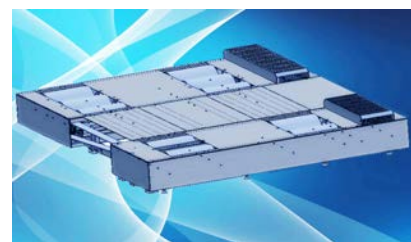
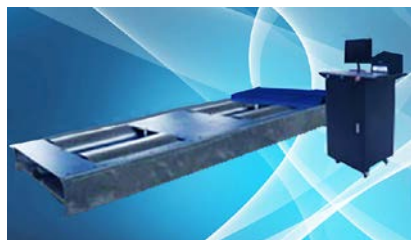


# C Chassis Dynamometer



## Model: G-Dyno Series

型号:G-Dyno 系列

G-Dyno, the state-of-art chassis dynamometer series, is designed to tuning a variety of vehicles including cars, sport compacts, light commercial vehicles, ATVs and so on.

With the air cooled eddy current power absorbing unit (or retarder) integrated, G-Dyno is able to track a quick load change rate by rapid load setting, richful control mode systems allows steady state and controllable acceleration rate operations.

The standard single PAU model, G-Dyno-1, is perfect for light vehicles including modified high performance cars. With model G-Dyno-2, which equipped with double PAUs and the wheelpower absorption capacity is doubled up to 1300hp, is ideal for modt powerful racing cars. The model G-Dyno/AW, with patented M-Link™, is suitable to test AWD cars while keep the front and rear wheels run synchronized.

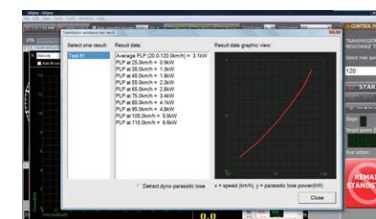
In addition to determining vehicle traction force, torque and/or power characteristics, G-Dyno can be employed as a number of other roles, such as transmission loss testing, speedometer testing, moise level testing and more.

## Features

- Larger diameter rollers  
Twin-roller mechanism with harden surface treatment, which allows car to stay on the rollers steady without damage to the tires.
- Low inertia of system  
It is one of key factor for precise tuning jobs. The road load situation of those cars with modified engines and chassis characteristics can be simulated accurately.
- Easy calibration  
Computer aided calibrating and compensating mechanism. Each G-Dyno calibrated at the factory before shipping and make precise measurement with almost no further calibration by the end users.
- Easy installation  
G-Dyno can be installed into a pit or above floor as well by enduser just follow the instruction easily.  
Anti-corrosion galvanized or powder spray frame structure.

## Software Highlights

- Richful user interface with easy-to-use functions. Real time data logging, curve analysis and 3D view make tuning and mapping much easier than ever.
- Supports both metrics and British unit systems. The dashboard views can be customized by users, with different shapes and values.
- Turn your Windows PC into a full testing lab. It is powerful, flexible and easy to use. It provides not only testing parameter controls but also analyzing tools to allow you to start/stop a load, display and trace real time data, compare key points and configurate hardware inputs.



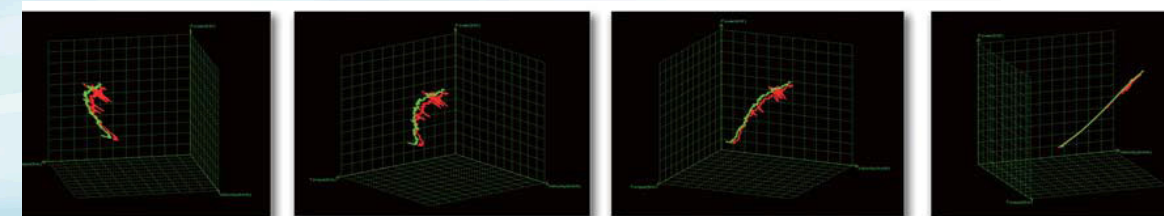
- Torque/power output can be viewed in real time curve display at steady or changing speeds, so that the changes you've made on a engine fuel/timing maps can be evaluated instantly to diagnose engine and drive train problems.
- Many testing modes available.

## Measurement Variables

- Graphic power curve.
- Wheel power or track force at various speeds or pedal positions.
- Transmission loss.
- Point to point comparison function.
- Projection of engine power in compliance with SAE J1394
- Speedometer test program
- Sound level of loaded engine and transmission
- Tires spin
- Intelligent calibration



## 3-D graphic function



Chassis Dynamometer

## Accessories

Optional accessories can be selected by customers, including those to monitor air/fuel ratios, engine temperatures, inlet air temperatures, etc. These accessories will enable dynamometer technicians to diagnose and analyze various engine functions and problems, and see if there are improvements can be made.

The technicians can adjust various settings such as the amount of fuel injected into the cylinder, the ignition timing, VVT trigger, boost levels, and then retest and make sure that the changes work.

Operator can select graphic or numeric form when comparing tuning effects with testing results.

<b>A001000</b> Data logger	8+ channel subsystem, user selectable RS-232 serial port — via G-Dyno™ software. Optional control inputs RPM, Lambda, emissions, temperature, vacuum, OBD-II, opacity, etc. Power supply: 220VAC 50Hz 1kW
<b>A001001</b> Weather station	Baro : 0-110 kPa, ±0.25% Humidity: 0-100%, ±3%RH Temperature: 0-50°C, ±0.5°C
<b>A001002</b> OBD-II rpm pick up	Support direct connection to most standard vehicle OBD-II interface Range: 200-20,000 rpm, ±10 rpm
<b>A001003</b> Battery rpm pick up	Battery type, real-time display Range: 400-9,999 rpm, ±2%
<b>A001004</b> Lambda module	Wide band exhaust gas A/F ratio module Accuracy: ±0.0005 (0.1 AFR)
<b>A001005</b> 5 gas analyzer	Five-gas analyzer (O2, CO, CO2, HC, and NO) via digital RS-232 link.
<b>A001006</b> Opacity meter	Diesel exhaust opacity meter with digital RS232C link Range: 0-100%
<b>A001007</b> Temperature monitor	Oil-temperature pick up with digital link Range: 0-200°C, ±1%
<b>A001008</b> Vacuum monitor	Vacuum value pickup with digital link Range: 40-90 kPa, ±1%
<b>B002001</b> Vehicle cooling fan	Air flow: 9300 m3/h @1450rpm Power supply: 380VAC 50Hz 0.75kW
<b>B002002</b> Power enhance kit	Double power enhancement package include 1X retarder and necessary peripheries



A001000



A001001



A001002



A001003



A001004



B002001



B002002

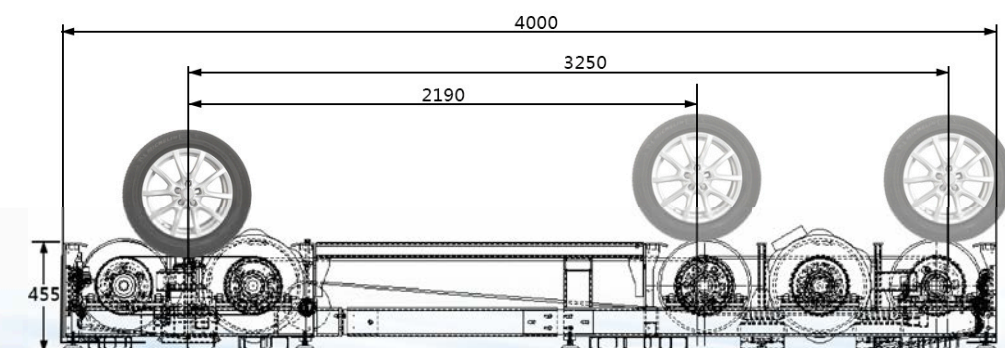
## Specifications

Item	G-Dyno-1	G-Dyno-2	G-Dyno/AW
Peak power absorb capacity	650 hp	1300 hp	650 hp (1300* hp)
Axle weight allowed	2,000 kg/axle		
Loading device	Air cooled eddy current PAU (retarder)		
Maximum speed	260 km/h stable 300 km/h transient	260 km/h stable 300 km/h transient	200 km/h stable 220 km/h transient
Controls	Close loop digital control with IGBT, G-Dyno™ application software		
Roller diameter	400 mm (15.75 inch)		
Track length range	1050/2250 mm		
Roller lifter and braking	Pneumatic lifting and brake system with air bags		
Wheel base adaptive	---		2190-3250 mm
Controller	Unitest™ system, Industrial embedded processor, 1G memory, 32G electronic disk, 19" color LCD, A4 laser printer, standard keyboard		
Control cabinet	19" cabinet with expended working platform, powder spray surface, moving foot rollers		
Roller bed installation	Above/below floor		
Synchronization of front and rear roll beds	---	---	M-Link™ mechanic synchronization
Power supply**	220VAC 20A single phase	220VAC 40A single phase	
Compress air supply	0.6-0.9 MPa (6 -9 bar)		
Dimension of cabinet	900X600X1050 mm		
Dimension of roll bed	400X1100X3500 mm	400X1800X3500 mm	Rear 400X1100X3500 mm Front 400X1900X3500 mm
Shipping weight (approx.)	1600 kg	1800 kg	3700 * kg

\* With optional kit of B002002  
 \*\* Other specification of power supply is available

### G-Dyno/AW arrangement

M-Link™ mechanism makes self-adaptive of wheel base, fit to test 2WD, 4WD and AWD cars very easy



Address, Building 1#, A207, A209-A220, NO.16, Lianhuachi West Road, Haidian, Beijing 100036 P.R.China

Website, www.orientco.cn E-mail, orientco@orientco.cn Tel, +86 10 88891930 88891932

地址: 北京市海淀区莲花池西路16号1号楼A207, A209-A220 电话: 010 88891930 88891932 传真: 010 88891645 邮政编码: 100036

网址: http://www.orientco.cn 电子邮箱: orientco@orientco.cn