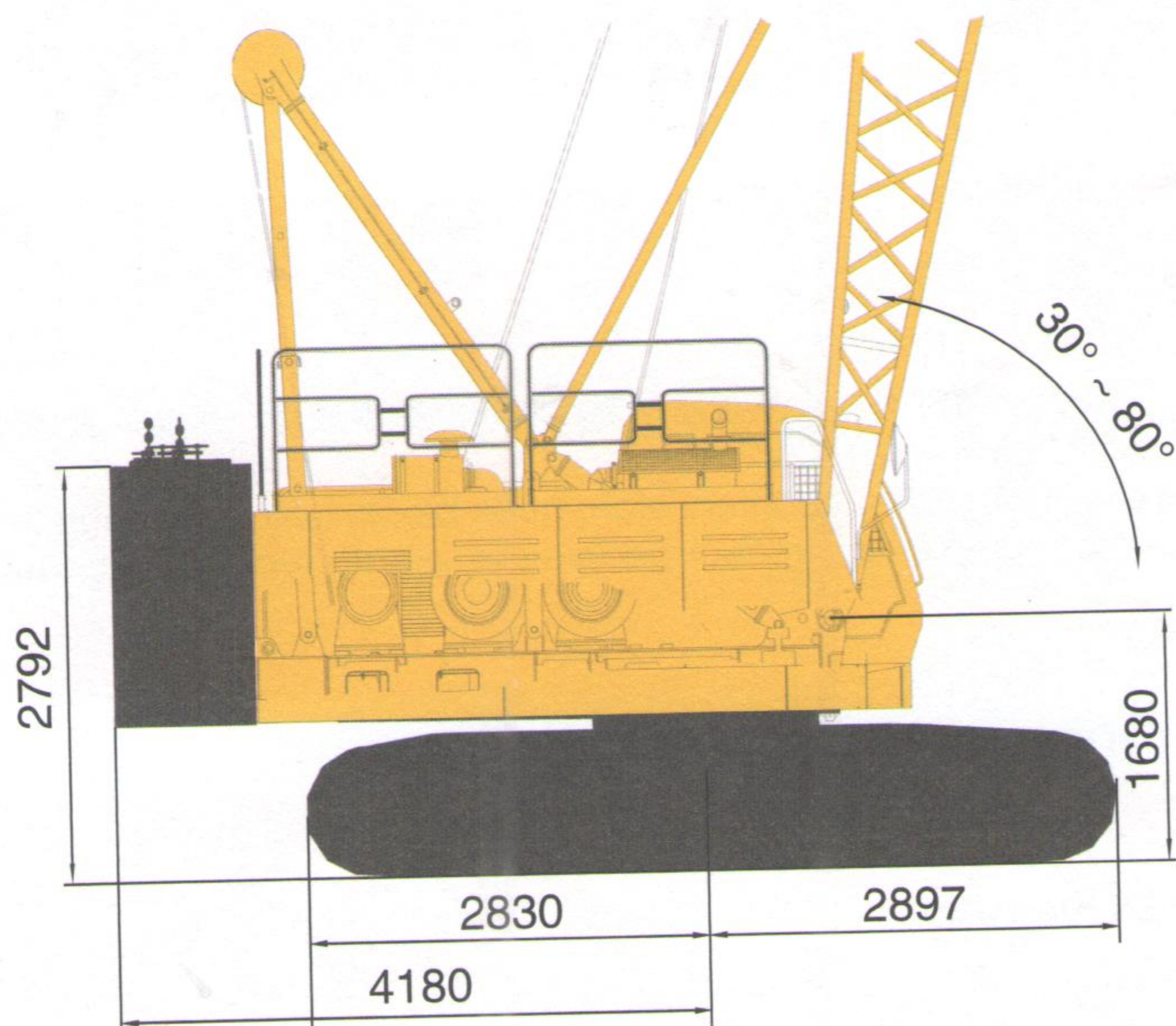




主要技术参数 The Main Technical Parameters

项目(Item)		单位(Unit)	数值(Value)
最大额定起重量 Max. rated lifting capacity	主臂工况 Boom working condition	t	55
	臂端单滑轮工况 Boom single pulley working condition	t	6
	固定副臂工况 (不带主钩) Fixed jib working condition (without main hook block)	t	11.4
	固定副臂工况 (带主钩) Fixed jib working condition (with main hook block)	t	10.4
最大起重力矩 Max. load moment		t · m	203.5
主臂长度 Boom length		m	13 ~ 52
主臂变幅角度 Boom luffing angle		°	-3 ~ 80
固定副臂长度 Fixed jib length		m	7 ~ 16
主臂与固定副臂夹角角度 Angle between boom and fixed jib		°	10、30
起升机构最大单绳速度 Hoist winch max. single line speed		m/min	125
主臂变幅机构最大单绳速度 Boom luffing winch max. single line speed		m/min	87
最大回转速度 Max. slewing speed		rpm	2.45
最高行驶速度 Max. travelling speed		km/h	1.37
整机质量(基于13m基本臂,55t起重钩) Total vehicle mass (55t hook block, 13m boom)		t	46.3
平均接地比压 Mean ground pressure		MPa	0.06
爬坡度 Grade-ability		-	30%
运输状态单件最大质量 Max. mass of single unit in transport state		t	28.6
运输状态单件(转台)最大尺寸 (长×宽×高) Max. dimension of single unit in transport state (L × W × H)		m	12.04 × 3.45 × 3.36



A向 (拆去主起重臂、人字架、变幅滑轮组等)
A direction (main lifting boom, A-frame and luffing pulley block are removed away)

