

HD MATRIX SWITCH 8x8

USER MANUAL

Contents

1. Product description	
2. Features	
3. Product specification	
4. Panel introduction.....	
5. Operation	
6. PC Controller User's Guider	
7. Packaging contents	

Product description

8x8 HDMI matrix switch connect 8 HDMI input to 8 HDMI display output. Each road supports resolution up to 4K and 3D, smart EDID controller. Special for Blue-DVD, Set-top, Home Theater and Game etc. You can control by IR remote, RS232, TCP/IP or panel switch.

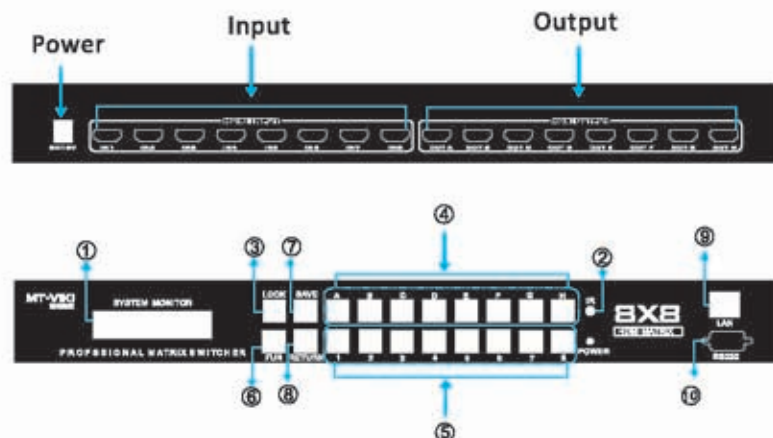
Features

- Support HDMI1.4: 4k x 2k @ 30 Hz, 1080p @ 120 Hz, 1080p 3D @60Hz
- Support deep-color 48/36/30/24 bit
- Support LPCM 7.1 channel, Dolby HD, Dolby Digital Plus and DTS-HD master Audio
- Support multi- screen display.
- Support any HDMI source input to any HDMI display output
- The EDID of 8 input can choose intelligently the best EDID by software
- Support RS232, IR remote, Panel switch and TCP/IP control
- LCD screen show the state

Specification

Bandwidth	297 MHz
Video resolution	480i, 576i, 576p, 720p, 1080i, 1080p@24/30/50/60Hz, 4K@30Hz, 1080 3D@60Hz
Input	8x HDMI, 1x RS232, 1x RJ-45
Output	8x HDMI
ESD protect	Human Body Model
Air discharge	±8 kV
Touch discharge	±4 kV
Power adapter	DC 12V/3A(US/EU, CE/FCC/UL certification)
Dimension	44*20*4.5 cm
Weight	2.31kg
Housing	Metal
Color	Black
Operation temp	0°C ~ 40°C/ 32°F ~104°F
Storage temp	-20°C ~ 60°C/ 04°F ~140°F
Humidity	20~90 RH(NON- condensing)
Power consumption	23 w(max)/0.5w (standby)

Panel description



2

1) LCD display, show the situation of inout and output

Default display main window	Output: ABCDEFGH, input: 12345678
Input Selected Port	Input ---> Output, ??---> A
Input selected window(output to all port)	To all, ?? ---> All
Mirrored output selected window	N to N, 1--> A.....8--> H
Save preset connection status window	Save Status, No: ??
Recall preset connection status window	Return Status, No: ??

2) IR Receiver:

- Receive IR signals from the Remote Control of 8 × 8

3) LOCK:

- Lock panel buttons or the Enter key, press the key is to confirm and return to the main window, when this member is pressed to lock or unlock the panel keys when comes to the main window. After the panel key lock, press LOCK key and other keys will be out of function and hint "keyboard locked!", now Press the LOCK key to return to the main window, in the main window, press LOCK key again, unlock the panel switch

4) HDMI output select keypad

- HDMI output select button A ~ H: Press to select the output from the A to H. A press as the LCD displays the following:

Input select window	Input--> Output ?? --> A
---------------------	-----------------------------

5) HDMI input select button keypad

- HDMI input select buttons 1 to 8: Press 1 to 8 to select input. Press 1-8 input keys in the input select window, that is the input source and corresponding output underway and return to the main window.

3

6) FUN key

● Pressed this button, selecting from all simultaneously outputs and mirroring output function.

① When pressed FUN button first time is all signal output simultaneously, enter the input select window as follows:

Input select window	TO ALL
	?? → ALL

(Note: select the input buttons 1 to 8, means the input source signal is send to all the output display)

② When second time pressed FUN button is for mirror output and shows as follows:

Mirror Output	N TO N
	1-->A...8-->H?

(Note: Press the LOCK button to confirm the output, the corresponding 1 to 8 input will be output from A-H ports, namely 1 → A, 2 → B, 3 → C ... 8 → H)

7) SAVE key

● To save the current connection status to 8 group preset memory space, press the button and shows as follows

Save Preset Connection Status	Save Status
	No:??

Note: select the input buttons 1 to 8, will recall the current state of the input and output to this memory space, and return to the main window)

8) RETURN key

● Recall 8 group input and output connections status saved in presets storage space, press this key and shows as follows

Recall the preset connection status	Return Status
	No:??

(Note: Enter the number buttons: 1-8, you can RECALL the input and output connection state of the memory space and return to the main window)

9) network control interface

10) RS232 Interface

1. Select the input and output channels

1) Single input and output switch

A. press A ~ H button to select the output channel, then press the 1-8 keys to select input source, ex. pressing the "B", then press "5", that is, select HDMI input 5 channel and output to the port B

2) Single input to all output switch

Press FUN button until switched to following display window

Single input to all output switching	TO ALL
	?? → ALL

(Note: press 1-8 button to select the input source, ex. press 2, that is, the input signal 2 is switched to all output port)

3) Mirror output switch

C. Press the FUN button until switch to the following display window

Mirror output switch	N TO N
	1-->A...8-->H?

(Note: Press the LOCK button, then confirm the running of the mirror output, connection state is switching to 1 → A, 2 → B, ... 8 → H mirroring output in sequence)

2. Save the current connection status to the preset memory space

Press the SAVE button, then press the number button 1 to 8, the current connection state is saved to the corresponding memory space. If you press SAVE key, then press 2, the current state of the Input and output is saved to No. 2 memory space as the preset values, for RETURN button to quickly EXIT.

3. Recall the Input and output connection state of preset memory

Press RETURN, then press the No. keys 1 to 8, then quickly recall input and output connections state pre-set in corresponding memory space. If you press the RETURN key, then press 2, RECALL input and output state on No. 2 memory space, and setting matrix according to this connection status.

4. Lock / unlock the panel buttons

In the main window, press the LOCK button to lock or unlock the panel keypad. In the non-primary window, press the LOCK button to return to the main window. When panel buttons in the unlocked state and the LCD display interface is main window, press the LOCK key, the panel keypad locked, pressing all the button except LOCK button are invalid, while LCD will shows "Keyboard locked!", In panel key locked state, and the LCD display is the main window, press the LOCK key, unlock the panel buttons, all panel key to reactivated.

5. Remote Operation:

Put the remote control towards to the remote control receiver on the front panel.

PC Controller User's Guide

1. Install

Matrix Controller is a green software. Simply copy the software to your computer to complete the installation, the computer via RS232 COM or TCP / IP to control matrix

2. Step

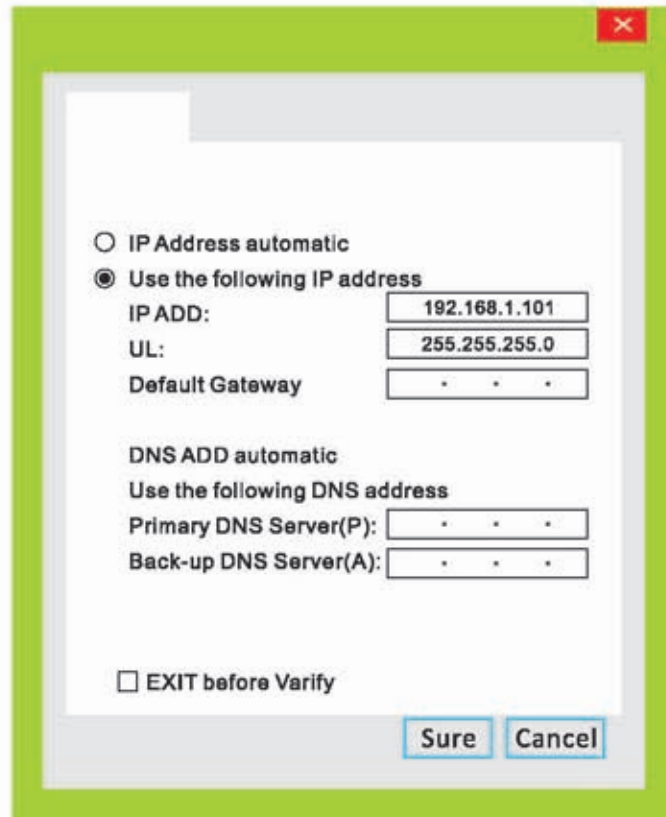
- ① With RS232 cable or TCP / IP LAN connect to computers and matrix switch
- ② Open the Matrix Switcher power
- ③ Double-click the icon to run MATRIXCONTROLLER.EXE

How to control matrix

1. "GENERAL" page



1. Select the matrix switch control of communication, select SERIAL CONTROL as serial protocol control, select NETWORK CONTROL as a network control protocol
2. Serial control connection: select the RS232 port connected to the host matrix, click CONNECT, and open the serial port and link the matrix, once the matrix connection is ok, the MATRIX CONTROL page will show the current state of the matrix input and output connection
3. Network control connection:
 - Set up your computer Ethernet port IP address to a static IP, IP address to 192.168.1.xxx, xxx is other than the value between 2-254 in addition to 10, shows as the following



- Click Network control section "CONNECT" button, the button changes to "Connecting ...". Please wait a few seconds, if the connection is successful, the dark red indicator next to the button turns green, and the input and output state matrix MATRIX matrix page will host synchronization. If you can not connect prompt, check the network cable connection matrix is connected properly, IP address of the computer's Ethernet port is set correctly

2. Matrix control page

<p>① Each output port name and box When this check box, click below the button a fourth area, the port connection status of the synchronization can be controlled, it is not checked against the fourth region button control</p>	<p>④ Multi-port synchronous control box When this check box, click the check box below the button, all changes will be synchronized output port, if you click 2, the input source select all output ports for input 2, . If only 8 Check the output ports of the output port where several check boxes next to the name, click on the number keys in the region will only have to change the input and output port status checked. For example, check the OUTPUT A, B, G, H, click below the fourth key area of only changing the input source OUTPUT A, B, G, H's</p>
<p>② Input source selection status indication, the output port on the host matrix indicates the currently selected input source</p>	
<p>③ Input source selection button, click on the appropriate digital input source to the output port of the switch to the corresponding digital input sources, such as a click 1, then the output port to the input source selected as the input 1</p>	

⑤ The default connection state storage and call control buttons

1. Press the SAVE button, and then press the number keys 1-8, then the current connection state is saved to the corresponding digital storage space. If you press SAVE key, then press 2, then the current state of the input and output to save storage space as the No. 2 preset value

2. Press the RETURN key, then press the number keys 1-8, then the corresponding memory preset digital input and output connections quickly bring state. If you press the RETURN key, then press 2, then No. 2 in the storage input and output state out of tune, and connection status matrix Click Settings

⑥ Mirrored Output control buttons

Click on the button, the connection state is switched 1 to the corresponding A, 2 according to the corresponding B, 8 to H corresponding to the output image in sequence



Packaging Contents

- 1x 8x8 HDMI matrix switch
- 1x DC 12V /3A power adapter
- 1x user manual
- 1x IR remote controller
- 1x RS232 cable
- 2x Mounting Kit