

Features :

- The weight is light
- Superior performance
- Good appearance designs
- Outdoor antenna for public hotspots
- Installed for collinear vertical polarization

Applications :

- IEEE 802.11b, 802.11g, 802.11n wireless lan
- Omni directional multipoint applications
- Bluetooth, point to multipoint
- Public wireless hotspot
- WiFi, RFID
- Wireless video systems

Item No.	M5861400-M5861403	M5861410-M5861413
Frequency range	2.4~2.5GHz	2.4~2.483GHz
V.S.W.R.	≤ 2.0:1	≤ 1.5:1
Return loss	≥ -10db	≥ -14db
Maximum power	50W	
Impedance	50 Ω	
Antenna type	Collinear	
Polarization	Vertical	
Wind survival	N/A	150MPH
Clamps	N/A	U-bolt
Connector	R/P SMA male	N female
Radome material	Black ABS	White fiberglass

M5861400
2.4GHz 3dBi Dipole antenna
Horizontal beam-with:360°
10ø x 108 mm



M5861410
2.4GHz 8dBi OMNI antenna
Vertical beam-with:15°
Horizontal beam-with:360°
Mounting:32-45 mm
35ø x 390 mm



M5861402
2.4GHz 7dBi Dipole antenna
Vertical beam-with:20°
Horizontal beam-with:360°
13ø x 294 mm



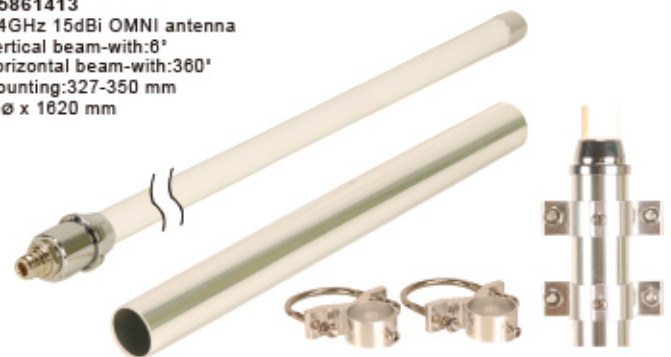
M5861412
2.4GHz 12dBi OMNI antenna
Vertical beam-with:7°
Horizontal beam-with:360°
Mounting:94-120 mm
35ø x 1420 mm



M5861403
2.4GHz 9dBi Dipole antenna
Vertical beam-with:15°
Horizontal beam-with:360°
13ø x 394 mm



M5861413
2.4GHz 15dBi OMNI antenna
Vertical beam-with:6°
Horizontal beam-with:360°
Mounting:327-350 mm
51ø x 1620 mm



M5861409
Dipole antenna base 1.5M
R/P SMA male to R/P SMA female



M5861419
OMNI antenna base 1M
R/P SMA male to N male



Features :

- The weight is light
- Superior performance
- Heavy duty mounting
- Good appearance designs
- Outdoor antenna for public hotspots

Applications :

- IEEE 802.11b, 802.11g, 802.11n wireless lan (M5861432 - M5861435)
- IEEE 802.11a applications (M5861440 - M5861445)
- Public wireless hotspot
- WiFi
- Wireless video systems

Item No.	M5861432-M5861435	M5861440	M5861443	M5861445
Frequency range	2.4~2.483GHz	5.2~5.3GHz	5.425~5.575 GHz	5.725~5.85 GHz
V.S.W.R.	≤ 1.5			
Return loss	≥ -14db			
Maximum power	50W			
Impedance	50Ω			
Antenna type	PCB patch			
Polarization	Vertical or Horizontal			
Wind survival	>150MPH			
Clamps	Multiple options			
Mounting	Multiple options			
Connector	N female			
Radome material	ABS + UV resistance			

M5861432
2.4GHz 12dBi Panel II antenna
Vertical beam-with:28°
Horizontal beam-with:85°
241 x 90 x 30 mm



M5861440
5.3GHz 18dBi Panel antenna
Vertical beam-with:16°
Horizontal beam-with:16°
190 x 190 x 46 mm



M5861433
2.4GHz 14dBi Panel antenna
Vertical beam-with:20°
Horizontal beam-with:20°
239 x 239 x 30 mm



M5861443
5.5GHz 16dBi Panel antenna
Vertical beam-with:16°
Horizontal beam-with:16°
190 x 190 x 46 mm



M5861435
2.4GHz 20dBi Panel antenna
Vertical beam-with:16°
Horizontal beam-with:15°
351 x 396 x 35 mm



M5861445
5.8GHz 16dBi Panel antenna
Vertical beam-with:16°
Horizontal beam-with:16°
190 x 190 x 46 mm



Panel mounting kit
(for M5861433 - M5861445)

Accessories :

- x 4PCS
- x 4PCS
- x 4PCS
- x 4PCS
- x 2PCS
- x 2PCS
- x 4PCS
- x 4PCS
- x 4PCS

