

特点和用途：

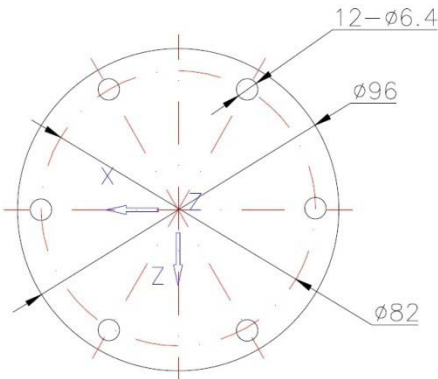
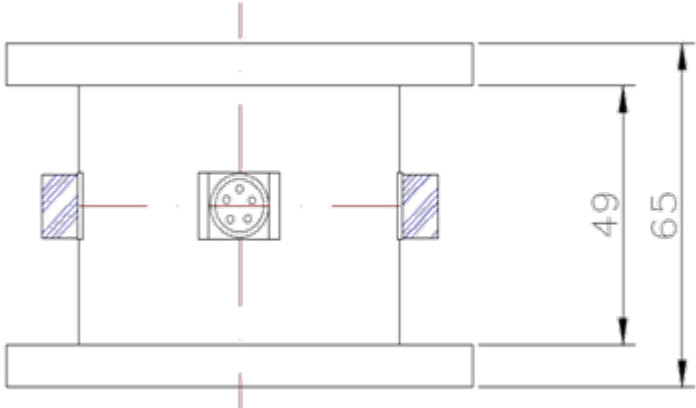
不锈钢材料，体积小结构紧凑。可以同时检测X,Y,Z三个方向的力，三轴力互相之间的影响小。
应用：铣床磨床加工过程中刀具三个方向受力分析检测，机器人抛光三轴力的检测。外形尺寸根据量程要求而不同。

Features and Applications:

- Small size and stainless steel material;
- Able to measure the force from three dimensions at the same time, and the mutual interference among three dimensions is very small;
- Mainly used for force measurement analysis of tools from three dimensions during the process of milling or grinding machine, and the three-axis force measurement of robotic polishing;
- The size and shape can be different based on the different capacity requirement.

Capacity: X: 20/30/50/100/150/200/300/500KG
Y: 20/30/50/100/150/200/300/500KG
Z: 30/50/100/200/300/500/1000KG

The mutual interference among three dimensions is smaller than 5%.



规格参数 Specification			
输出灵敏度 Rated Output	0.5~1.0 ± 10% mV / V	输出电阻 Output Impedance	350 ± 3 Ω
零点输出 Zero Balance	± 2 % F.S.	绝缘电阻 Insulation	≥5000MΩ/100VDC
非线性 Non-linearity	0.5 % F.S	使用电压 Recommended Excitation	5~10V
滞后 Hysteresis	0.5 % F.S	最大使用电压 Maximum Excitation	15V
重复性 Repeatability	0.5 % F.S	温度补偿范围 Compensated Temp Range	- 10 ~ 60 °Ce
蠕变（30分钟） Creep (30min)	0.1 % F.S	工作温度范围 Operation Temp Range	- 20 ~ 80 °C
温度灵敏度漂移 Temp Effect on Output	0.05 % F.S. / 10°C	安全超载 Safe Overload	120%
零点温度漂移 Temp Effect on Zero	0.05 % F.S. / 10°C	极限超载 Ultimate Overload	150%
输入电阻 Input Impedance	385 ± 10 Ω	电气连接 Connection	5 pin
电缆线连接方式 Wire Connection	Ex + : Pin1 Ex - : Pin 2; Output +: Pin 3 Output -: Pin 5 输入+: 红 输入- 黑 ; 输出+: 绿 输出- 白		