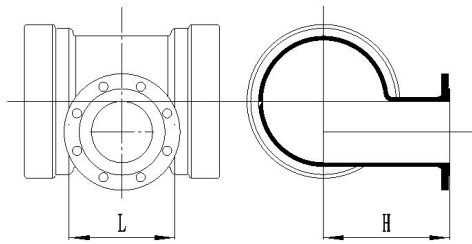


All Sockets Tee with 45° Angle Branch

(T Fittings)



MATERIAL:

1) Body:

Ductile iron grade 500-7/ 450-12 in accordance with ISO1083

2) Gasket:

Rubber E.P.D.M. in accordance with EN 681.1

TECHNICAL DATA:

1) Working Pressure: PN10, PN16, PN25, PN40

2) Fluid Temperature: 0°C-50°C, excluding frost.

3) Dimensions and testing in accordance with ISO 2531/EN 545.

SURFACE TREATMENT:

External Coatings :

- 1) Zinc coating + bitumen painting
- 2) Liquid epoxy painting
- 3) Epoxy applied by FBE
- 4) According to customers' requirements.

Internal Coatings:

- 1) Cement mortar lining
- 2) Liquid epoxy painting
- 3) Epoxy applied by FBE
- 4) According to customers' requirements.

NOTE:

1) Push-in joint can be assembled by pushing the spigot through the gasket in the socket of the mating component, and permits significant angular deflexion both during and after installation and which can accept a light offset of the centreline.

DIMENSION LIST (MM)

DN	dn	L	H	Mass (kg)			Standard	Pattern
				PN10	PN16	PN25		
200	80	245	250	39.50	39.50	39.50		
250	80	250	275	49.50	49.50	49.50		
300	80	255	300	62.00	62.00	62.00		
300	150	260	310	68.50	68.50	69.50		Y
350	100	280	325	83.00	83.00	83.50		
400	100	280	350	97.50	97.50	98.00		
450	100	285	375	115.00	115.00	116.00		
500	100	290	400	134.00	134.00	134.00		
600	100	295	450	173.00	173.00	173.00		
700	150	360	500	296.00	296.00			
800	150	365	550	360.00	360.00			

DIMENSION LIST (MM)								
DN	dn	L	H	Mass (kg)			Standard	Pattern
				PN10	PN16	PN25		
900	150	370	600	467.00	467.00			
1000	200	435	650	569.20	569.00			
1100	200	440	700	725.20	725.00			
1200	200	445	750	840.20	840.00			
1400	200	460	850					
1500	200	465	900					
1600	400	700	950					
1800	400	715	1050					
2000	400	725	1150					
2100	400	730	1200					
2200	400	735	1250					
2400	400	750	1350					
2600	400	760	1450					