

# GW□-12/24/40.5 Outdoor HV Disconnect Switch

## Summary

GW□-12/24/40.5-630-20(25) outdoor AC high voltage disconnect switch (disconnect switch for short) is used to open and close circuit with voltage but no-load 50/60Hz, 12/24/40.5kV power system, The anti-pollution type can be used in the serious pollution area. Three pole linkage, good synchronous performance. It accords with standards of IEC62271-103: High voltage switches.

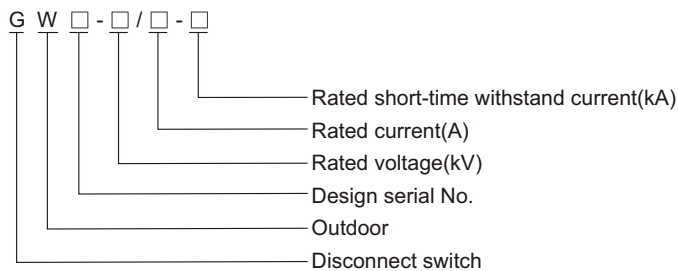


## Ambient condition

1. Altitude: ≤3000m ;
2. Ambient temperature: -30°C~+40°C;
3. Wind speed: ≤35m/s;
4. Air pollution: IV;
5. Earthquake intensity: ≤8 degree;
6. Ice thickness: ≤10mm.



## Model



## Technical specification

No.	Item	Unit	Data			
1	Rated voltage	kV	12,24,40.5			
2	Rated current	A	630, 1000, 1250			
3	Rated power frequency	Hz	50/60			
4	Rated peak withstand current	kA	50, 63			
5	Rated short-time withstand current	kA	20, 25			
6	Rated short-time withstand current duration	s	4			
7	Main loop resistance	μΩ	12kV≤80	24kV≤90	40.5kV≤100	
8	1min(dry) power frequency withstand voltage	phase to phase phase to earth across open contacts	kV	42/48	50/60	95/115
9	1min(wet) power frequency withstand voltage			34	50	85
10	lightning impulse withstand voltage (peak)			75/85	125/145	185/215
11	Mechanical life	Times	2000			

## Structure feature

This disconnect switch consists of frame, operating insulating, static contactor, blade, linkage spring mechanism, etc.

Frame: 5mm thickness bended armor plate, there are holes on the frame to fixed post insulator.

Post and operating insulator: adopt ZS-12, 40.5 series outdoor clubbed post insulator, The mini resist bend load is 4000N.

Static contactor: it is made of violet copperplate and fixed on post insulator.

Blade: it is made of rectangular violet copperplate, there is an press-spring to adjust press.

The switch vertical or horizontal installed in outdoor with CS□ mechanism.

Model	Outline dimension(mm)				
	B	C	D	E	F
GW□-12/630-20	400	1000	1200	565	510
GW□-24/630-20	375	395	1155	695	650
GW□-40.5/630-20	500	1250	1450	815	728

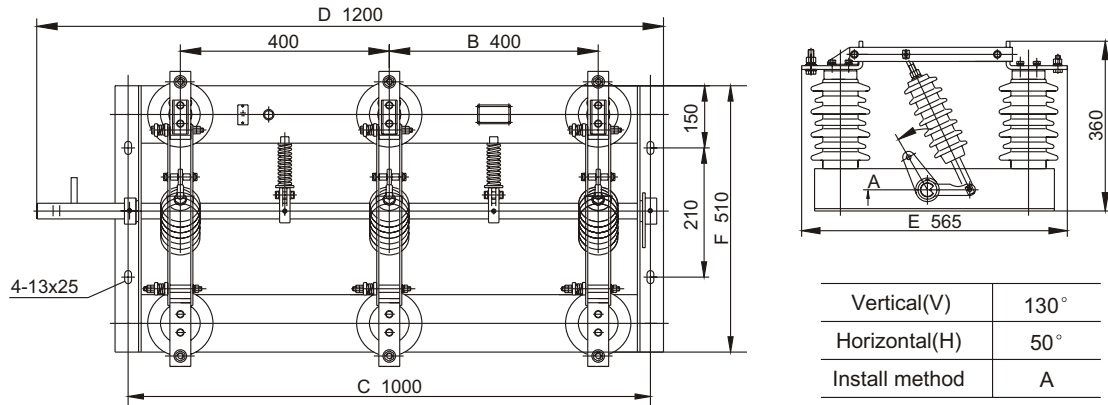


Fig.1 Outline dimension

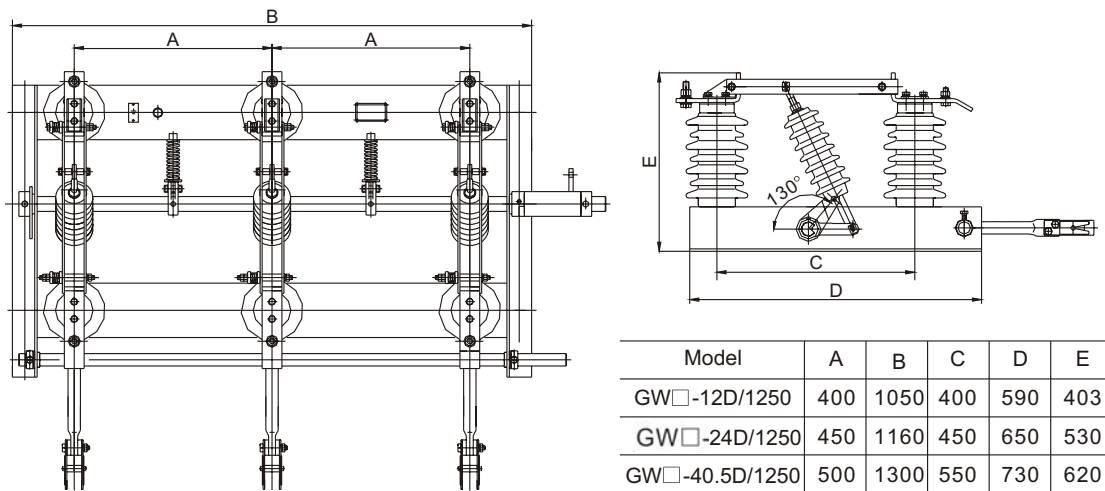
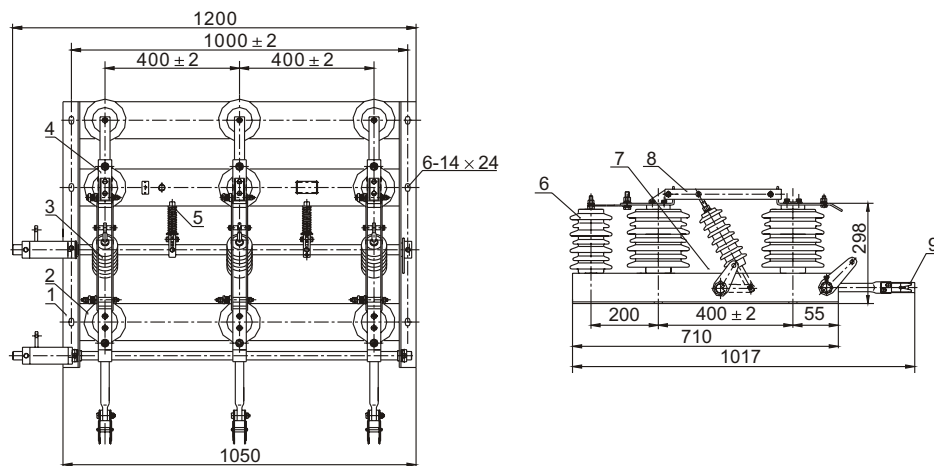


Fig.2 With earthing blade



- 1.Base frame 2.Post insulator 3.Pull insulator 4.Contacts 5.Spring  
6.Lightning arrester 7.Rotating shaft turning arm 8.Contact blade 9.Earthing blade

Fig.3 With earthing blade & lightning arrester