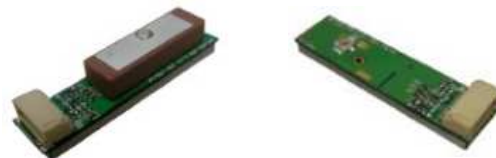


GM-635, Slim, Easy to Use

GPS Smart Antenna Module

RoHS
Compliant



Overview

GM-635 is equipped with -161dBm engine and measures just 35x8x6.5 (mm). The slim design allows it to be used in thickness demanding devices. The built-in USB interface makes it very easy to integrate with modern USB-rich devices such as notebook PC etc. The UART option allows it to be integrated in traditional GPS applications.

Our experienced design provides not only fast acquisitions and excellent tracking performance but also quality and delivery assurance.

Applications

- Notebook PC / Netbook, Tablet PC
- Smart phone, MID, UMPC, PND
- Digital camera
- Personal/pet tracker

Features

- Slim: 35 (L) x 8 (W) x 6.5 (H) (mm)
- USB or UART interface
- Built-in or external antenna
- External active/passive antenna option
- Module ON/OFF control for power saving
- Backup power pin for fast position fix
- Easy to use 6-pin connector
- High performance: -161dBm tracking sensitivity⁺
- A-GPS support
- Windows **location sensor** support
- Excellent EMI protection

Technical Specifications

Receiver Performance Data⁺

Receiver Type	50-channel, L1 frequency, C/A code
Horizontal Position Accuracy	< 2.5m (Autonomous) < 2.0m (WAAS) (CEP,50%,24-hour static, -130dBm)
Velocity Accuracy	<0.1 m/s (speed) <0.5° (heading) (50% @ 30 m/s)
Time To First Fix	Autonomous (All at -130dBm)
Hot start	1sec
Warm start	27sec
Cold start	27sec
Sensitivity (Autonomous)	-147dBm (acquisition) -161dBm (tracking & navigation)
Max. Update Rate	5Hz
Max. Altitude	< 50,000 m
Max. Velocity	< 1,852 km/hr
Protocol Support	NMEA 0183 v2.3 UART: 38400bps N,8,1; GGA, GLL, GSA, GSV, RMC, VTG, TXT
SBAS Support	WAAS, EGNOS, MSAS
Dynamics	< 4g

⁺ Note. According to IC Spec

Electrical Data

Power Supply	3.3 ~ 5.5 V (TTL); 4.75~5.25V (USB)
Power Consumption	56 mA / average tracking
Backup power	1.5 ~ 3.5 V

Navisys Technology Corp.

Tel : +886-3-5632598

Sales contact: sales@navisys.com.tw

Address: 2F, No.56, Park Ave. II, Science-Based Industrial Park, Hsinchu 300, Taiwan (R.O.C.)

<http://www.navisys.com.tw/>

Fax: +886-3-5632597

Technical support: service@navisys.com.tw

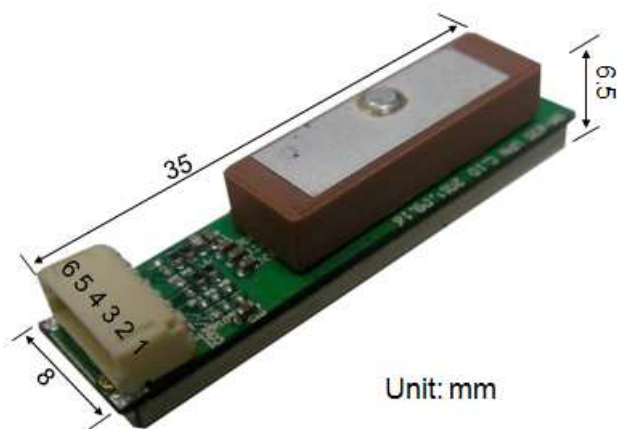
TTL I/O	V_{IH} : 2.31~3.3V, V_{IL} : 0~0.66V V_{OH} : >2.8V, V_{OL} < 0.4V
USB I/O	V_{IH} : 2.0~3.3V, V_{IL} : 0~0.8V V_{OH} : >2.8V, V_{OL} < 0.3V
Protocols	NMEA, u-blox Binary

5	V_BAT	Backup power (1.5 ~ 3.5V)	Input
6	PWR_CTRL	Module power control High or disconnected: power ON Low: power OFF	Input

Environmental Data

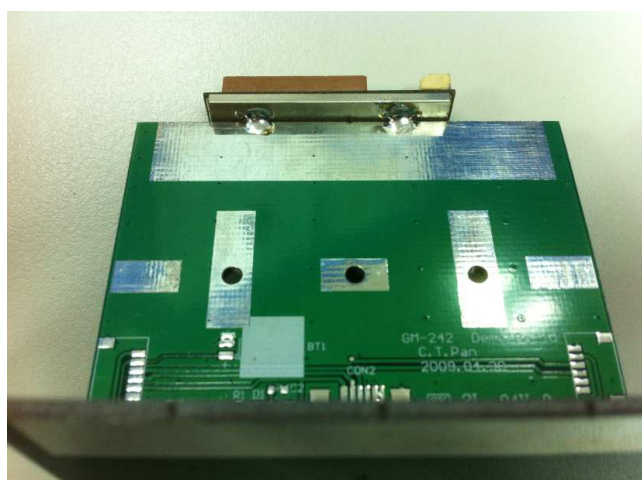
Operating temperature	-40 ~ 85°C
Storage temperature	-40 ~ 85°C

Mechanical Data – 35 x 8 x 6.5 (mm)



Handheld Device Application

1. Large ground plane below GM-635 boots its performance. As shown in following picture, GM-635 mounts on top of EVB and the shielding case of GM-635 is soldered to the ground plane of EVB. GM-635 should face up to the sky.



6-pin Interface (USB), pitch 1.0mm

Pin	Name	Function	I/O
1	GND	Ground	Input
2	VCC	Power supply, 4.75 ~ 5.25 V	Input
3	DP	USB positive	I/O
4	DM	USB negative	I/O
5	V_BAT	Backup power (1.5 ~ 3.5V)	Input
6	PWR_CTRL	Module power control High or disconnected: power ON Low: power OFF	Input

2. Typically, there is a big ground plane inside main board PCB or LCM. In this case, place the GM-635 body on top side of the PCB or LCM and solder GM-635 shielding case to the PCB or LCM for better antenna performance.
3. Connect 6-pin interface to main board.
4. To save power, turn off the GPS module via pin 6.

TTL UART

Pin	Name	Function	I/O
1	GND	Ground	Input
2	VCC	3.3 ~ 5.5 V power supply	Input
3	TXA	Port A serial data output (from GPS)	Output
4	RXA	Port A serial data input (to GPS)	Input

Ordering Information

GM-635X#

U	USB interface, patch antenna GGA, GLL, GSA, GSV, RMC, VTG, TXT @1Hz
T	UART interface, 9600bps, N-8-1, patch antenna GGA, GLL, GSA, GSV, RMC, VTG, TXT @1Hz

Related customizations

Navisys Technology Corp.

Tel : +886-3-5632598

Sales contact: sales@navisys.com.tw

Address: 2F, No.56, Park Ave. II, Science-Based Industrial Park, Hsinchu 300, Taiwan (R.O.C.)

<http://www.navisys.com.tw/>

Fax: +886-3-5632597

Technical support: service@navisys.com.tw

Feature \ Model	I	J	K	L	T	U
RF Connector	I-PEX	I-PEX	I-PEX	I-PEX	-	-
For Antenna of	Passive	Active	Passive	Active	-	-
USB	-	-	Y	Y	-	Y
TTL	Y	Y	-	-	Y	-
Patch Antenna	-	-	-	-	Y	Y

*This document is subject to change without notice.