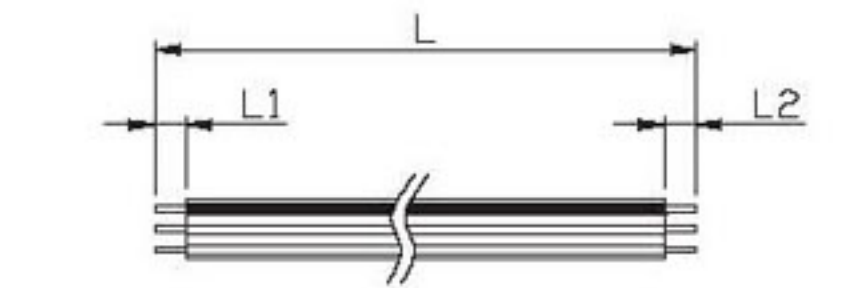
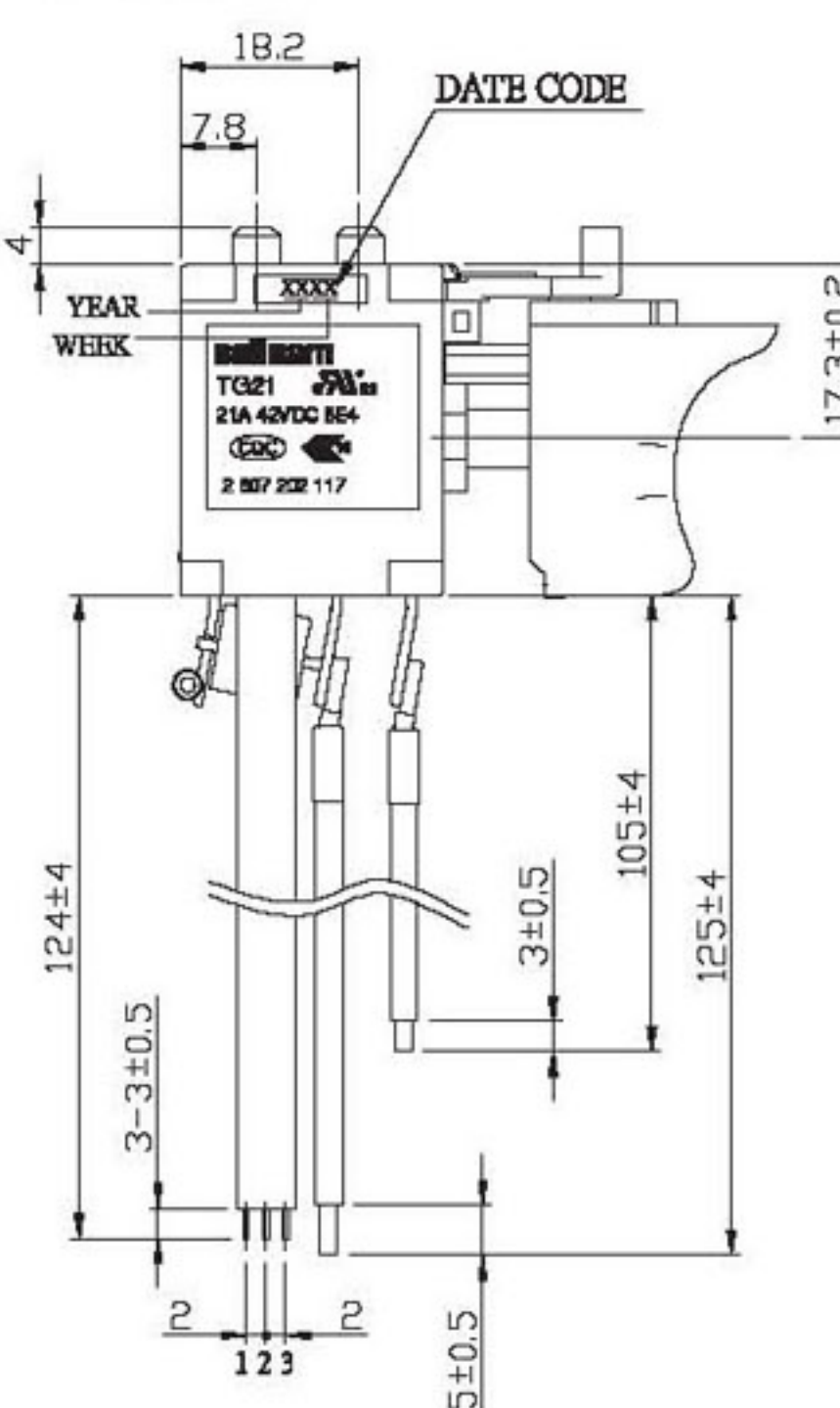
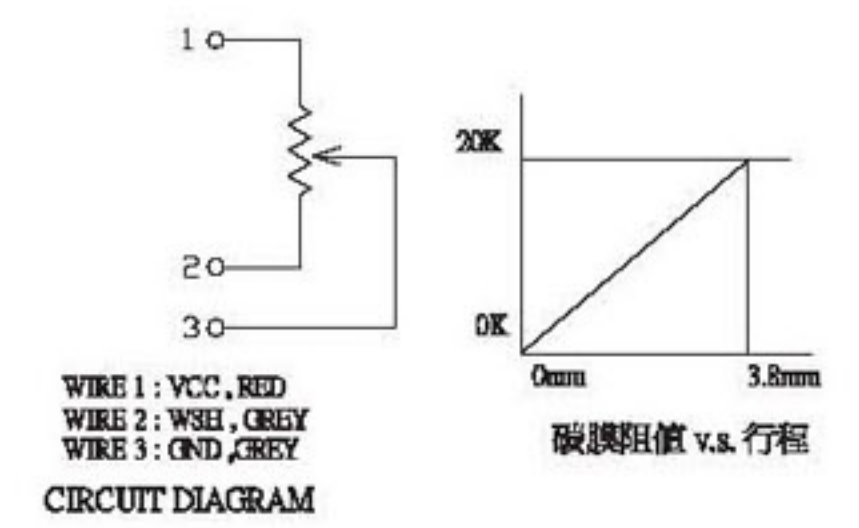
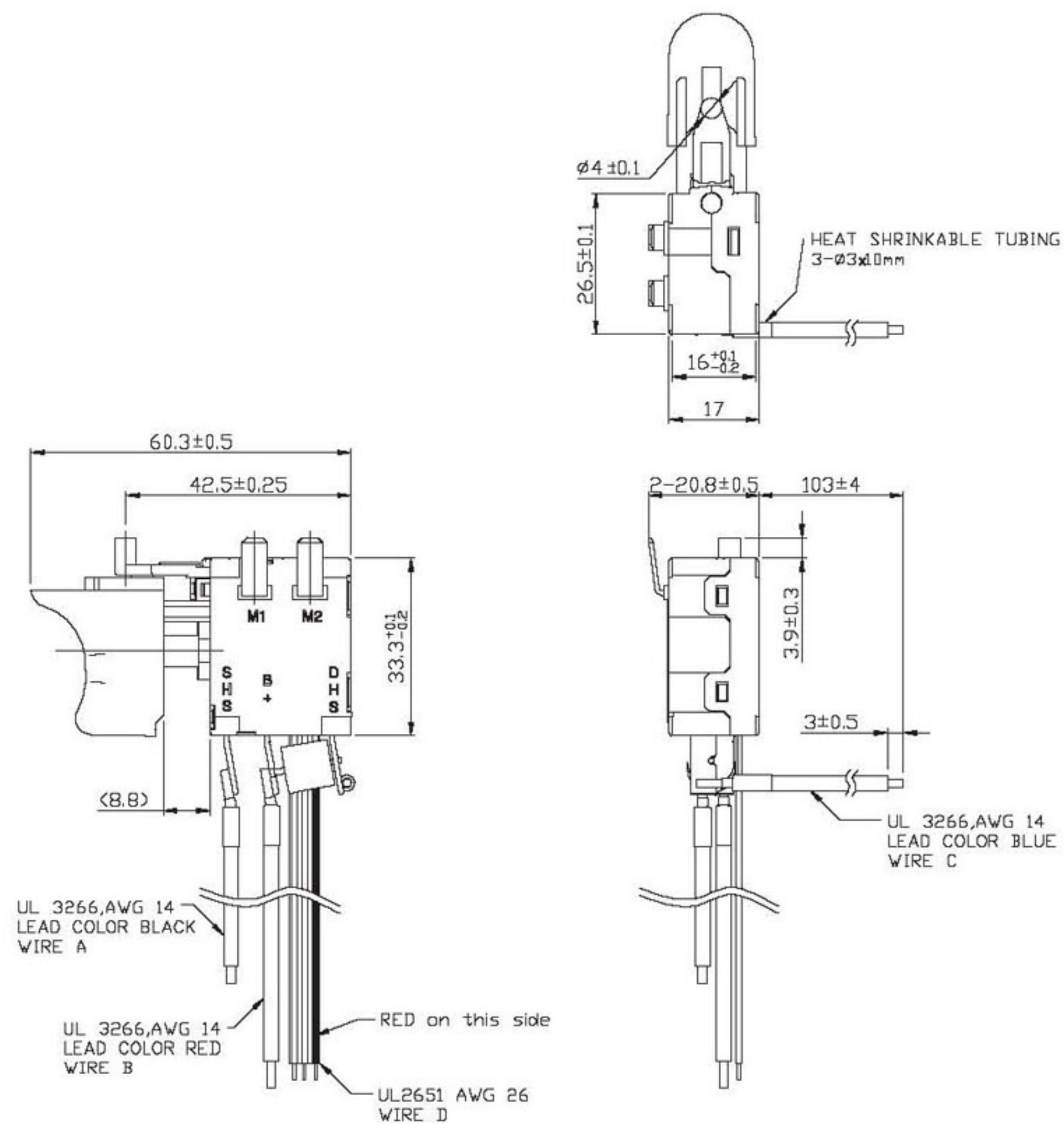
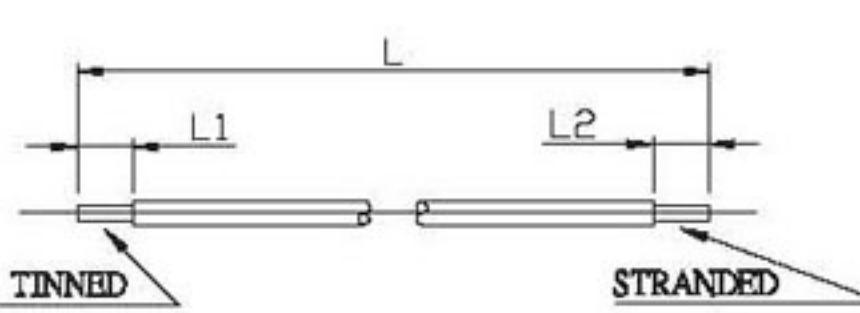


- ▶ Rating : 21A, 42VDC
- ▶ Initial contact resistance : 5mΩ
- ▶ Terminal to terminal dielectric  
Withstand voltage : 500VAC-1 minute
- ▶ Terminal to enclosure dielectric  
Withstand voltage : 500VAC-1 minute
- ▶ Insulation resistance : 500mΩ
- ▶ Life cycles : 100,000 cycles

Dimensions in mm



WIRE	WIRE LENGTH	L	L1	L2	COLOR
WIRE D		128±2	3±0.5	4±0.5	



WIRE	WIRE LENGTH	L	L1	L2	COLOR
A WIRE		100±1.5	3±0.5	10±0.5	BLACK
B WIRE		120±1.5	5±0.5	10±0.5	RED
C WIRE		104±1.5	3±0.5	10±0.5	BLUE