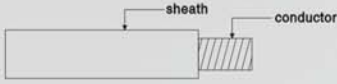


**PACKAGING:**



**COLOR REFERENCE CARD:**



 <b>7 unit structure</b>				
Model	AWG/square	Sheath	Diameter	Conductor
HX-PW001A	0/1AWG/50mm <sup>2</sup>	PVC	15mm	COPPER
HX-PW001B	2AWG/35mm <sup>2</sup>	FLEXIBLE PVC	12mm	TIN COPPER
HX-PW001C	4AWG/25mm <sup>2</sup>		10mm	CCA
HX-PW001D	6AWG/16mm <sup>2</sup>		8.6mm	TIN CCA
HX-PW001E	8AWG/10mm <sup>2</sup>		6.7mm	SILVER COPPER
HX-PW001F	10AWG/6mm <sup>2</sup>		5.5mm	
HX-PW001G	12AWG/4mm <sup>2</sup>		4.5mm	



**PACKAGING:**



**COLOR REFERENCE CARD:**



 <b>19 unit structure</b>				
Model	AWG/square	Sheath	Diameter	Conductor
HX-PW003A	0/1AWG/50mm <sup>2</sup>	PVC	15mm	COPPER
HX-PW003B	2AWG/35mm <sup>2</sup>	FLEXIBLE PVC	12mm	TIN COPPER
HX-PW003C	4AWG/25mm <sup>2</sup>		10mm	CCA
HX-PW003D	6AWG/16mm <sup>2</sup>		8.6mm	TIN CCA
HX-PW003E	8AWG/10mm <sup>2</sup>		6.7mm	SILVER COPPER



**PACKAGING:**



**COLOR REFERENCE CARD:**



 <b>7 unit structure</b>				
Model	AWG/square	Sheath	Diameter	Conductor
HX-PW002A	0/1AWG/50mm <sup>2</sup>	PVC	15mm	COPPER
HX-PW002B	2AWG/35mm <sup>2</sup>	FLEXIBLE PVC	12mm	TIN COPPER
HX-PW002C	4AWG/25mm <sup>2</sup>		10mm	CCA
HX-PW002D	6AWG/16mm <sup>2</sup>		8.6mm	TIN CCA
HX-PW002E	8AWG/10mm <sup>2</sup>		6.7mm	SILVER COPPER
HX-PW002F	10AWG/6mm <sup>2</sup>		5.5mm	
HX-PW002G	12AWG/4mm <sup>2</sup>		4.5mm	

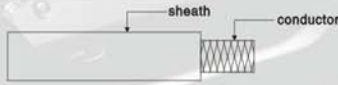


**PACKAGING:**



**COLOR REFERENCE CARD:**



 <b>Braiding structure</b>				
Model	AWG/square	Sheath	Diameter	Conductor
HX-PW004A	0/1AWG/50mm <sup>2</sup>	PVC	15mm	COPPER
HX-PW004B	2AWG/35mm <sup>2</sup>	FLEXIBLE PVC	12mm	TIN COPPER
HX-PW004C	4AWG/25mm <sup>2</sup>		10mm	CCA
HX-PW004D	6AWG/16mm <sup>2</sup>		8.6mm	TIN CCA
HX-PW004E	8AWG/10mm <sup>2</sup>		6.7mm	SILVER COPPER



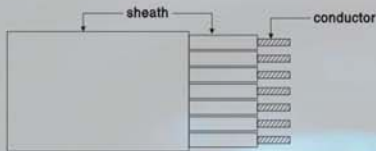
## HIGH-PERFORMANS TRAILER CABLE SERIES



PACKAGING:



COLOR REFERENCE CARD:

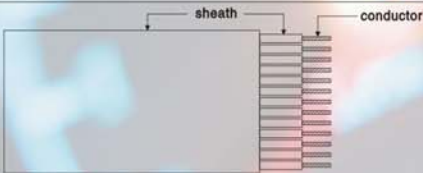


Model	AWG/square	Sheath	Diameter	Conductor
HX-PW005A	7c x 2.5mm <sup>2</sup>	PVC	14.3mm	COPPER
HX-PW005B	7c x 2.0mm <sup>2</sup>	FLEXIBLE PVC	12.9mm	TIN COPPER
HX-PW005C	7c x 1.5mm <sup>2</sup>		11.0mm	CCA
HX-PW005D	7c x 0.75mm <sup>2</sup>		10.0mm	TIN CCA
HX-PW005E	7c x 0.5mm <sup>2</sup>		9.5mm	SILVER COPPER

PACKAGING:



COLOR REFERENCE CARD:



Model	AWG/square	Sheath	Diameter	Conductor
HX-PW006A	13c x 2.5mm <sup>2</sup>	PVC	19.4mm	COPPER
HX-PW006B	13c x 2.0mm <sup>2</sup>	FLEXIBLE PVC	17.5mm	TIN COPPER
HX-PW006C	13c x 1.5mm <sup>2</sup>		14.5mm	CCA
HX-PW006D	13c x 0.75mm <sup>2</sup>		13.3mm	TIN CCA
HX-PW006E	13c x 0.5mm <sup>2</sup>		12.5mm	SILVER COPPER



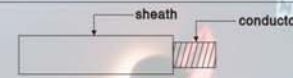
## HIGH-PERFORMANS ELECTRONIC WIRE SERIES



PACKAGING:



COLOR REFERENCE CARD:



Model	AWG/square	Sheath	Diameter	Conductor
HX-PW007A	12AWG	PVC	4.5mm	COPPER
HX-PW007B	14AWG	FLEXIBLE PVC	3.8mm	TIN COPPER
HX-PW007C	16AWG		3.2mm	CCA
HX-PW007D	18AWG		2.4mm	TIN CCA SILVER COPPER



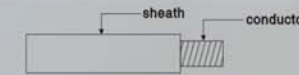
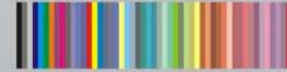
## HIGH-PERFORMANS PRIMARY WIRE SERIES



PACKAGING:



COLOR REFERENCE CARD:



Model	AWG/square	Sheath	Diameter	Conductor
HX-PW008A	10AWG	PVC	4.5mm	COPPER
HX-PW008B	12AWG	FLEXIBLE PVC	3.7mm	TIN COPPER
HX-PW008C	14AWG		3.1mm	CCA
HX-PW008D	16AWG		2.6mm	TIN CCA
HX-PW008E	18AWG		2.5mm	SILVER COPPER
HX-PW008F	20AWG		2.0mm	