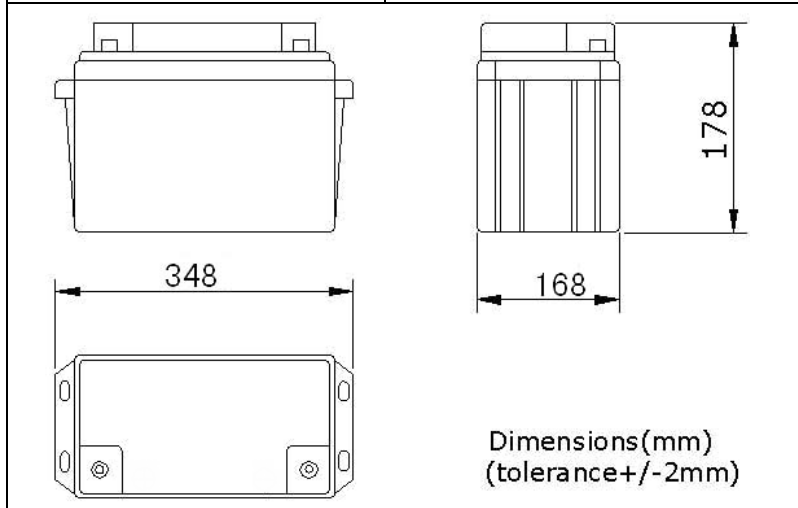


UNIPOWER

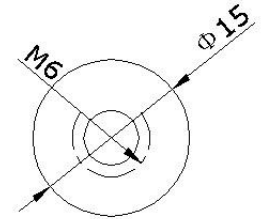
GEL65-12 (12V65Ah)

PHYSICAL SPECIFICATION

Nominal Voltage Nominal Capacity (10HR)		12V 65Ah
Dimension	Length	348±1mm (13.7 inches)
	Width	168±1mm (6.61 inches)
	Container Height	178±1mm (7.01 inches)
	Total Height	178±1mm (7.01 inches)
Weight		Approx. 21.2Kg (46.7lbs)
Standard Terminal		Bolt-and-nut lead terminal Bolt Type: M6



Bolt-and-nut terminal
Bolt Type: M6



(in mm)

ELECTRICAL SPECIFICATION

Capacity	10 hour rate (6.5A)	65Ah
	5 hour rate (11.05A)	55.5Ah
	3 hour rate (16.25A)	48.8Ah
	1hour rate (39A)	39Ah
Capacity affected by temperature	40°C (104 °F)	102%
	25°C (77 °F)	100%
	0°C (32 °F)	85%
Internal Resistance	Full charged battery (25°C,77 °F)6.1mΩ	
Designed life	≥720 Cycles @ 50% DOD (25°C)	
Constant Voltage Charge	Cycle	Initial Charging Current less than 16.25A Voltage 14.1~14.4V at 25°C (77 °F) Temperature Coefficient -5mV/°C
	Standby	No limit on Initial Charging Current Voltage 13.5~13.8V at 25°C (77 °F) Temperature Coefficient -3.3mV/°C

Discharge curves @ 25°C (77 ° F)

