

CPD系列迷你型平衡重电动叉车

CPD SERIES MINI TYPE ELECTRIC COUNTERBALANCED FORKLIFT

主要特点

MAIN CHARACTER

- | | |
|--|---|
| <ol style="list-style-type: none"> 1. 结构紧凑, 小巧灵活 2. 座驾舒适操作方便 3. 进口电控配置, 合理可靠 4. 二级门架, 自由提升, 可用于集装箱 | <ol style="list-style-type: none"> 1. Compact and flexible structure 2. Convenient driving with comfortable seat 3. Imported controller, safe and reliable 4. 2-layer mast with free lifting, suitable for using in container |
|--|---|

可选配置

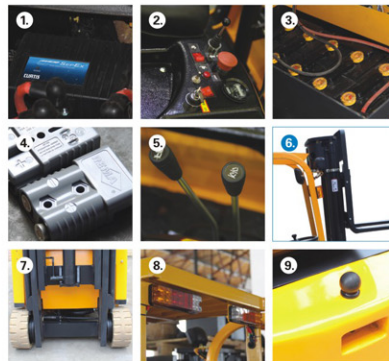
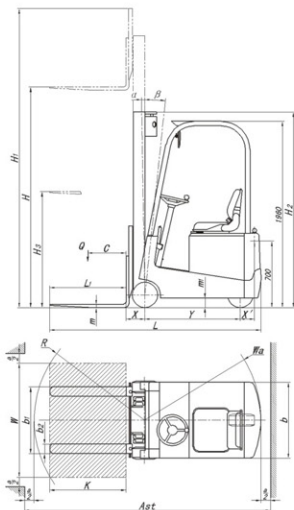
OPTIONAL



可安装侧移
Side Shift



交流电机
AC Driving Motor



1. 美国CURTIS控制器
2. CURTIS电量表, 带低电压保护
3. 385Ah大容量蓄电池
4. 德国REMA充电插件
5. 操纵杆控制货叉起升下降, 门架倾后仰
6. 带自由提升, 货叉起升时门架不起升
7. 实心无痕橡胶轮胎, 保护地面
8. 三种颜色后灯, 分别为制动、倒车、转向警示灯
9. 带牵引杆

1. CURTIS controller from America
2. CURTIS coulombmeter, have the function of low battery shut down
3. 385Ah large capacity battery
4. REMA plug from Germany
5. The levers control lifting of forks and tilt of mast
6. With free lifting height, when forks raising, mast is still
7. Solid traceless tyres, protect the floor
8. Three different colours, means brake, reverse and turning
9. With tow bar

技术参数

TECHNICAL DATA

特性 Identification		CPD10		
产品型号 Model		CPD10		
配置号 Config-code		SA10		
驱动形式 Drive Unit		电动 Electric		
驾驶方式 Operation type		座驾式 Seated		
额定载重 Load capacity	Q kg	1000		
载荷中心 Load center	C mm	400		
总长 Overall length	L mm	2238		
车体宽度 Overall width	b mm	820		
基本尺寸 Dimension	总高 Overall height	门架静止 Closed mast H2 mm	1757	2057
		护顶架 Overhead guard mm	1895	1895
	起升高度 Lift height	H mm	2500	3100
	作业时最大高度 Max working height	H1 mm	3350	3950
	自由提升高度 Free lift height	H3 mm	920	1220
	货叉尺寸 Fork dimensions	L1 x b2 x m mm	800 x 100 x 32	
	货叉外宽 Maximum fork width	b1 mm	200-700可调 (Adjustable)	
	最小离地间隙 Minimum ground clearance	m1 mm	100	
	最小直角通道 Min. right angle Aisle width	mm	1635	
	最小堆垛通道 Min. aisle width for stacking	Ast mm	2590 (for Pallet 1200 x 800)	
	门架倾角 Mast obliquity	α/β °	1/6	
	轴距 Wheelbase	Y mm	983-1050	
	前悬距 Front overhang	X mm	200	
后悬距 Rear overhang	X' mm	152		
转弯半径 Turning radius	Wa mm	1225		
性能 Performance	行驶速度 Travel speed	满载 Loaded Km/h	6.3	
		空载 Unloaded Km/h	8.0	
	提升速度 Lift speed	满载 Loaded mm/s	115	
		空载 Unloaded mm/s	180	
	下降速度 Lowering speed	满载 Loaded mm/s	187	
		空载 Unloaded mm/s	125	
爬坡能力 Gradeability	%	8		
制动方式 Brake type		液压制动 Hydraulic		
电机 Electric Motor	驱动电机功率 Drive motor power	KW	2.0	
	提升电机功率 Lift motor power	KW	2.8	
重量 Weight	蓄电池容量/电压 Battery capacity/voltage	Ah/V	385/24	
	自重(不含电池) Weight without battery	kg	1468	1500
	电池重量 Battery weight	kg	345	