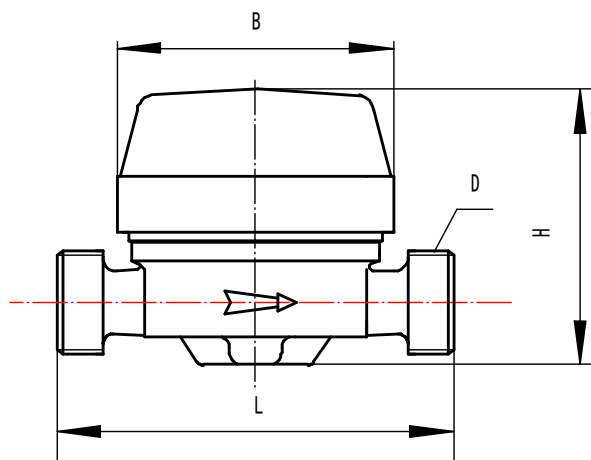


## LXDG-15M~20M Single-jet, Vane Wheel, Dry-dial Water Meter (Mini Type With Eight Number Wheels) (page 1/2)



### Application:

--Measuring the volume of cold potable water passing through the pipeline.

### Feature:

- Single-jet, dry-dial, free rotating register, small in size and light in weight,
- Magnetic drive, Resistance to exterior magnet interference,
- Keep the reading clear in a long term service.

### Note:

--Measuring accuracy conform to ISO 4064 class B standard.

### Working condition:

- Water temperature:  $0.1^{\circ}\text{C} \sim 30^{\circ}\text{C}$
- Water pressure :  $\leq 1.0\text{Mpa}$

### Maximum Permissible Error:

- (1) in the lower zone from  $q_{\min}$  inclusive up to but excluding  $q_t$  is  $\pm 5\%$ .
- (2) in the upper zone from  $q_t$  inclusive up to and including  $q_s$  is  $\pm 2\%$ .

### MAIN TECHNICAL SPECIFICATIONS

Type	Size (mm)	Class	$q_s$	$q_p$	$q_t$	$q_{\min}$	Minimum Reading	Maximum Reading
			Overload Flow	Permanent Flow	Transitiona Flow	Minimum Flow		
			$\text{m}^3/\text{h}$		$\text{L/h}$		$\text{m}^3$	
LXDG-15M	15	B	3.0	1.5	120	30	0.0001	99,999
LXDG-20M	20	B	5.0	2.5	200	50	0.0001	99,999

## LXDG-15M~20M Single-jet, Vane Wheel, Dry-dial Water Meter (Mini Type With Eight Number Wheels) (page 2/2)

### DIMENSIONS

Type	Size	L Length	B Width	H Height	D Connecting Thread
LXDG-15M	15	110	67.5	72	G3/4B
LXDG-20M	20	130	67.5	73.5	G1B

