



# 816C Wheel Loader



<b>Engine</b>	Yituo
<b>Gross Power</b>	55 kW (74 hp) @ 2,400 rpm
<b>Net Power</b>	50 kW (67 hp) @ 2,400 rpm
<b>Operating Weight</b>	5,470 kg
<b>Standard Bucket Size</b>	0.8m <sup>3</sup>
<b>Standard Breakout Force</b>	62 kN
<b>Standard Dump Clearance</b>	2,417 mm

# 816C

## Wheel Loader



### ENGINE

Emission Regulation	Tier 2 / Stage II
Make	YT4A2 - 24
Gross Power	55 kW (74 hp) @ 2,400 rpm
Net Power	50 kW (67 hp) @ 2,400 rpm
Peak Torque	251 N · m @ 1,600 rpm
Torque Rise %	15 %
Number of Cylinders	4
Aspiration	natural

### TRANSMISSION

Transmission Type	Counter shaft-type power shift
Torque Converter	3 element - single stage, single phase
Maximum Travel Speed, fwd	25 km/h
Maximum Travel Speed, rev	25 km/h
Number of Speeds, fwd	2
Number of Speeds, rev	2

### AXLES

Differential Front Type	conventional
Differential Rear Type	conventional
Axle Oscillation	11°

### STEERING

Steering Configuration	articulated
Steering Relief Pressure	14.8 MPa

### BRAKES

Service Brake Type	caliper dry disc
Service Brake Actuation	hydraulic
Parking Brake Type	shoe / drum
Parking Brake Actuation	mechanical

### HYDRAULIC SYSTEM

Main Pump Type	gear
Main Relief Pressure	18 MPa
Raise	4.4 s
Dump Time	1.2 s
Float Down Time	3 s
Fastest Total Cycle Time	8.6 s

### LOADER ARM PERFORMANCE

Tipping Load - Straight	4,895 kg
Tipping Load - Full Turn	4,180 kg
Bucket Breakout Force	62 kN
Maximum Dump Angle at Full Height	45 ± 1°
Dump Clearance at Full Height Discharge	2,417 mm
Dump Reach at Full Height Discharge	788 mm
Maximum Hinge Pin Height	3,049 mm
Maximum Digging Depth, Bucket Level	16.5 mm
Bucket Rollback at Ground Level	43°
Bucket Rollback at Carry	52°
Bucket Rollback at Maximum Height	64°

### BUCKET PERFORMANCE

Reference Bucket	0.8m <sup>3</sup>
------------------	-------------------

### DIMENSIONS

Length with Bucket Down	5,457 mm
Width Over Tires	1,940 mm
Wheelbase	2,200 mm
Wheel Tread	1,520 mm
Ground Clearance	285 mm
Turn Angle, Either Side	38°
Rear Angle of Departure	28.5°
Turning Radius, Outside of Tire	4,208 mm
Turning Radius, Center of Tire	3,980 mm
Turning Radius, Bucket Carry	4,502 mm

### TIRES

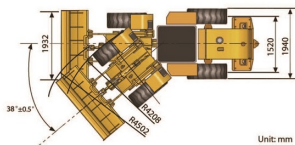
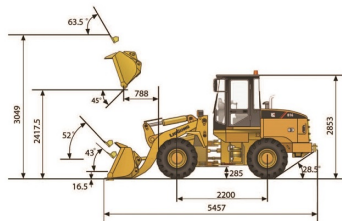
Tire Size	16 / 70 - 20
-----------	--------------

### OPERATING WEIGHTS

Operating Weight	5,470 kg
------------------	----------

### SERVICE CAPACITIES

Fuel Tank	95 L
Engine Oil	16 L
Cooling System	21 L
Hydraulic Reservoir	78 L
Transmission and Torque Converter	20 L
Axles, each	8 L



Unit: mm