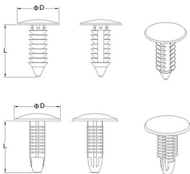
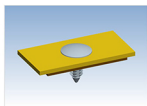


ITEM NO. GL



Material:PA66(Ul94-V2)

Color:black

Unit:mm

Application:applied to fasten inner panel of cars

Feature: 1. corrosion and abrasion resistance,

vibration proof

2.available for various kinds of

mounting diameter and thickness

3. easy and convenient to mount barely

by hand

Type	PN	ϕD	L	Mounting diameter
GL1	GP07078-A6ABB	49.7	19.1	7.6
GL2	GP07026-A6ABB	25.4	21.7	11.1
GL3	GP07021-A6ABB	19.1	17.7	5.7
GL4	GP07007-A6ABB	18	20	6.2-7.0
GL5	GP07008-A6ABB	17.6	15.5	7.9
GL7	GP07009-A6ABB	13	24	6.3
GL8	GP07066-A6ABB	20	19.3	7.9
GL21	GP07087-A6ABB	14.2	9.2	6.1/8/6.9
GL36	GP07034-A6ABB	18.9	21.8	8.3
GL37	GP07010-A6ABB	24.3	18	7.9
GL40	GP07023-A6ABB	25.7	19.8	7.6
GL42	GP07032-A6ABB	19.4	35.2	8
GL101	GP07088-A6ABB	25.2	20.3	7.9/8/8.2
GL102	GP07035-A6ABB	20.2	23.9	8.1
GL103	GP07033-A6ABB	17.4	12.7	5.4
GL104	GP07011-A6ABB	18.4	22.2	7.9
GL131	GP07067-A6ABB	24	24.1	7.9
GL138	GP07068-A6ABB	16	18.5	8
GL140	GP07012-A6ABB	19.1	12.7	7.1
GL150	GP07036-A6ABB	25.9	37	7
GL153	GP07002-A6ABB	13.4	16.2	5
GL155	GP07061-A6ABB	10	11.7	6
GL174	GP07079-A6ABB	40.8	12.8	8
GL186	GP07016-A6ABB	25.4	28.6	7.9
GL187	GP07063-A6ABB	20.2	14.8	5
GL198	GP07037-A6ABB	18	29.9	8.7
GL208	GP07017-A6ABB	25.6	38.8	7.2
GL209	GP07047-A6ABB	25.2	21.2	6.8/8/7.8
GL233	GP07074-A6ABB	12	6	5
GL300	GP07048-A6ABB	25.3	29.7	6.9/8/7.8
GL301	GP07024-A6ABB	19	22.8	8
GL303	GP07080-A6ABB	19.3	18.8	7.2/8/8.5
GL309	GP07081-A6ABB	9	13.2	7.4
GL326	GP07038-A6ABB	9.1	9.6	4.2
GL353	GP07082-A6ABB	25	15.5	12-13
GL368	GP07083-A6ABB	10.3	22.2	5.1
GL377	GP07086-A6ABB	18	20	7.5/7.5
GL410	GP07073-A6ABB	32.5	16.4	7.9
GL413	GP07015-A6ABB	17.8	16.3	7.7

Type	PN	ϕD	L	Mounting diameter
GL414	GP07039-A6ABB	17.8	16.4	7.7
GL415	GP07040-A6ABB	10.6	10.5	4
GL420	GP07085-A6ABB	30.9	27.3	7.9
GL423	GP07042-A6ABB	11.2	15.7	5.1
GL428	GP07069-A6ABB	32	30.1	8.1
GL431	GP07018-A6ABB	25.4	20.6	7.9
GL436	GP07043-A6ABB	21.5	21.2	11.5
GL478	GP07041-A6ABB	19.6	33.4	8.3
GL495	GP07064-A6ABB	12	12	4
GL503	GP07065-A6ABB	20	9	6
GL514	GP07044-A6ABB	15	18	5
GL529	GP07055-A6ABB	18	14.9	7.0-7.5
GL535	GP07003-A6ABB	30	9	6
GL539	GP07005-A6ABB	18	20	6
GL546	GP07070-A6ABB	44.5	23	7.9
GL555	GP07004-A6ABB	18	23	7
GL572	GP07071-A6ABB	33	20.7	8.2
GL575	GP07019-A6ABB	16.2	20.2	9.8
GL580	GP07006-A6ABB	12	16	6
GL582	GP07020-A6ABB	18	27.6	7.6
GL600	GP07084-A6ABB	19.6	33.3	8.2
GL609	GP07030-A6ABB	25.7	27.2	7.5
GL626	GP07025-A6ABB	9.8	16	4.8-5.2
GL674	GP07045-A6ABB	18.9	27.2	7.9
GL679	GP07062-A6ABB	18	47.4	7.7
GL825	GP07049-A6ABB	23.6	19.5	9.5
GL826	GP07050-A6ABB	12.6	15.4	7.6
GL827	GP07075-A6ABB	21	23.5	7.6
GL829	GP07051-A6ABB	18	34	7.5
GL834	GP07052-A6ABB	16	16	6.5/6.5
GL858	GP07076-A6ABB	16	27	6
GL866	GP07089-A6ABB	17.5	35	7.5
GL926	GP07096-A6ABB	22.8	17	6.3
GL942	GP07090-A6ABB	20.3	20.2	9.1
GL990	GP07091-A6ABB	25.5	29.6	6.7/6.6
GL1004	GP07092-A6ABB	16.1	15.5	6.7
GL1007	GP07093-A6ABB	19.9	19.2	6.8/6.6
GL1131	GP07094-A6ABB	15.2	19.7	7.2
GL1151	GP07077-A6ABB	18.8	23.2	5.3