

# NEOS3000A

## Fixed Cellular Terminal

VOICE CALLS  
DATE TRANSMISSION  
SMS TRANSMISSION  
REMOTE PROGRAM



- ★ Connect the NEOS3000A to an analog trunk of PABX or a standard phone
- ★ Convert the expensive PSTN to GSM phone call, to direct GSM to GSM traffic
- ★ Automatically take advantage of the lowest rate to reach the LCR
- ★ Mobile Trunk and Back-up telephone line

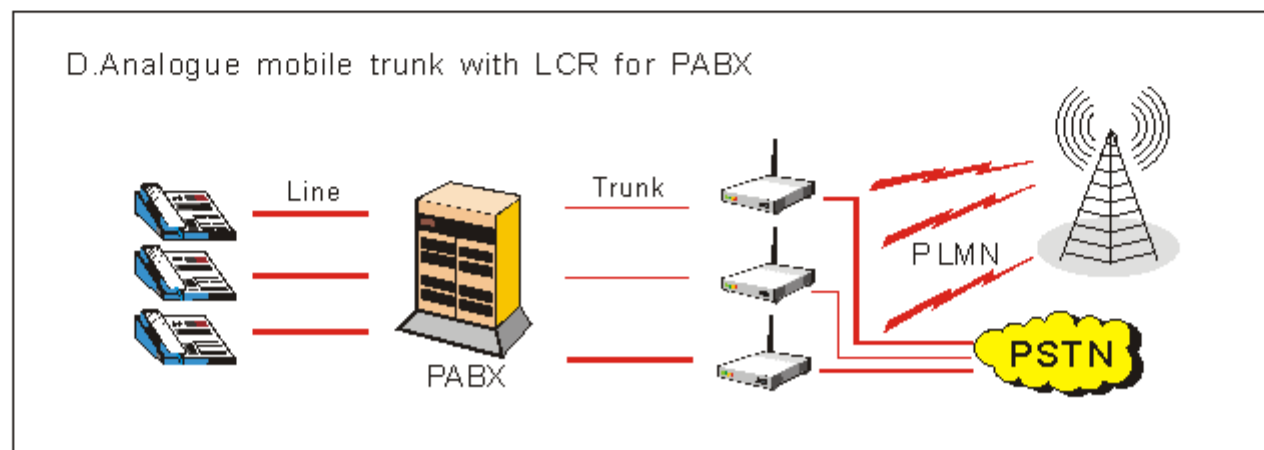
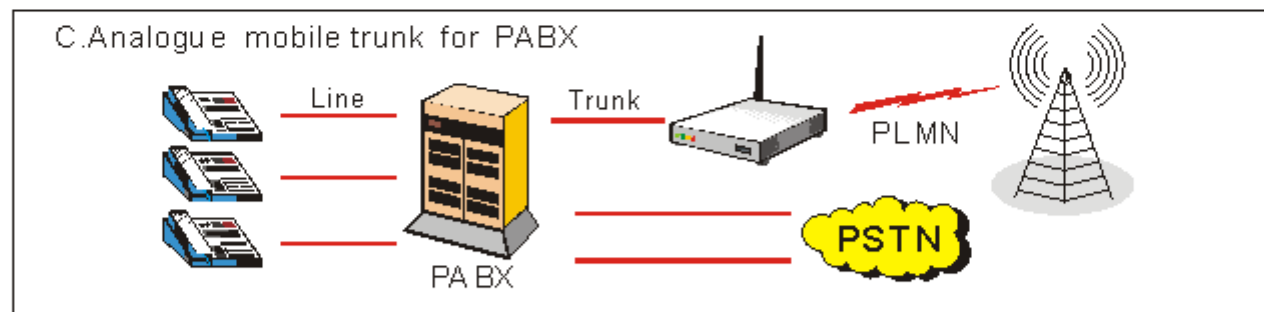
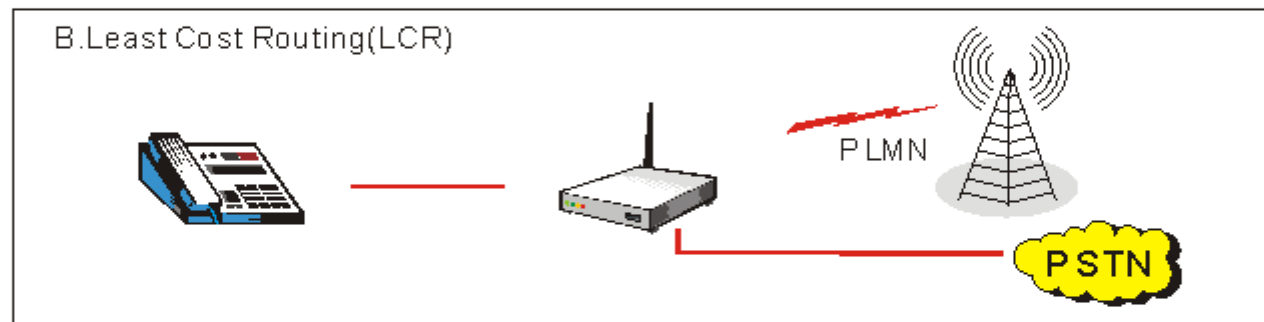
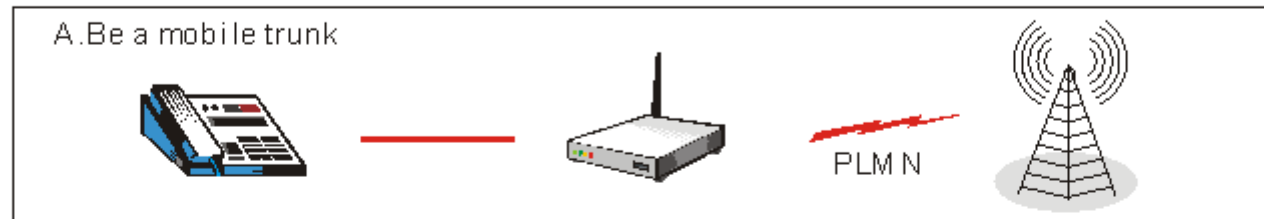


# Application

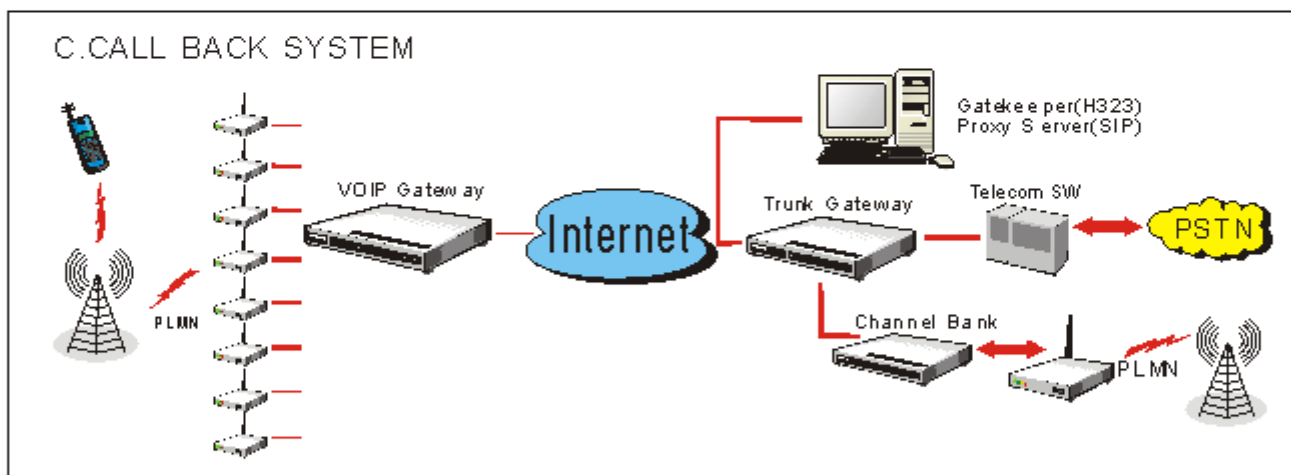
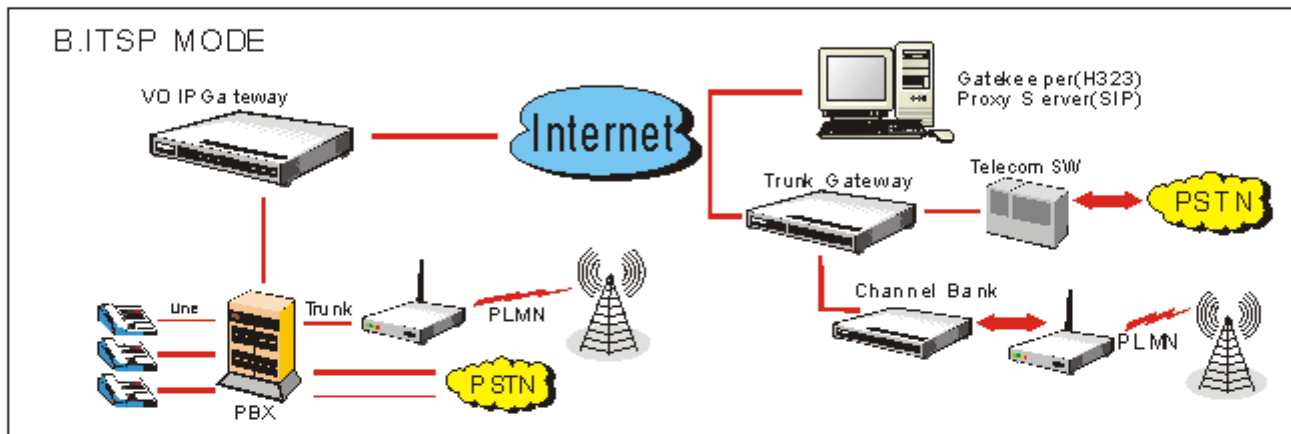
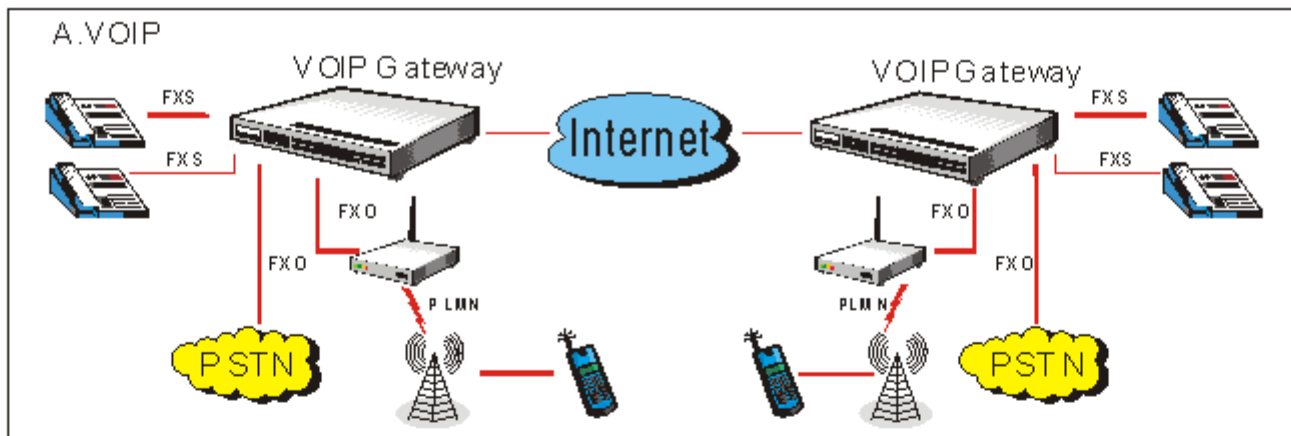
- ★Direct outgoing calls to wireless service through the NEOS3000A
- ★Mobile payphone
- ★Promotion with MPN
- ★Security feedback system
- ★Wireless credit card machine
- ★Last mile for ISR

## Example

### Standard Application



## Special Application



## Feature

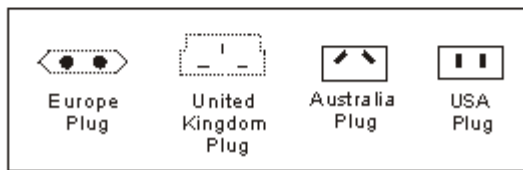
- ★ Trunk line interface: connection to PABX or analog phone as trunk line
- ★ Time controller: control the outgoing time
- ★ Remote programming: via DTMF tones from the phone
- ★ Fake ring back tone: simulation of ring back tone
- ★ LCR: least cost routing with automatic choice between GSM and PSTN
- ★ Reversal polarity
- ★ Caller ID
- ★ PC port: Data, SMS and PC Fax (NEOS3000A-P only)

## Model

- ★ Dual band GSM 900/DCS 1800MHz
- ★ Tri Band GSM 900/DCS 1800/PCS 1900MHz
- ★ Tri Band GSM 850/DCS 1800/PCS 1900MHz
- ★ CDMA 2000 1xRTT 800MHz with R-UIM
- ★ CDMA 2000 1xRTT 800MHz/ 1900MHz non R-UIM

## Option

### POWER



### SCM50

- ★ Manage and control the outgoing time of every SIM card
- ★ SCM50 must be coupled with NEOS3000 A series products



## Specification

### ★ Air interface

- GSM 850 class4 (2W)
- EGSM 900 class4 (2W)
- DCS 1800 class1 (1W)
- PCS 1900 class1 (1W)
- CDMA 2000 1xRTT class0 (0.2W)

### ★ Dimensions and Weight

- 160x120x27mm
- 280g

### ★ Phone interface

- Ringer equivalence number (REN):6
- PSTN emulation
- Echo cancellation

### ★ LED indicators

- Status(RSSI)
- MO
- CO
- Power

### ★ FCT Connectors

- Phone:RJ11 interface for POTS interface
- Line:RJ11 interface for PSTN
- SMS:connection for SCM50(optional product)
- PC:connection for PC Data/SMS/FAX
- PWR:DC power jack
- ANT:SMA plug female antenna(50 ohm)
- Signal:USB connector for LCM

### ★ Antenna (included)

- SMA magnet antenna (3meter)

### ★ AC to DC switching power supply (included)

- AC input:100~240VAC,50/60Hz
- Available plug:U.S.E.U.K.AU

### ★ Environment

- Operation temperature:-10°C~50°C
- Storage temperature:-40°C~60°C
- Humidity:5%~95%

### ★ Accessories(optional)

- LCM:information of signal
- RG-58 Antenna:higher gain antenna



群睿科技有限公司

GAINWISE TECHNOLOGY CO., LTD.

台湾台南縣10永康市中華路2號10F-4

10 F-4, NO.12, CHUNG HUA ROAD, YUNG KANG CITY, 710, TAINAN HSIEN, TAIWAN

TEL:+886-6-3127675 FAX:+886-6-3137670 <http://www.gainwise.com.tw>