

# CPD系列四支点平衡重电动叉车

CPD SERIES 4-WHEEL ELECTRIC COUNTERBALANCED FORKLIFT

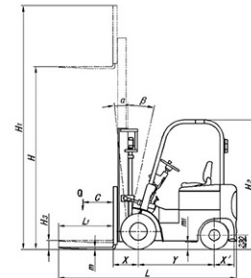
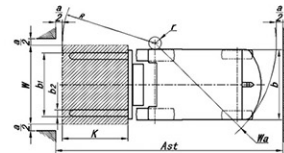
## 主要特点 MAIN CHARACTER

1. 采用美国CURTIS电控系统，电控系统成熟可靠
  2. 高强度车身设计和门架，坚固耐用，使用寿命长
  3. 整车关键部件，从电控、仪表到安全开关，都采用进口的知名品牌，重要部件经过了严格的可靠性试验，保证了整机性能的稳定
  4. 宽视野的门架设计，优化了门架结构，使操作者的视野更加开阔，作业效率及安全性得以提高
  5. 宽敞的操作空间，可调节式方向盘和座椅，操作者可以选择最佳的驾驶位置
  6. 各操纵系统合理布局，充分体现人机工程原理，提高舒适性，降低操作者的劳动强度
1. Top quality controller system from CURTIS, high reliability, ensures best performance in different states
  2. High-strength frame design and mast, strong and durable, ensures longer service life
  3. Wide view mast design, strong enough and make the operator have a fine view, work efficiently and safely
  4. Large inner & outer rail rollers provide additional capacity, less friction and resistance to wear compared to lighter materials used by competitive manufactures
  5. The hydraulic lift system is designed with a load lowering valve that reduces decent should the system lose pressure
  6. Four (4) wheel lift trucks are designed to be efficient, quiet and provide a clean air environment



1. 美国CURTIS控制器
2. 仪表盘布置合理，车子工作状态一目了然
3. 德国REMA充电插件
4. 操纵杆的位置符合人机工程学原理，可减轻驾驶员疲劳
5. 简单的前进后退档
6. 仿汽车用车灯转向灯
7. 拆装维护简单，打开后盖即可看到电器系统
8. 紧急情况下可按下红色断电开关，切断所有电源，车子立即停止
9. 可调节舒适座椅

1. CURTIS controller from America
2. Dashboard layout reasonable, display work conditions of truck clearly
3. REMA plug from Germany
4. The position of levers accords with principles of ergonomics, can reduce driver fatigue
5. Simple forward and reverse gears
6. Light turning control bar like car
7. Easy maintenance, open the cover to check electric system
8. Press the red button in an emergency, cut down all the power, stop the truck
9. Adjustable seat according to the operator



## 技术参数 TECHNICAL DATA

特性 Identification	产品型号 Model	CPD15			
	配置号 Config-code	QA15			
	驱动形式 Drive Unit	电动 Electric			
	驾驶方式 Operation type	座驾式 Seated			
基本尺寸 Dimension	额定载重 Load capacity	Q	kg	1500	
	载荷中心 Load center	C	mm	500	
	总长 Overall length	L	mm	2937	
	车体宽度 Overall width	b	mm	1070	
	总高 Overall height	H2	mm	2140	
	起升高度 Lift height	H	mm	3000	4500
	作业时最大高度 Max working height	H1	mm	4030	5530
	自由提升高度 Free lift height	H3	mm	150	1135
	货叉尺寸 Fork dimensions	L1 x b2 x m	mm	900 x 100 x 35	
	货叉外宽 Maximum fork width	b1	mm	200-950可调 (Adjustable)	
	最小离地间隙 Minimum ground clearance	m1	mm	110	
	最小直角通道 Min. right angle aisle width		mm	1950	
最小堆垛通道 Min. aisle width for stacking	Ast	mm	3500 (for pallet 1200 x 1000)		
门架倾角 Mast obliquity	$\alpha/\beta$	$^{\circ}$	6/12		3/6
转弯半径 Turning radius	Wa	mm	1850		
电机 Electric Motor	驱动电机功率 Drive motor power		KW	5.0	
	提升电机功率 Lift motor power		KW	6.3	
	转向电机 Turning motor power		KW	0.75	
	蓄电池 Battery		Ah/V	400/48	
重量 Weight	净重(不含电池) Weight w/o battery		kg	3100	3200
	电池重量 Battery weight		kg	750	