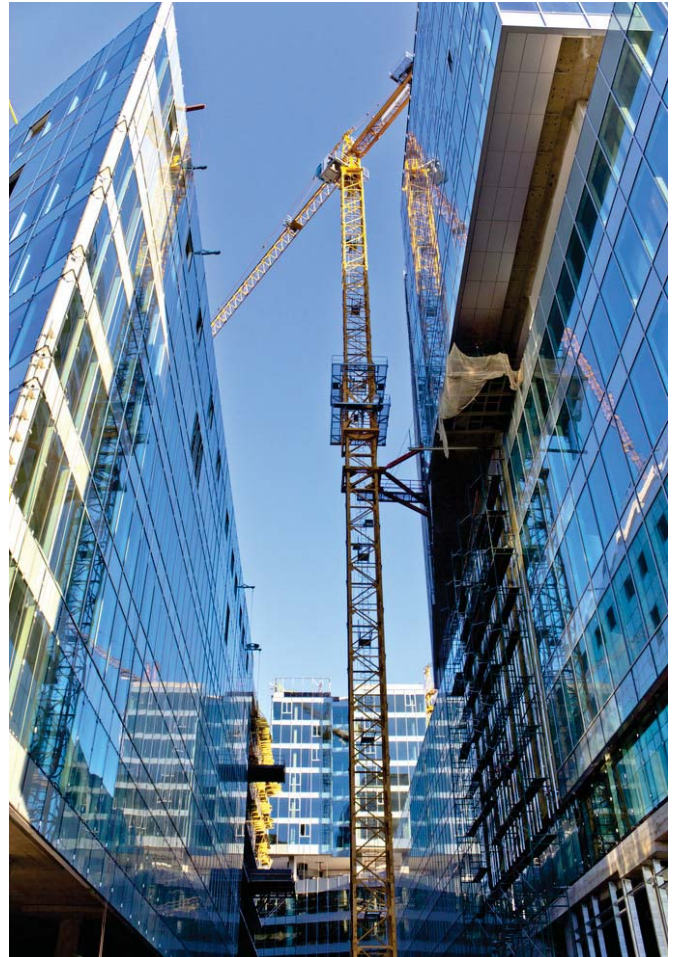


Rugged-Reliable Radio Repeater



- 16 Channels
- Power Output 5W
- Built-in Duplexer
- Working Voltage 12V(DC)
- Power Supply: 12V(DC) from Car
AC Main 90-230V
- Easy Installation & Easy Operation
- PC Software Programmable



STR-820

Rugged-Reliable Radio Repeater

<http://www.sfe.com.cn>

Main Features

- 16 Channels
- Power Output 5W
- Built-in Duplexer
- Working Voltage 12V(DC)
- Power Supply: 12V(DC) from Car
AC Main 90-230V
- Easy Installation & Easy Operation
- PC Software Programmable
- CTCSS/DCS Encode and Decode
- Wide/Narrow Bandwidth Selective:25/12.5KHz

General

| | |
|-----------------------|-------------------|
| Frequency Range | 136~174MHz |
| | 350~390MHz |
| | 400~470MHz |
| Channel Capacity | 16CH |
| Channel Spacing | 12.5KHz/25KHz |
| Operating Voltage | AC 90~230V/DC 12V |
| Antenna Impedance | 50Ω |
| Operating Temperature | -30℃~+60℃ |
| Frequency Stability | ± 2.5ppm |
| Dimension(H*W*D) | 200x85x240mm |
| Weight | 2kg |

Transmitter

| | |
|-----------------------|---------------------------------------|
| RF Power Output | 5W(VHF/UHF) |
| Modulation Type | F3E |
| Maximum Deviation | ≤ ±5.0KHz(Wide)/ ≤ ±2.5KHz(Narrow) |
| Spurious Emission | ≤ 65dB Below Carrier |
| Modulation Distortion | ≤ 5%(300-300Hz) |
| FM Noise | ≤ -45dB(Wide)/≤-40dB(Narrow) |

Receiver

| | |
|------------------------------|-------------------------------|
| Intermediate Frequency | 455KHz |
| Sensitivity(12dB SINAD) | 0.2μV(Wide)/0.25μV(Narrow) |
| Squelch Selectivity | 0.15μV(Wide)/0.2μV(Narrow) |
| Adjacent Channel Selectivity | ≥ 70dB(Wide)/≥ 65dB(Narrow) |
| Intermodulation | ≥ 55dB |
| Spurious Rejection | ≥ 55dB |
| Image Rejection | ≥ 55dB |
| FM Ham and Noise | ≤ -45dB(Wide)/≤ -40dB(Narrow) |
| Modulation Type | 16OF3E/11KOF3E |
| Operating Bandwidth | ≤ ±7KHz/≤ ±5KHz |
| Audio Distortion | ≤ 5% |

Above specifications are tested according to TIA/EIA-603.
Above specifications are subject to change without any notice due to technology enhancement.

 **Quanzhou SFE Electronic Technology Co.,Ltd**
Address:Daping Industry Park, Fengze District, Quanzhou City, Fujian
Province, China 362000

SFE retains the right to change the product design and specifications without notices. If any printing mistake occurs, SFE will not bear any relevant responsibility.

© 2013 SFE Electronic Technology Co.,Ltd.All Rights Reserved.

Your Local Dealer