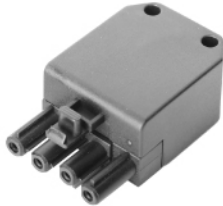


# Junction Boxes & Connection Units



PS2B-04M



PS2B-04F

## Pluggable Connector - IP30

Model	Description
PS2B-04M	Male connector, 4 Way, 250V 16A, Thickness 25mm
PS2B-04F	Female connector, 4 Way, 250V 16A, Thickness 25mm

Compatible with EU brand connectors.

Comply with EN61984 (VDE0627) standard.

Housing is made from PA66 (V-2 grade) material.

Wiring capacity from 0.5mm<sup>2</sup> to 2.5mm<sup>2</sup>.

Available for recessed mount : Male connector - PS2A-04M0+PM

Female connector - PS2A-04F0+PM

**K**engo<sup>®</sup>



### Luen Yick Electrical Mfg. Co., Ltd.

Flat F, 10/F., Blk. 2, Kingsford Ind. Bldg., 26-32 Kwai Hei St.,  
Kwai Chung, N.T., Hong Kong.

Tel:+852-24078836

Fax:+852-24198200

E-mail:sales@luenyick-elec.com

http://www.kengo.com



ISO 9001 : 2008  
Certificate No. : FM 85977



www.kengo.com