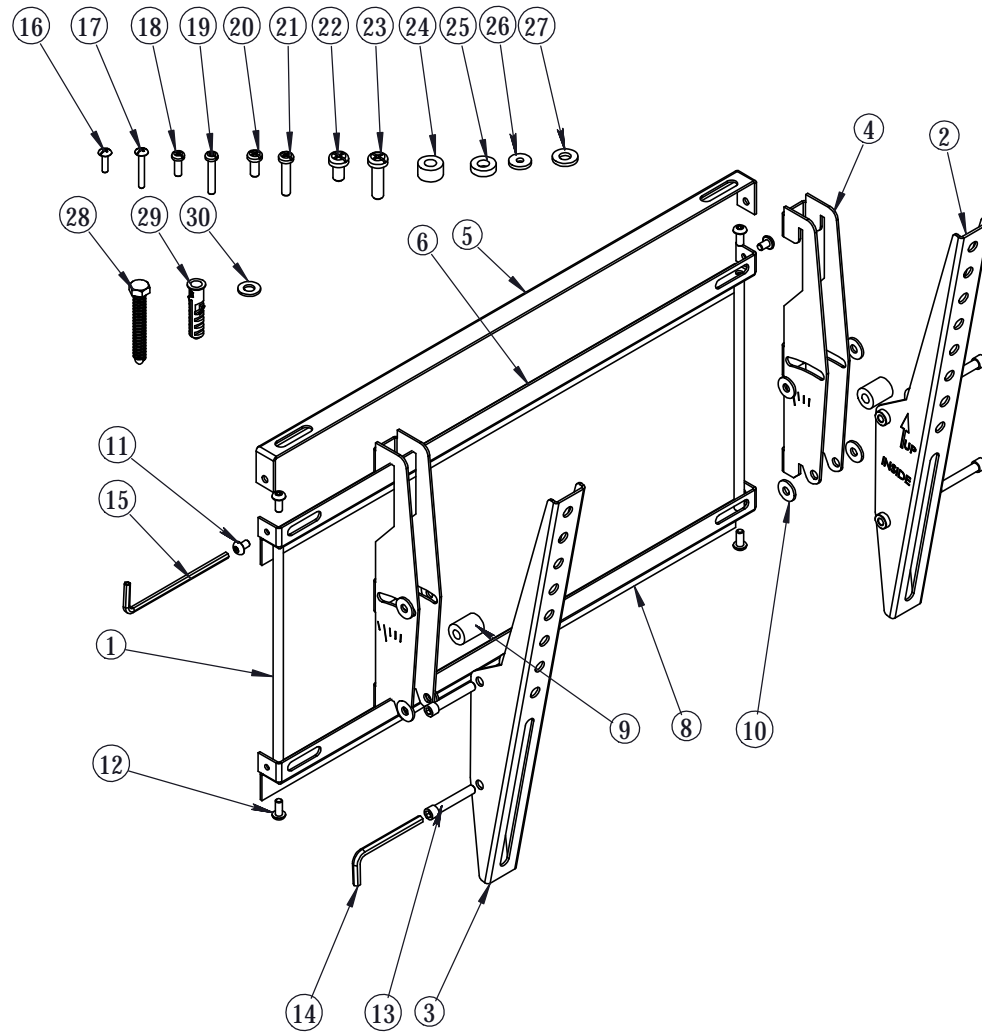


*** 2N1-M ***



NO.	Part Name	Qty.	Part NO.
1	Support Rod	2	CFT06310001xxxxx
2	Right arm	1	CFT06310002xxxxx
3	Left arm	1	CFT06310004xxxxx
4	Hanger	2	CFT06310006xxxxx
5	Top bracket	1	CFT06310007xxxxx
6	top wall bracket	1	CFT06310008xxxxx
8	Bottom wall bracket	1	CFT06310009xxxxx
9	Spacer	2	HPCTSA038xxxxx
10	Plastic washer	8	HPHSHB009xxxxx
11	Security Screw M5x8	2	HMLSNAMR022xxxxx
12	Allen Screw M5*12	4	HMLSSSMR002xxxxx
13	Allen screw 1/4"x1.5"	4	HMLSNAEA022xxxxx
14	Allen key 3/16"	1	HMBSKC033ZS001
15	Security allen key 5/32"	1	HMBSKC038ZS001
16	Cross Screw M4*16	4	HMLSJTMJ008xxxxx
17	Cross Screw M4*30	4	HMLSJTMJ011xxxxx
18	Cross Screw M5x16	4	HMLSJPMR009xxxxx
19	Cross Screw M5x30	4	HMLSJPMR013xxxxx
20	Cross Screw M6x16	4	HMLSJPMT006xxxxx
21	Cross Screw M6x30	4	HMLSJPMT009xxxxx
22	Cross Screw M8x16	4	HMLSJPMW003xxxxx
23	Cross Screw M8x30	4	HMLSJPMW007xxxxx
24	Plastic Spacer ID8.5*OD18*10	4	HPCTSA034xxxxx
25	Plastic Spacer ID8*OD18*5.0	4	HPCTSA033xxxxx
26	OmniMount Round Washer M4-M5	4	HMHSTD130xxxxx
27	OmniMount Round Washer M6-M8	4	HMHSTD125xxxxx
28	Hex Wood Screw 5/16"x2.5"	4	HMLSWAEG003xxxxx
29	Medium Anchor (10mmOD x 8mmID)	4	HPBH00028XB002
30	Washer ID8xOD16xT1.6	4	HMHSTD042xxxxx

NOTES :

20120108 : Part -12# Allen Screw M5*16mm
改爲M5*12mm

20120607 : 依客戶要求Part-26#鐵華司 $\phi 5.2 * \phi 13 * T2.5$
改爲 $\phi 5.2 * \phi 16 * T2.5$

Production NO.		FFST0631xxxxxxxx	
REV.00	CHECKED BY 1		
	CHECKED BY 2		