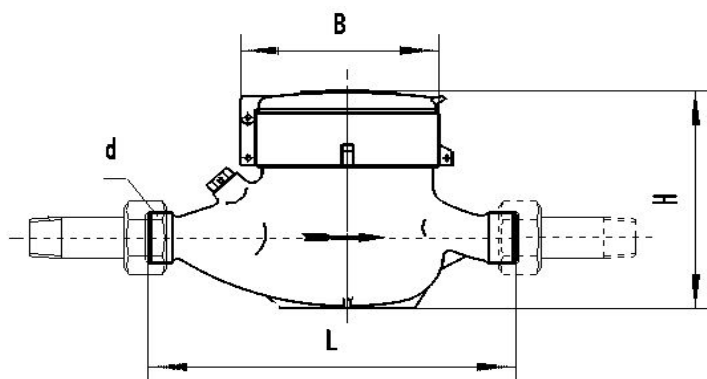


LXSG-15~50

Multi-jet, Vane Wheel, Dry-dial Water Meter (page 1/3)



Application:

--Measuring the total volume of cold portable water passing through the pipeline.

Feature:

- Multi-jet, dry-dial, easy for maintenance;
- Magnetic drive reliable characteristic, long working life;
- Vacuum sealed register ensures the dial keep free from fog and frost, Keep the reading clear in a long term service;
- Technical data conform to international standard ISO4064 Class B

Working condition:

Water temperature: 0.1°C~40°C for cold water meter . 0.1°C~90°C for hot water meter.
 Water pressure : ≤1.0Mpa or 1.6Mpa

Maximum permissible error:

- (1) in the lower zone from q_{min} inclusive up to but excluding q_t is $\pm 5\%$.
- (2) in the upper zone from q_t inclusive up to and including q_s is $\pm 2\%$;
 Hot water meter $\pm 3\%$

DIMENSION

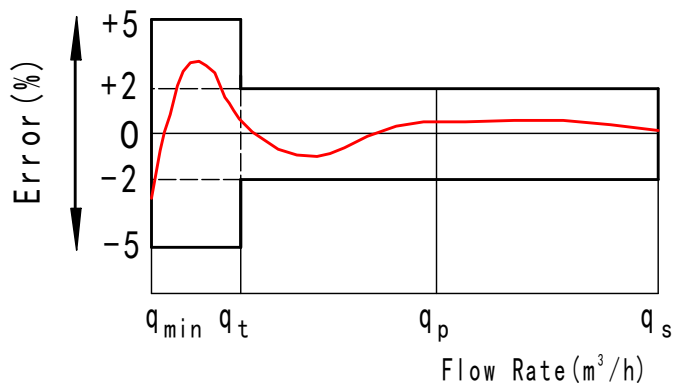
Type	Size	L Length	B Width	H Height	d Connecting Thread
LXSG-15	15	165	98	116	G3/4B
LXSG-20	20	190	98	117	G1B
LXSG-25	25	260	103.5	124	G1 ¹ / ₄ B
LXSG-32	32	260	103.5	124	G1 ¹ / ₂ B
LXSG-40	40	300	125	162	G2B
LXSG-50	50	300	125	162	G2 ¹ / ₂ B
		280	160	187.5	Flange connect ISO 7005-2:1988

LXSG-15~50 Multi-jet, Vane Wheel, Dry-dial Water Meter (page2/3)

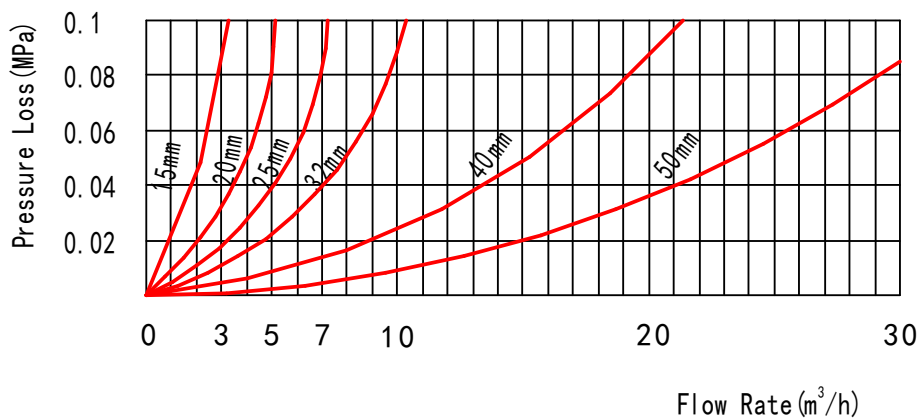
MAIN TECHNICAL SPECIFICATIONS

Type	Size (mm)	Class	q _s	q _p	q _t	q _{min}	Minimum Reading	Maximum Reading
			Overload Flow	Permanent Flow	Transitional Flow	Minimum Flow		
			m ³ /h		L/h		m ³	
LXSG-15	15	B	3	1.5	120	30	0.00005	99,999
LXSG-20	20	B	5	2.5	200	50	0.00005	99,999
LXSG-25	25	B	7	3.5	280.0	70	0.00005	99,999
LXSG-32	32	B	12	6.0	480	120	0.00005	99,999
LXSG-40	40	B	20	10	800	200	0.00005	99,999
LXSG-50	50	B	30	15	3000	450	0.00005	99,999

Flow Error Curve



Pressure Loss Curve



LXSG-15~50

Multi-jet, Vane Wheel, Dry-dial Water Meter (Page 3/3)

LXSG-15 ~ 50 MULTI-JET, VANE WHEEL, DRY-DIAL WATER METER

Code	Description	Material	QTY
1	Lid	HDPE	1
2	Hinge Pin	Brass	1
3	Cap	Brass	1
4	Sliding Gasket	PP	1
5	Glass	Toughened Glass	1
6	O-ring	Silicon Rubber	1
7	Register	Assembly	1
8	Central Gear	Component	1
9	Magnetic Shield Ring	Iron	1
10	Magnetic Shield Ring	Iron	1
11	Gearing box	ABS Plastic	1
12	Tightening Gasket	Rubber	1
13	Turbine Component	Component	1
14	Measuring Chamber	HIPS	1
15	Bottom Strainer	LDPE	1
16	Gasket	Silicon Rubber	1
17	Body	Brass	1
18	Adjusting Screw	POM	1
19	Adjusting Gasket	Nylon	1
20	Adjusting Plug	Brass	1
21	Inlet Strainer	PP	1
22	Coupling Gasket	Rubber	2
23	Coupling Tail Piece	Brass	2
24	Coupling Nut	Brass	2

