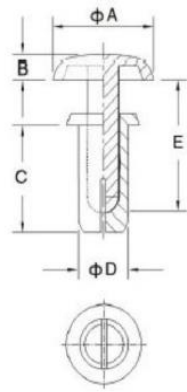
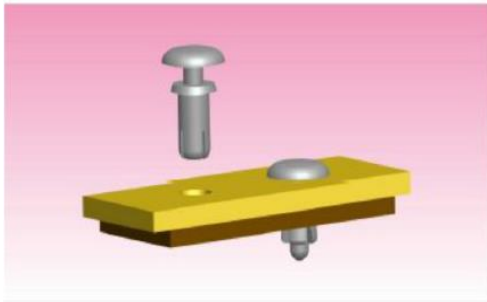
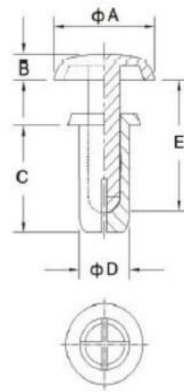


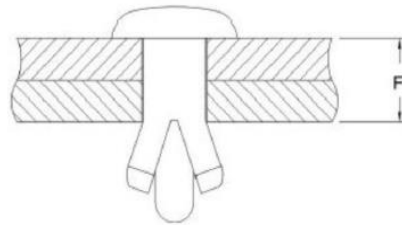
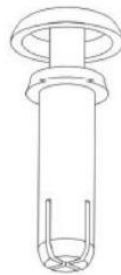
ITEM NO .R



No.1



No.2



Material : NYLON6 UL94-V2
 Color : Black/White
 Unit : mm
 Application :
 Used to fasten boards, firm and secure.

PN	mount dia	ØA	B	C	D	E	F	extraction force	insertion force	Drawing No.
R2024	2.1	4.2	1.2	2.4	2.0	3.8	0.6-1.5	≧ 3kg	≧ 2.5kg	NO1
R2032	2.1	4.2	1.2	3.2	2.0	3.8	1.3-2.0	≧ 3kg	≧ 2.5kg	NO1
R2040	2.1	4.2	1.2	4	2.0	5.5	2.1-2.8	≧ 3kg	≧ 2.5kg	NO1
R2048	2.1	4.2	1.2	4.8	2.0	5.5	2.9-3.6	≧ 3kg	≧ 2.5kg	NO1
R2056	2.1	4.2	1.2	5.6	2.0	7.2	3.7-4.4	≧ 3kg	≧ 2.5kg	NO1
R2064	2.1	4.2	1.2	6.4	2.0	7.2	4.5-5.2	≧ 3kg	≧ 2.5kg	NO1
R2632	2.7	5.0	1.4	3.2	2.6	4.6	1.0-2.0	≧ 5kg	≧ 3kg	NO1
R2642	2.7	5.0	1.4	4.2	2.6	4.6	2.1-3.0	≧ 5kg	≧ 3kg	NO1
R2648	2.7	5.0	1.4	4.8	2.6	6.2	2.7-3.6	≧ 5kg	≧ 3kg	NO1
R2655	2.7	5.0	1.4	5.5	2.6	6.2	3.4-4.3	≧ 5kg	≧ 3kg	NO1
R2664	2.7	5.0	1.4	6.4	2.6	7.8	4.3-5.2	≧ 5kg	≧ 3kg	NO1
R2672	2.7	5.0	1.4	7.2	2.6	7.8	5.1-6.0	≧ 5kg	≧ 3kg	NO1
R3035	3.1	6.4	1.6	3.5	3.0	5.1	1.0-2.0	≧ 8kg	≧ 3kg	NO1
R3045	3.1	6.4	1.6	4.5	3.0	6.1	2.0-3.0	≧ 8kg	≧ 3kg	NO1
R3055	3.1	6.4	1.6	5.5	3.0	6.1	3.0-4.0	≧ 8kg	≧ 3kg	NO1
R3065	3.1	6.4	1.6	6.5	3.0	7.1	4.0-5.0	≧ 8kg	≧ 3kg	NO1
R3075	3.1	6.4	1.6	7.5	3.0	9	5.0-6.0	≧ 8kg	≧ 3kg	NO1
R3080	3.1	6.4	1.6	8.0	3.0	9	5.5-6.5	≧ 8kg	≧ 3kg	NO1
R3090	3.1	6.4	1.6	9.0	3.0	11	6.5-7.5	≧ 8kg	≧ 3kg	NO1
R3100	3.1	6.4	1.6	10.0	3.0	11	7.5-8.5	≧ 8kg	≧ 3kg	NO1
R3535	3.6	6.4	1.6	3.5	3.5	5.1	1.2-2.1	≧ 12kg	≧ 4kg	NO2
R3545	3.6	6.4	1.6	4.5	3.5	6.1	2.2-3.1	≧ 12kg	≧ 4kg	NO2

R3550	3.6	6.4	1.6	5.0	3.5	6.1	2.7-3.6	≅ 12kg	≅ 4kg	NO2
R3555	3.6	6.4	1.6	5.5	3.5	7.1	3.2-4.1	≅ 12kg	≅ 4kg	NO2
R3560	3.6	6.4	1.6	6.0	3.5	7.1	3.7-4.6	≅ 12kg	≅ 4kg	NO2
R3570	3.6	6.4	1.6	7.0	3.5	9	4.7-5.6	≅ 12kg	≅ 4kg	NO2
R3580	3.6	8.0	1.6	8.0	3.5	9	5.7-6.6	≅ 12kg	≅ 4kg	NO2
R4045	4.1	8.0	1.8	4.5	4.0	5.6	1.5-2.5	≅ 20kg	≅ 4kg	NO2
R4050	4.1	8.0	1.8	5.0	4.0	7	2.5-3.5	≅ 20kg	≅ 4kg	NO2
R4060	4.1	8.0	1.8	6.0	4.0	7	3.5-4.5	≅ 20kg	≅ 4kg	NO2
R4070	4.1	8.0	1.8	7.0	4.0	9	4.5-5.5	≅ 20kg	≅ 4kg	NO2
R4080	4.1	8.0	1.8	8.0	4.0	9	5.5-6.5	≅ 20kg	≅ 4kg	NO2
R4085	4.1	8.0	1.8	8.5	4.0	9.6	6.0-7.0	≅ 20kg	≅ 4kg	NO2
R4090	4.1	8.0	1.8	9.0	4.0	11	6.5-7.5	≅ 20kg	≅ 4kg	NO2
R4100	4.1	8.0	1.8	10.0	4.0	11	7.5-8.5	≅ 20kg	≅ 4kg	NO2
R4120	4.1	8.0	1.8	12.0	4.0	14	9.1-10.5	≅ 20kg	≅ 4kg	NO2
R5045	5.1	9.0	2.2	4.5	4.0	6.5	1.5-2.5	≅ 25kg	≅ 5kg	NO2
R5055	5.1	9.0	2.2	5.5	5.0	6.5	2.5-3.5	≅ 25kg	≅ 5kg	NO2
R5065	5.1	9.0	2.2	6.5	5.0	8.5	3.5-4.5	≅ 25kg	≅ 5kg	NO2
R5075	5.1	9.0	2.2	7.5	5.0	8.5	4.5-5.5	≅ 25kg	≅ 5kg	NO2
R5085	5.1	9.0	2.2	8.5	5.0	10.5	5.5-6.5	≅ 25kg	≅ 5kg	NO2
R5095	5.1	9.0	2.2	9.5	5.0	10.5	6.5-7.5	≅ 25kg	≅ 5kg	NO2
R5105	5.1	9.0	2.2	10.5	5.0	12	7.5-8.5	≅ 25kg	≅ 5kg	NO2
R6060	6.1	12	3	6.0	6.0	9	2.5-4.0	≅ 25kg	≅ 5kg	NO2
R6080	6.1	12	3	8.0	6.0	10	4.0-5.5	≅ 25kg	≅ 5kg	NO2