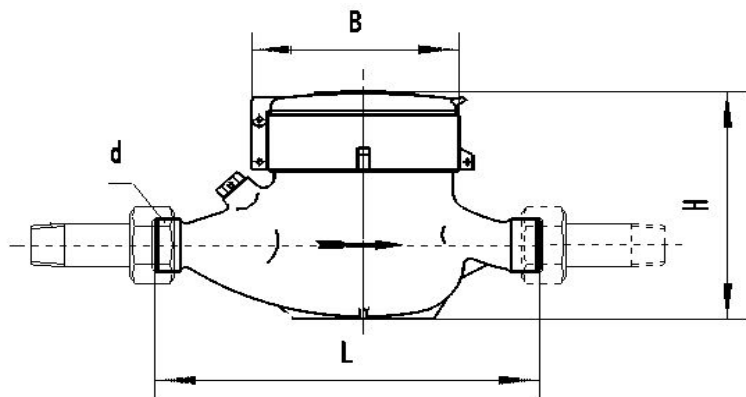


## LXSG-15~20 Multi-jet, Vane Wheel, Dry-dial (or Wet) Water Meter (Page1/2)



### Application:

--Measuring the total volume of cold portable water passing through the pipeline.

### Feature:

- Multi-jet, dry-dial, easy for maintenance;
- Magnetic drive reliable characteristic, long working life;
- Vacuum sealed register ensures the dial keep free from fog and frost, Keep the reading clear in a long term service;
- Technical data conform to international standard ISO4064 Class B

### Working condition:

Water temperature: 0.1 °C ~ 40 °C for cold water meter .

Water pressure :  $\leq 1.0\text{Mpa}$

### Maximum permissible error:

- (1) in the lower zone from  $q_{\min}$  inclusive up to but excluding  $q_t$  is  $\pm 5\%$ .
- (2) in the upper zone from  $q_t$  inclusive up to and including  $q_s$  is  $\pm 2\%$ ;

### MAIN TECHNICAL SPECIFICATIONS

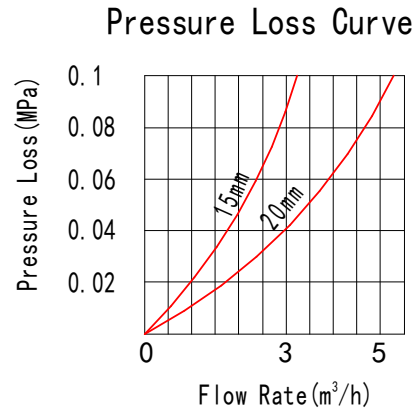
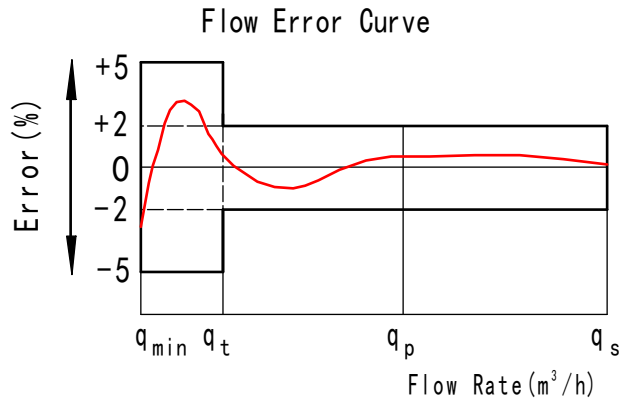
Type	Size (mm)	Class	$q_s$	$q_p$	$q_t$	$q_{\min}$	Minimum Reading	Maximum Reading
			Overload Flow	Permanent Flow	Transitional Flow	Minimum Flow		
			m <sup>3</sup> /h		L/h		m <sup>3</sup>	
LXSG-15	15	B	3	1.5	120	30	0.00005	99,999
LXSG-20	20	B	5	2.5	200	50	0.00005	99,999

### DIMENSIONS

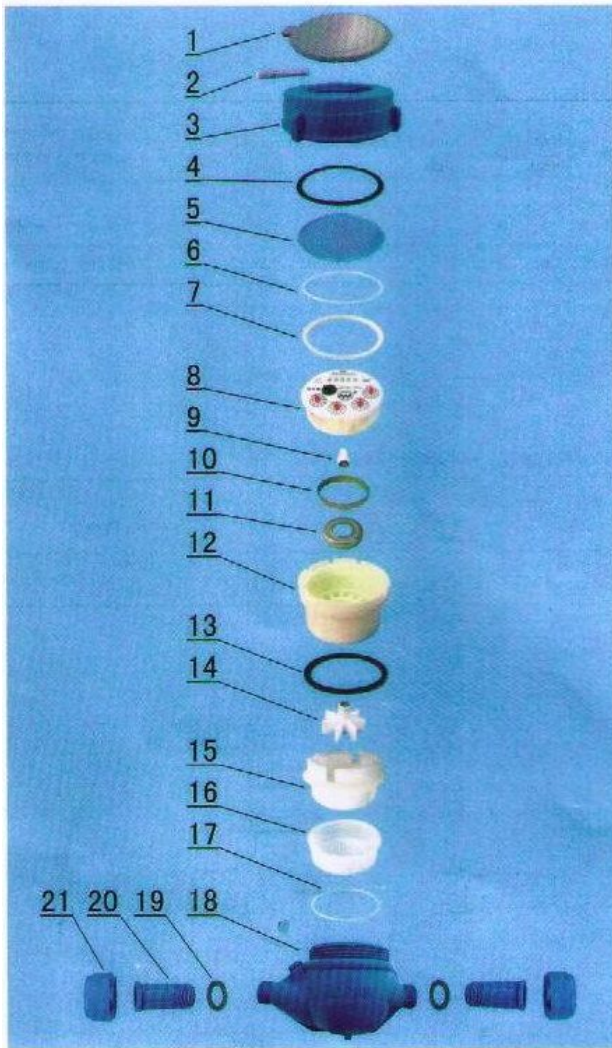
Type	Size	L Length	B Width	H Height	d Connecting Thread
	mm				
LXSG-15	15	165	104	121	G3/4B
LXSG-20	20	190	104	121	G1B

## LXSG-15~20 Multi-jet, Vane Wheel, Dry-dial (or Wet) Water Meter

(Page2/2)



### LXSG-15~50 MULTI-JET, VANE WHEEL, DRY-DIAL



Code	Description	Material	QTY
1	Lid	HDPE	1
2	Hinge Pin	Brass	1
3	Cap	Engineering Plastic	1
4	Sliding Gasket	PP	1
5	Glass	Tempered Glass	1
6	O-ring	Silicon Rubber	1
7	Register Fixing Ring	HIPS	1
8	Register	Assembly	1
9	Central Gear	Component	1
10	Magnetic Shield	Iron	1
11	Magnetic Shield	Iron	1
12	Gearing box	ABS Plastic	1
13	Tightening Gasket	Rubber	1
14	Turbine Component	Component	1
15	Measuring Chamber	HIPS	1
16	Bottom Strainer	LDPE	1
17	Gasket	Silicon Rubber	1
18	Body	Engineering Plastic	1
19	Coupling Gasket	Rubber	2
20	Coupling Tail Piece	Engineering Plastic	2
21	Coupling Nut	Engineering Plastic	2