



SD16 Bulldozer

Engine model: Shangchai C6121/Steyr WD615T1-3A

Rated power: 120 kw (160 HP)

Operating weight: 17 t



SHANTUI

SHANTUI SD16

SPECIFICATION

| Specification \ Blade type | Straight-tilt | Angle | U-Blade |
|----------------------------|---------------|-------|---------|
| Min.ground clearance(mm) | 400 | 400 | 400 |
| Ground pressure(MPa) | 0.067 | 0.067 | 0.067 |
| Min.turning radius(m) | 4.7 | 4.5 | 4.9 |
| Gradeability(°) | 30 | 30 | 30 |
| Track gauge(mm) | 1880 | 1880 | 1880 |

ENGINE

Model Shangchai C621/STEYR WD615TI-3A
 Water cooled,in-line,4-stroke injection direct
 Rated horsepower 120Kw
 Cylinder number-bore X stroke 6-126mm X 130mm
 Piston displacement 9.726L
 Min.fuel consumption 214g/Kw.h
 Max.torque 764N.M

POWER TRANSMITTING SYSTEM

Torque Converter 3-element,1 stage,1phase
 Transmission Planetary gear type,power-shift,forced lubrication
 Main Drive Spiral bevel gear,single-stage speed reduction
 dplsdh luntivsyion.
 Steering Clutch Wet,multi-disc,spring loaded,
 hand hydraulically separated, inter-linking with steering brake.
 Steering Brake Wet,floating band structure,
 foot brake with hydraulic booster
 Final drive Tow-stage speed reduction of spur gear,
 splash lubrication

TRAVEL SPEED

| Gear | 1st | 2nd | 3rd |
|-------------|--------|--------|---------|
| Forward(km) | 0-3.29 | 0-5.28 | 0-9.63 |
| Reverse(km) | 0-4.28 | 0-7.59 | 0-12.53 |

UNDERCARRIAGE SYSTEM

Type Sprayed beam,
 suspended structure of equalizer
 Carrier rollers(each side) 2
 Track rollers(each side) 6
 Track type Assembled,single-tooth
 Width of track shoes 510mm
 Pitch 203.2mm

HYDRAULIC SYSTEM

Max.pressure 14MPa
 Pump type Gear pump
 Discharge 243L/min
 Bore of working cylinder X number 110mm X 2

BLADE

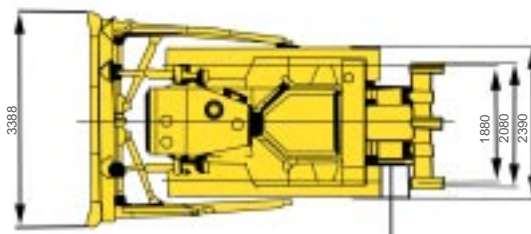
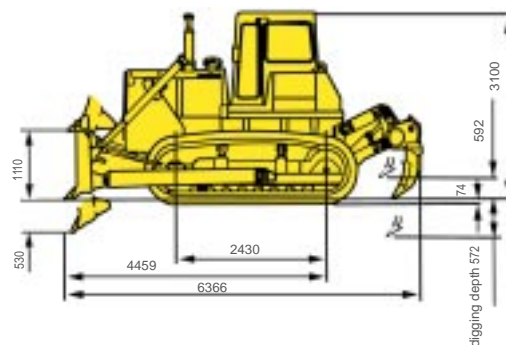
| Specification \ Blade type | Straight-tilt | Angle | U-Blade |
|---|---------------|-------|---------|
| Dozing capacity(m³) | 4.5 | 4.4 | 5.0 |
| Efficiency(m³/H)(Theoretical value 40m) | 225 | 225 | 250 |
| Blade width(mm) | 3388 | 3970 | 3556 |
| Blade height(mm) | 1149 | 1090 | 1120 |
| Max.drop below ground (mm) | 540 | 540 | 530 |
| Max.tilt adjustment(mm) | 400 | - | 400 |

RIPPER

Max.digging depth of 3-Shank Ripper 572mm
 Max.lift above ground 592mm
 Weight of 3-Shank Ripper 1710kg

OVERALL DIMENSIONS

Straight-tilt blade



Note:Materials and specifications are subject to change without notice.