



SHANGHAI UPG INTERNATIONAL TRADING CO., LTD

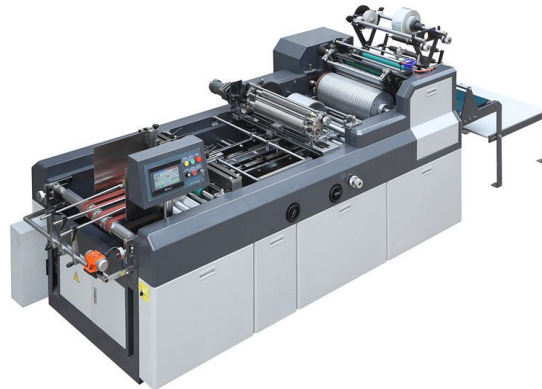


LQT-700 Window Patching Machine

Add: Room 2403 Jincheng Mansion 511 Tianmuxi Road, 200070 P.R.China

TEL: 86-21-63177436 FAX: 86-21-63538343

Email: huangwei@shanghai-upg.com



LQT-700 Window Patching Machine

1.Quotation:

LQT-700 USD /unit

2. Terms of Payment:

30% deposit by T/T when confirming the order
70% balance by T/T before shipping.

3.Introduction of Product :

700 Series Window Patching Machines are widely used for sticking films on the windows of various color window boxes ,color boxes and paper boxes,e.g medicine box ,shirt box,etc. It is developed on the original window patching machine in light of customers' requirements. Our research and development team, through the continuous improved &perfect human design,let the machines be easier to operate and better in efficiency, accuracy and stability.

Both basic components and major automated accessories employ the proprietary technology of this company. Therefore,700 series Window Patching Machine can meet customers' requirements at a higher level.

LQT-700 is the Innovation Machine of Window Patching Machine, Manufactured & Designed by our own Technical Team.

4.Structure Characteristics :

LQT Series window patching machine could Gluing and Pasting film on the after die cutting paper cartons' windows.Flat belt paper suction mechanism ,single paper feeding without shutting down the machine ,Brass pin position checking ,accurate locating.when paper arriving the Gluing part. Automatic gluing by rubber roller, location, and then spread to the feeding film part, film attached by gas suction drum and then let the film to the correct position of paper window, film will be released

and rolled, then complete the paste process

LQT series Window Patching Machine are well designed with micro device and easily adjustment , It is an ideal equipment of paper lamination processing.\

5.ADVANTAGE:

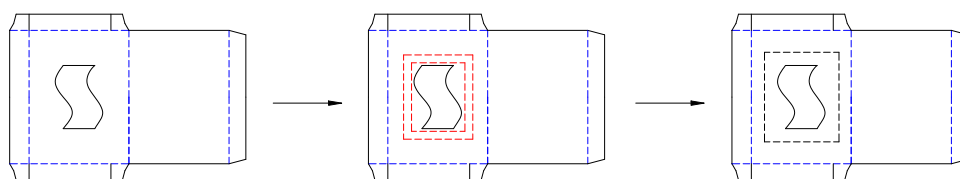
The paper feeder is controlled by PLC with a human-computer interface. The length of paper to be fed can be entered on the touch screen, so that paper can be input quickly and accurately.Also,it applies to card paper and corrugated paper.

Film Feeding Part is controlled by the Imported Servo System, input the needed Film's Length on the Touch Screen, Saving the adjust time and highly precision.

The Gluing Part install a small Motor, can rotate by itself. It also can be be easily drawn out for setting up and cleaning.

The Film Cutting Part & the Film Patching Part install free axial rotation,is used for various shape & position of paper window, Saving the adjust time , Greatly improve the production efficiency.

Based on the original mechanism, the layout of each section of this product has been improved in order to reduce the adjusting time, so that it becomes more efficiency and friendly.



制品流程
Envelop production process

1. 给纸 (Paper feeding)
2. 定位 (Locating)
3. 印胶 (Glue applying)
4. 上胶膜 (Film Patching)
5. 完成 (Completing)



6. Electrical Configuration:

Servo Motor: Japan Yaskawa

Relay: omron

PLC: panasonic

Touch Screen: Weimview

Drive: China Ribo or Japan Toshiba(optional)

Power Switch: Schneider

Swich Button: Schneider

7. Technical parameters:

Main specifications:	
Model	LQT-700
Speed	7000-11000pcs/h
Paper Length	120 - 700mm
Paper Width	200- 690mm
Film Length	50- 400mm
Film Width	30 - 400mm
Paper GSM	250 - 1000g
Film Thickness	0.03 - 0.15mm
Power of Pump	1.5 kw
Main Power	2.2 kw
Weight	1800 kg
External Dimension	4200*1400*1500 mm