

ROB900 TYRE-DEFATION DEVICE

Any vehicle, any tire type, when it hit the ROB900, the consequence is STOP!

- ◆ **Light weight, easy to carry and operate**
- ◆ **Compact struction and tough case.**
- ◆ **Quickly and Safely deploy.**





ROB900 is used by the policeman and other government departments for preventing the aimed vehicles from silpping away.Itis very useful for reducing the damage of property and save life when pursuing the aimed car on the high speed way or city road.

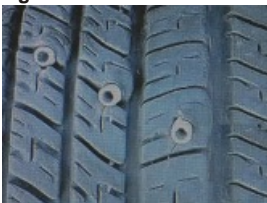
The stinger with a handle on one side and pins on the tops.The rustproof steel pins on the PC bracket are very compact and sharp ,wherever any style of types ,when it comes over on this,the pins will spike into the tire,as the tire leaves the stinger unit, the spikes to be pulled out of the unit and stay in the tire. The spikes, which are hollow, penetrate the tire and liner(fig 1), letting the air out in a controlled deflation, the tire air will be all deflated in 30seconds and the vehicle will be stopped quickly but safely.The short time means save more life and reduce more damage ,as normally the damage will occur in two minutes when pursuitting on high speed.

It can be deployed in seconds by single person.Thrown the draw rope across the road,then pull out the stinger .This process can be completed in seconds so as to get the possibility of life safe of the operator.

Features

- Light enough for easy carry and deployment, yet heavy enough for stability and won't blow or float away.
- Can be deployed by single person in seconds in any weather conditions and on any road surface.
- 210 pieces stingers, 8 meters extend distance ,apply to at most 10 meters width of roads.
- 20 replacement spikes with silicone sleeves and safety caps.
- Polymer and aluminium frame for hard case, compact and durable.

fig 1



Name	Parameter
Pricker	210pcs
Length	8m
Extend Stinger width	0.16m
Pricker length	3.2cm
Weight	14.2Kg
Size	605mmX775mmX138mm