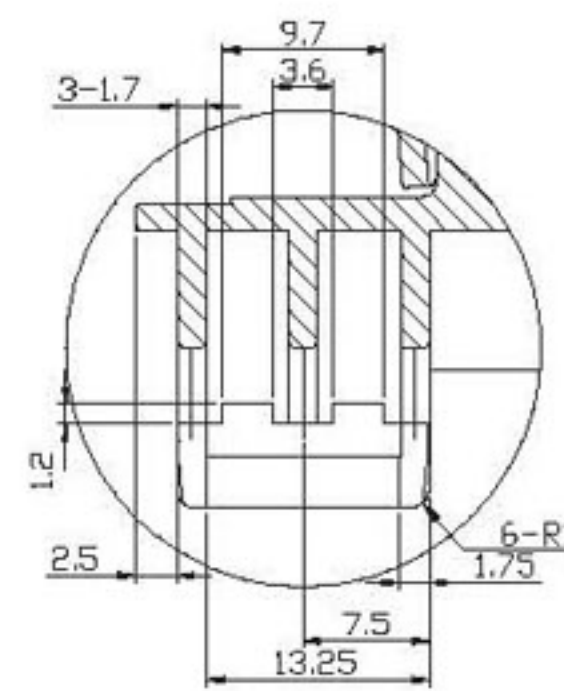


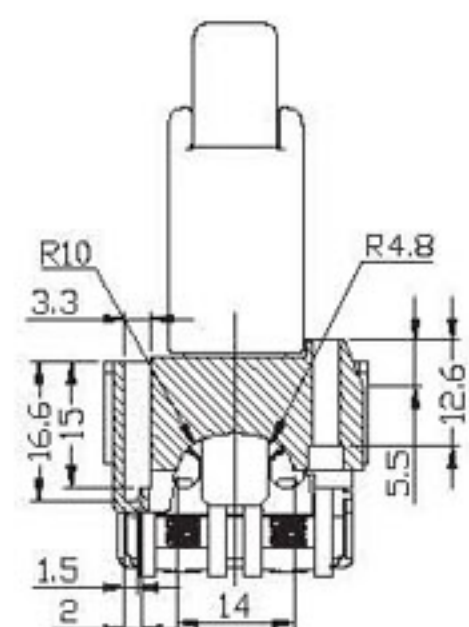
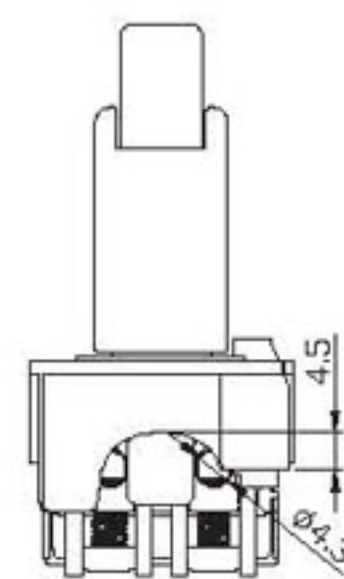


- ▶ Contact rating : 18A 125VDC UL & C-UL  
25A 125VAC  
1HP 125VAC 2HP 250VAC  
13(13A) 250~ 5E4 ENEC  
15(15)A 125V~ 5E4
- ▶ Initial contact resistance  
With by-pass : 30mΩ(max.)
- ▶ Insulation resistance : 500MΩ(min.) 500VDC
- ▶ Terminal to terminal dielectric
- ▶ Initial withstand voltage :  
Please reference test specification-3.3
- ▶ Operation life for loading : 50,000 cycles(min.)
- ▶ Operation force : full stroke 32±5N (MAX 47N)
- ▶ Lock type : lock off
- ▶ Material used must be comply with BQI-0555.

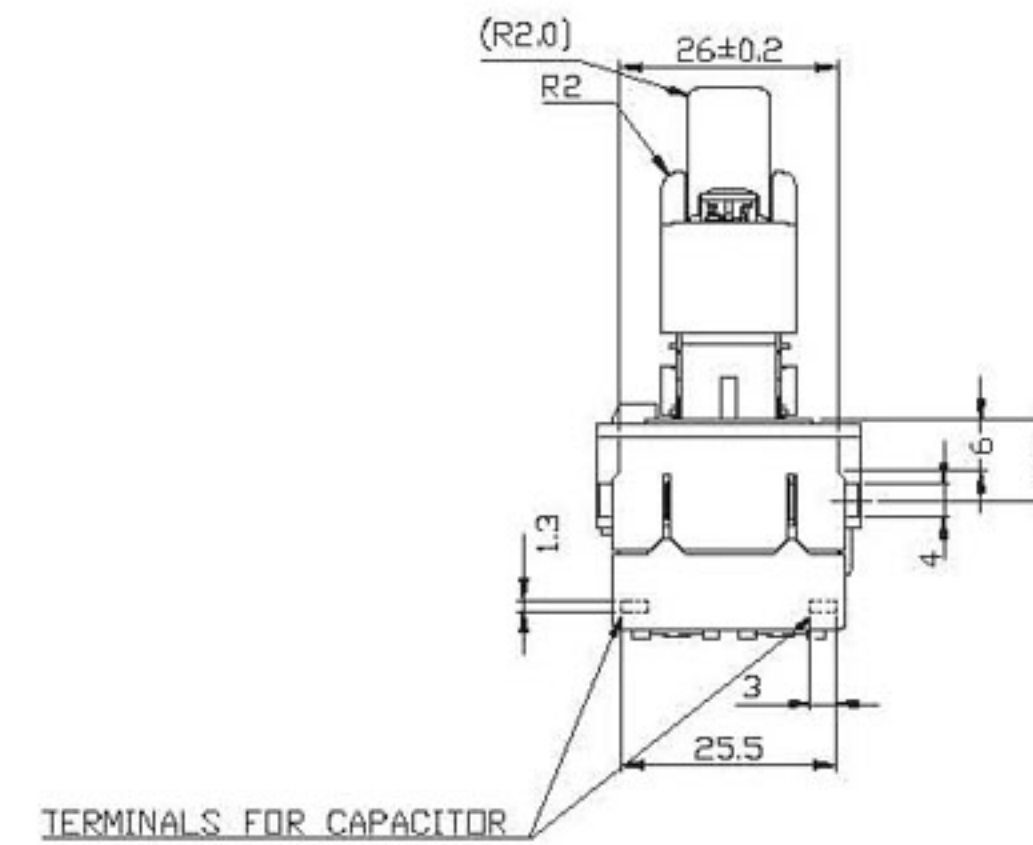
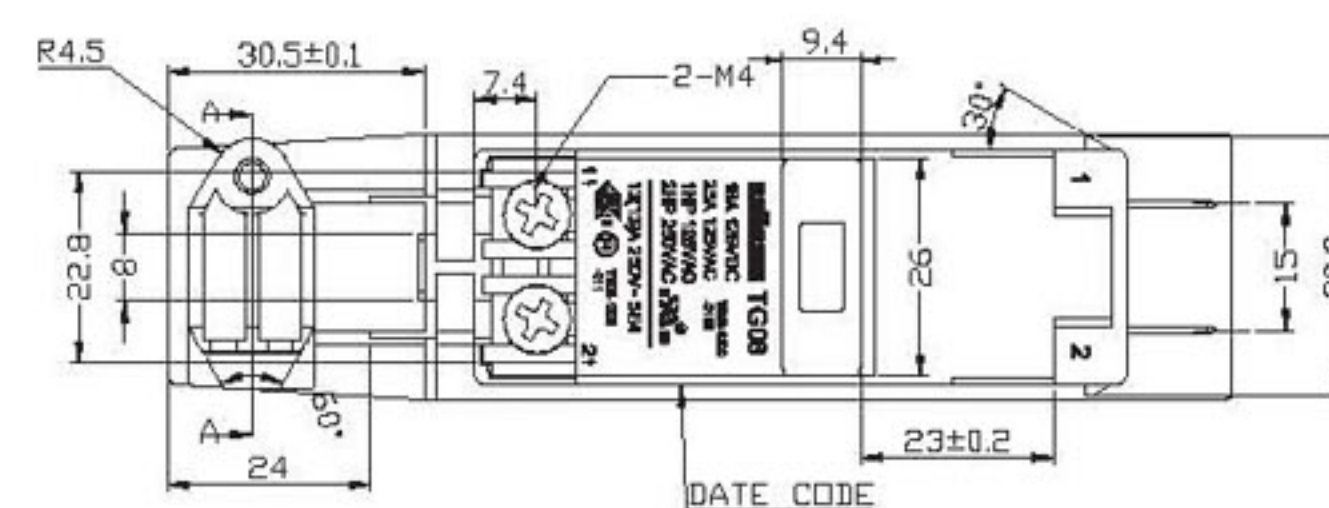
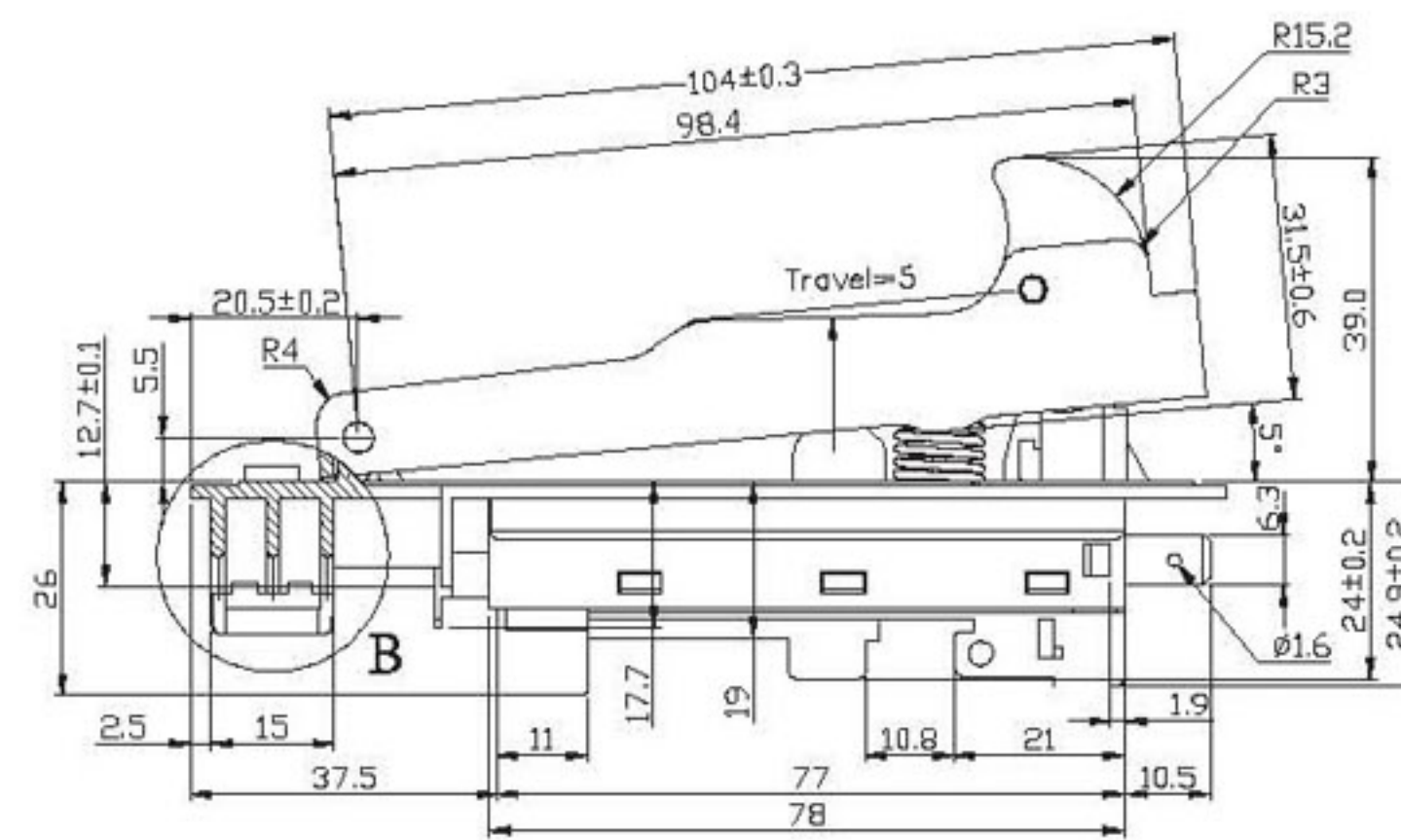
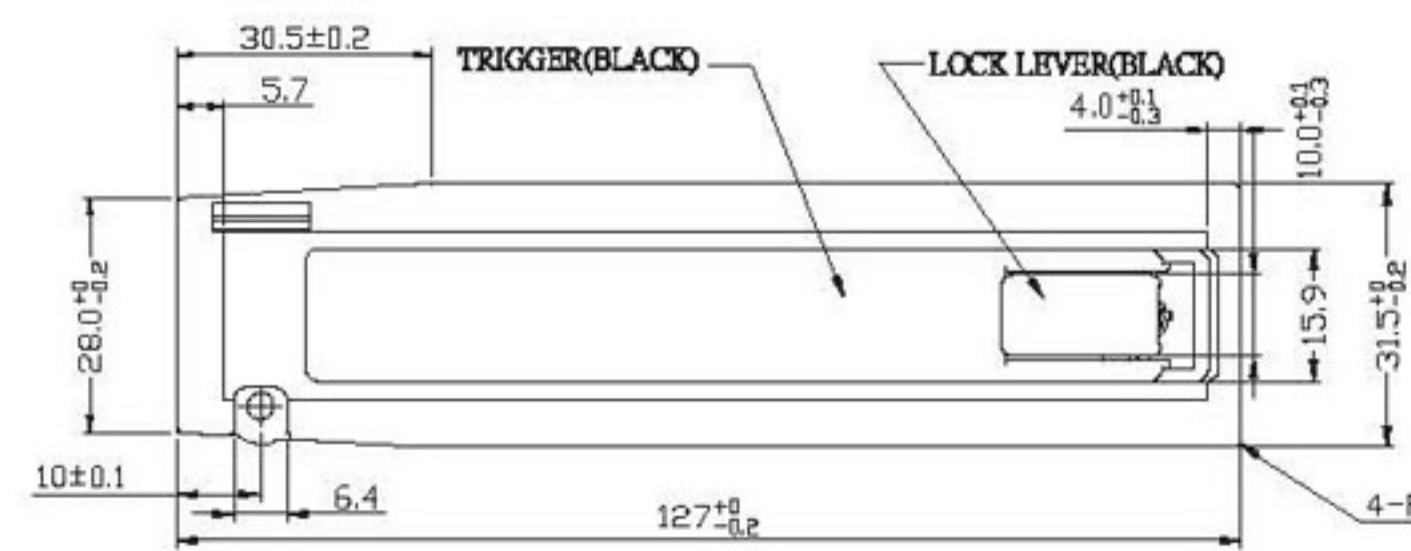
Dimensions in mm



DETAIL "B" 2:1



SECTION A-A



TERMINALS FOR CAPACITOR