

**Preliminary Specification  
of  
LCD Module Type  
Model No.: VXT280TQI-03P**

**1. General Description**

- 2.8", 240 x RGB x 320 dots, 262k colors, transmissive, TFT LCD module.
- Viewing angle: 12 o'clock.
- Driving IC: ILI9341 TFT controller & driver or equivalent.
- Data interface: 8080 system 8/16-bits parallel interface
- Logic voltage: ~2.8V.
- White LED backlight.
- FPC connection.
- "RoHS" compliance.

**2. Mechanical Specifications**

The mechanical detail is shown in Fig. 1 and summarized in Table 1 below.

Table 1

Parameter		Specifications	Unit
Outline dimensions		50(W) x 69.2(H) x 4.2(D)	mm
TFT 240xRGBx320	Active area	43.2(W) x 57.6(H)	mm
	Display format	240 x RGB x 320	dots
	Color configuration	RGB stripe	-
	Dot pitch	0.18(H) x 0.18(V)	mm
Weight		TBD	gram

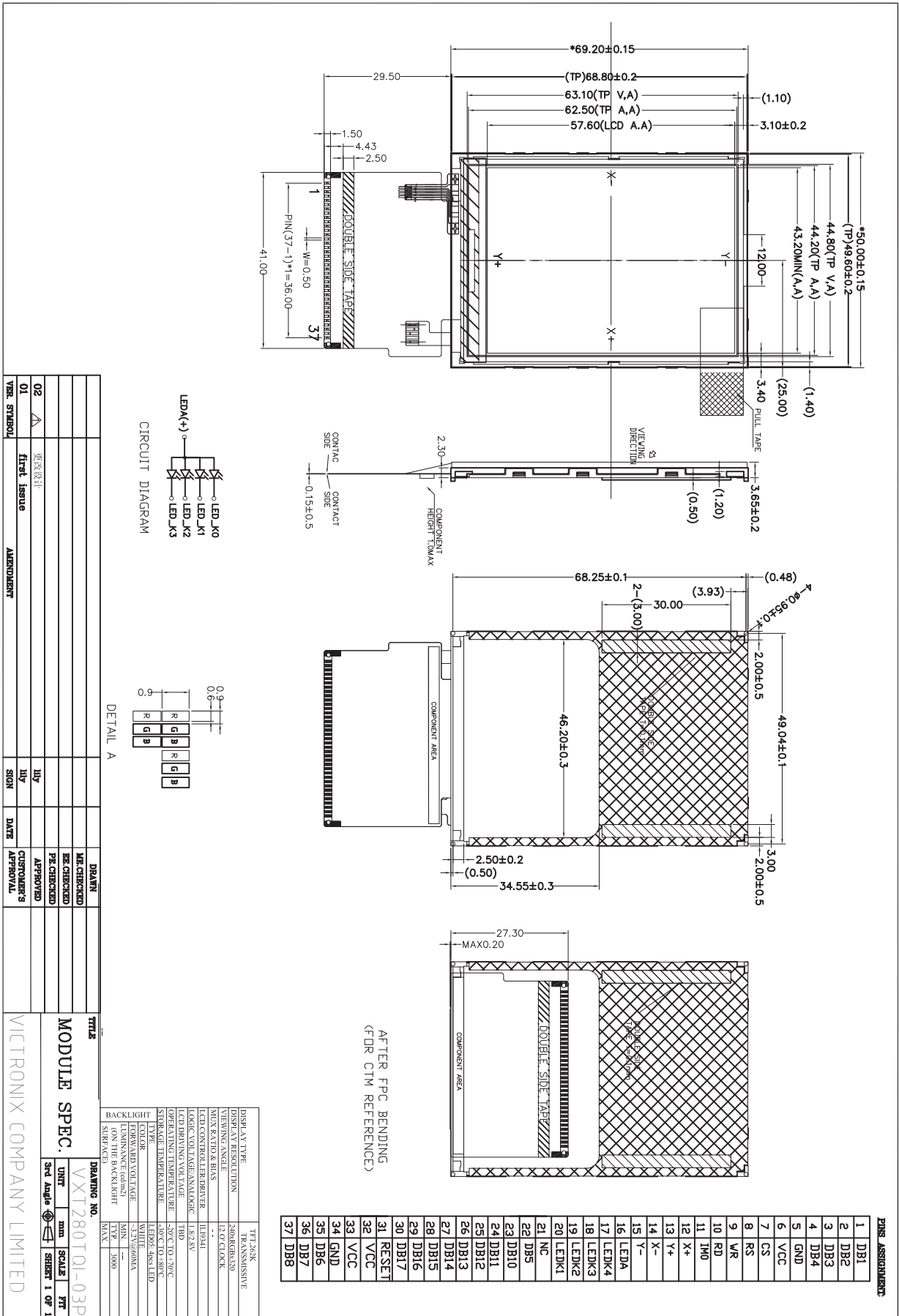


Figure 1: Module Specification

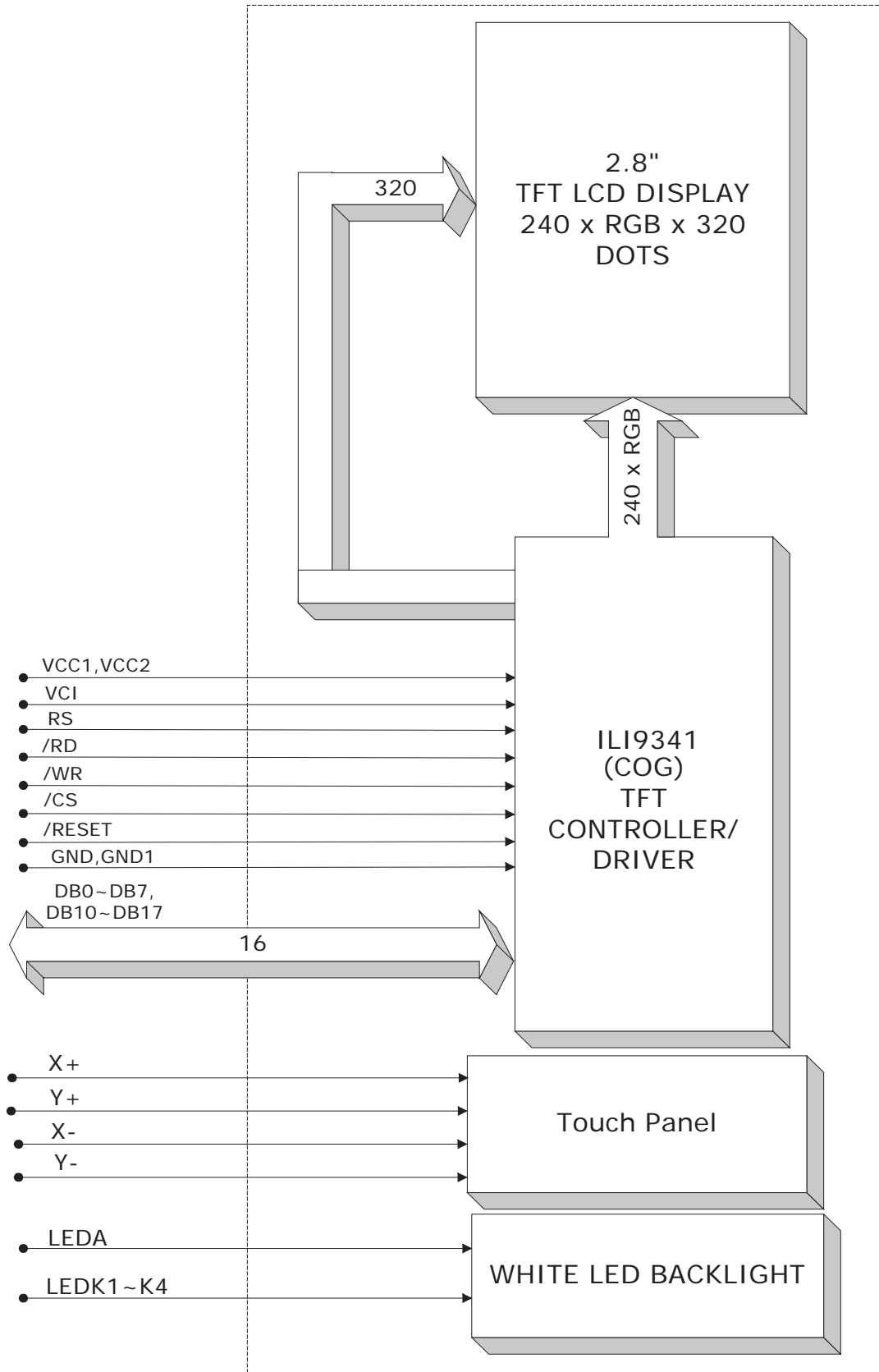


Figure 2: Block Diagram