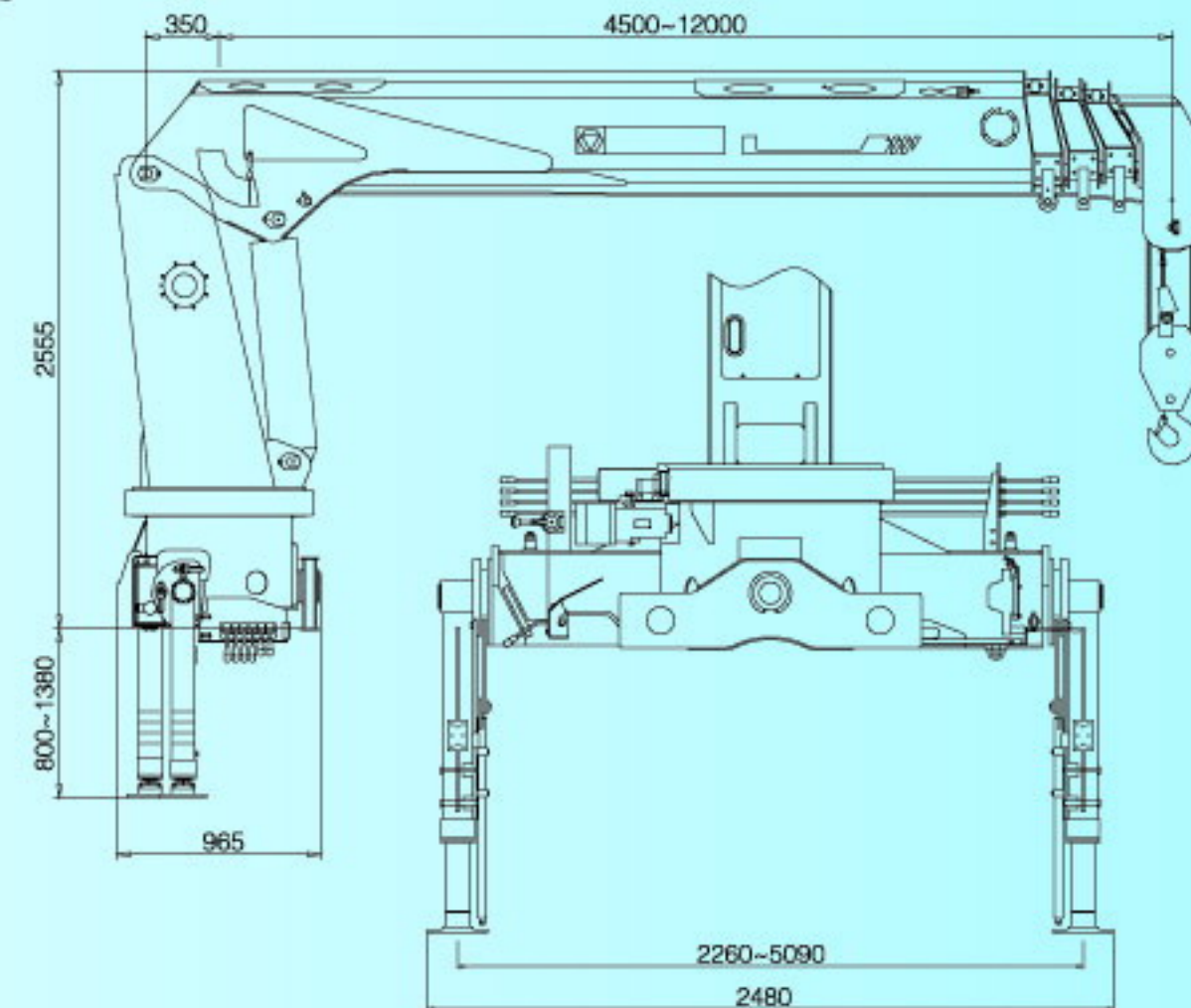


TRUCK – MOUNTED CRANE



起重机外形尺寸 CRANE OUTSIDE MEASUREMENT

单位: mm



主要特点 MAIN FEATURE

- 1、高强度钢板制造，整机重量轻，提高了起重作业性能；
- 2、全回转技术，回转高速平稳，效率高，作业方便；
- 3、液压系统关键件，采用引进技术生产制造，作业安全、可靠；
- 4、独特的浮动式三点桥结构设计，减少了对货车车架所承受的附加应力；
- 5、起重机可选装有力矩限制系统，重作业更加安全可靠。

- 1、Manufactured with strong steel plate makes lighter weight of the whole machine and higher lifting operation performance.
- 2、All rotation technology, smooth and high-speed rotary, efficient and convenient operation.
- 3、The key components of the hydraulic system are manufactured by introduce new technology which makes the operation's safety and reliability.
- 4、The unique design of three-floating bridge structure reduces the stress which equipment added to truck frame.
- 5、The crane could equipped with a optional torque limit system so that the lifting operation are more safe and reliable.

SQ10SK3Q起重机主要技术参数

MAIN SPECIFICATION

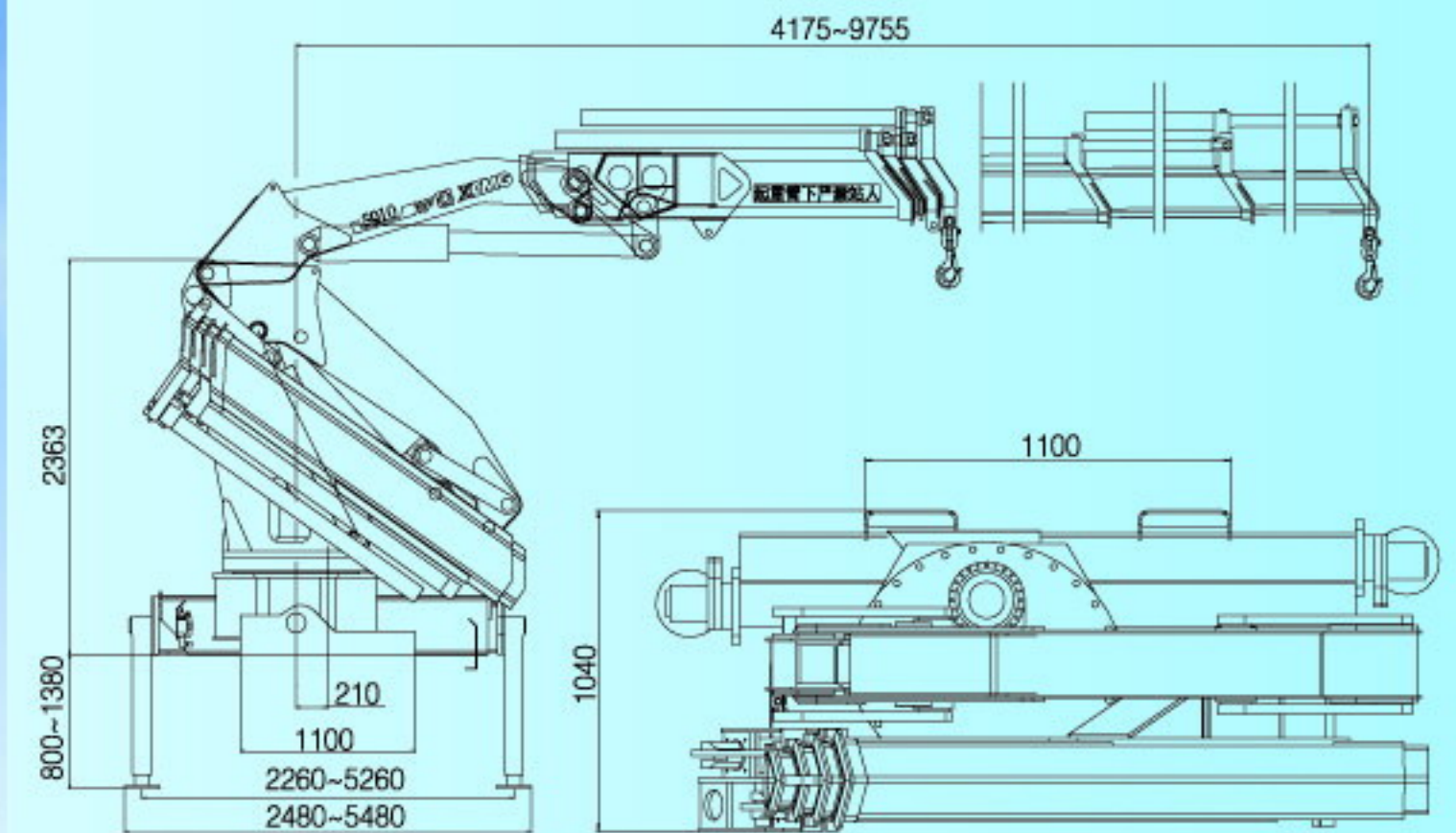
型号	Model	SQ10SK3Q	单位unit
最大起升质量	Max Lifting Capacity	10000	kg
最大起重力矩	Max Lifting Moment	25	T.M
推荐功率	Recommend Power	28	kw
液压系统最大流量	Max Oil Flow Of Hydraulic System	63	L/min
液压系统额定压力	Rated Pressure Of Hydraulic System	26	Mpa
油箱容积	Oil Tank Capacity	180	L
回转角度	Rotation Angle	全回转	All Rotation
起重机自重	Crane Weight	3800	kg
安装空间	Installation Space	1150	mm
起升质量/工作幅度	Lifting Capacity/Working Radius	10000/2.50	kg/m
		5500/4.50	
		3200/7.00	
		2300/9.00	
		1500/12.00	
最大工作幅度	Max Working Radius	12.00	m
最大起升高度	Max Working Height	13.80	m

上述参数为改装后参数，更多配置底盘请咨询当地销售经理。
The above parameters are for refitted models, for more chassis options for refitting sake please consult the local sales manager.



起重机外形尺寸 CRANE OUTSIDE MEASUREMENT

单位: mm



主要特点 MAIN FEATURE

- 1、高强度钢板制造，不仅整机重量轻，而且提高了起重作业性能；
- 2、全回转技术，回转高速平稳、效率高、作业方便；
- 3、液压系统关键件，采用引进技术生产制造，作业安全、可靠；
- 4、模块化设计，可与多种起重附具匹配，扩展了作业功能；并具有多种操作形式的配置，选装高位座椅操作，扩大操作者视野。

- 1、Manufactured with strong steel plate makes lighter weight of the whole machine and higher lifting operation performance.
- 2、All rotation technology, smooth and high-speed rotary, efficient and convenient operation.
- 3、The key components of the hydraulic system are manufactured by introduce new technology which makes the operation's safety and reliability.
- 4、Modular design, with operations in the form of a variety of configurations, such as the optional high seat operation, which could expand the operator's visual field.

SQ10ZK3Q 起重机主要技术参数

MAIN SPECIFICATION

型号	Model	SQ10ZK3Q	单位unit
最大起升质量	Max Lifting Capacity	10000	kg
最大起重力矩	Max Lifting Moment	20	T.M
推荐功率	Recommend Power	28	kw
液压系统最大流量	Max Oil Flow Of Hydraulic System	40	L/min
液压系统额定压力	Rated Pressure Of Hydraulic System	28	Mpa
油箱容积	Oil Tank Capacity	140	L
回转角度	Rotation Angle	全回转	All Rotation
起重机自重	Crane Weight	3477	kg
安装空间	Installation Space	1150	mm
起升质量/工作幅度	Lifting Capacity/Working Radius	10000/2	kg/m
		4600/4.17	
		3050/5.99	
		2280/7.87	
		1700/9.75	
最大工作幅度	Max Working Radius	9.755	m
最大起升高度	Max Working Height	12.50	m

上述参数为改装后参数，更多配置底盘请咨询当地销售经理。
The above parameters are for refitted models, for more chassis options for refitting sake please consult the local sales manager.