

-Materials:

- .Plunger: Brass Au over Ni
- .Barrel: Brass Au over Ni
- .Spring: SUS surface treatment

-Mechanical:

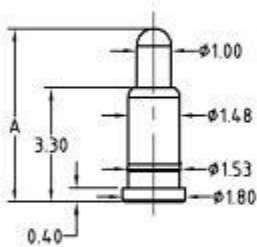
- .Full stroke: 1.40mm
- .Life test: 50,000 cycles

-Electrical:

- .Contact resistance: 50 milliohm Max.

G-Barrel	G-Plunger
1-0.125um	1-0.125um
2-0.25um	2-0.25um
3-0.375um	3-0.375um
4-0.5um	4-0.5um
5-0.75um	5-0.75um
...	...

MF100 - SS GG

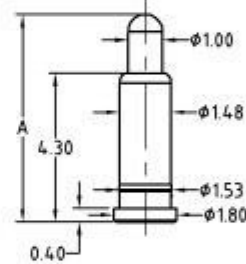


Initial height -A	SS- code
4.5mm	11
5.0mm	21

working stroke	spring force
1.0mm	70g

Rated current	Rated voltage
1A Max.	12V

MF200 - SS GG



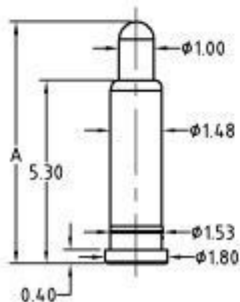
Initial height -A	SS- code
5.5mm	11
6.0mm	21

working stroke	spring force
1.0mm	70g

Rated current	Rated voltage
3A Max.	12V

※Cannot be used as the charging

MF300 - SS GG

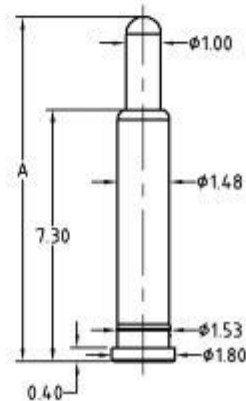


Initial height -A	SS- code
6.5mm	11
7.0mm	21
7.5mm	31
8.0mm	41

working stroke	spring force
1.0mm	70g

Rated current	Rated voltage
3A Max.	12V

MF501 - SS GG

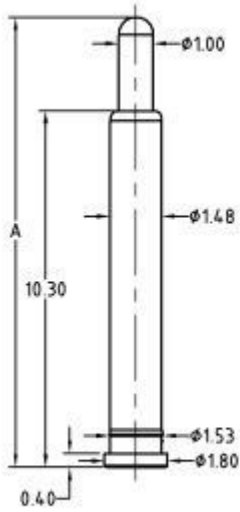


Initial height -A	SS- code
9.0mm	11
10.0mm	21
11.0mm	31

working stroke	spring force
1.0mm	70g

Rated current	Rated voltage
3A Max.	12V

MF502 - SS GG

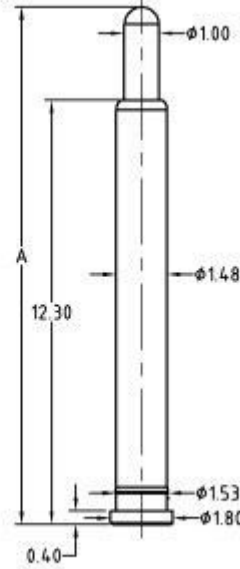


Initial height -A	SS- code
12.0mm	11
13.0mm	21
14.0mm	31

working stroke	spring force
1.0mm	70g

Rated current	Rated voltage
3A Max.	12V

MF503 - SS GG



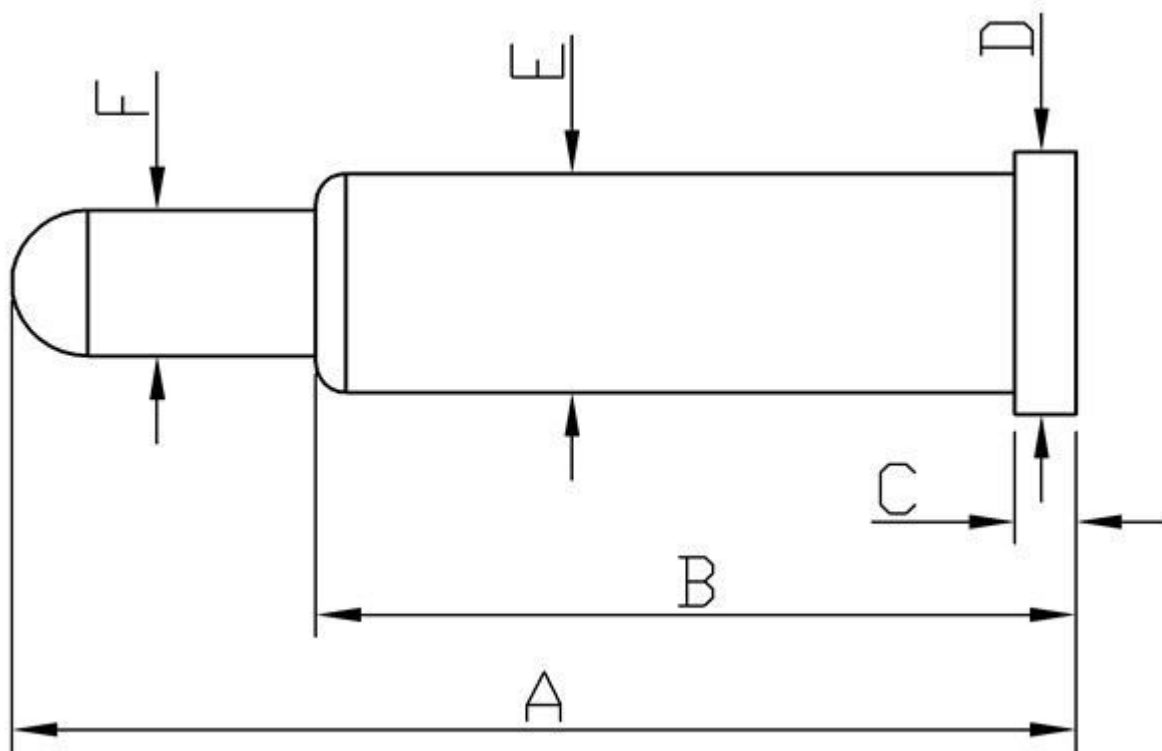
Initial height -A	SS- code
15.0mm	11

working stroke	spring force
1.0mm	70g

Rated current	Rated voltage
3A Max.	12V

Below is custom pogo pin size for customer option:

- Barrel & plunger: Brass/Be-Cu/Phosphor bronze
- Plating: Gold plated
- Spring: SUS/SWP
- Life test: 100,000~1000,000 cycles
- Rated current & voltage: DC12V; 1A~15A,
- Contact resistance: 30 mOhm Max.



Part NO.	A	B	C	D	E	F	Work Stroke	Spring force (g)
BF00111	4.3	3.0	0.5	1.8	1.6	0.9	1.0	90.0
BF00217	15.2	13.7	0.0	3.1	1.5	0.9	0.9	100.0
BF00218	15.2	13.7	0.6	3.1	1.6	0.9	0.9	100.0
BF00261	16.5	15.0	0.6	3.1	1.5	0.9	0.9	100.0
BF00511	4.0	2.5	0.5	2.0	1.5	0.9	0.8	120.0
BF00611	3.0	2.0	0.5	2.0	1.5	0.9	0.7	90.0
BF00811	5.5	4.5	0.5	1.8	1.5	0.9	0.8	120.0
BF01011	4.2	3.2	/	/	1.0	0.5	0.8	40.0
BF01211	17.0	14.7	/	/	2.0	1.4	1.5	130.0
BF01411	3.5	2.5	/	/		1.1	0.5	60.0
BF01811	3.0	2.0	0.4	1.8	1.5	1.1	0.7	110.0
BF01911	4.4	3.8	0.4	1.8	1.6	1.1	0.6	150.0
BF02011	6.0	4.0	0.5	2.0	1.5	0.9	1.0	80.0

BF02211	8.0	5.5	0.7	1.8	1.6	1.0	1.5	130.0
BF02811	16.5	13.0	/	/	2.0	1.4	1.0	150.0
BF03511	5.4	3.9	0.7	1.8	1.5	1.0	1.0	120.0
BF04312	12.6	11.1	0.9	1.8	1.5	0.0	1.0	60.0
BF04320	20.6	19.1	0.9	1.8	1.5	0.9	1.0	30.0
BF04511	6.8	5.4	0.6	1.9	1.5	0.9	0.9	100.0
BF04711	5.0	3.6	0.5	1.8	1.5	1.0	1.1	110.0
BF04811	7.0	5.0	0.5	1.8	1.5	1.0	0.7	50.0
BF04911	2.3	1.6	0.4	1.5	1.3	0.9	0.6	70.0
BF05211	7.9	5.7	0.6	1.8	1.5	0.9	1.2	60.0
BF05411	4.0	2.8	0.2	2.0	1.6	1.0	1.0	110.0
BF05711	5.5	3.6	0.5	2.3	1.5	1.0	0.9	45.0
BF05721	4.5	3.0	0.5	2.3	1.5	1.0	0.5	45.0
BF05811	14.0	9.0	/	/	1.5	1.0	3.5	120.0
BF06311	4.0	2.7	0.4	2.5	1.5	0.9	1.0	80.0
BF06911	7.3	5.3	0.6	2.2	1.3	0.8	0.8	95.0
BF08211	2.9	1.7	0.4	2.0	1.5	0.9	0.9	80.0
BF08311	2.3	1.5	0.3	1.4	1.3	0.8	0.1	30.0
BF08312	2.3	1.5	0.3	1.4	1.3	0.8	0.1	30.0
BF08511	3.6	2.3	0.3	2.0	1.3	0.8	0.6	60.0
BF08811	3.5	2.5	0.4	1.7	1.5	0.9	0.5	45.0
BF09511	4.5	3.0	0.5	2.3	1.5	1.0	0.5	45.0
BF09611	4.3	3.3	0.5	3.5	2.5	2.0	1.0	300.0
BF09711	3.3	2.0	0.3	2.0	1.3	0.8	0.5	95.0
BF09811	6.0	4.5	1.0	1.8	1.4	0.9	0.5	25.0
BF10001	5.0	3.3	0.4	1.8	1.5	1.0	1.0	30.0
BF10411	3.4	2.5	0.4	1.8	1.5	1.0	0.8	110.0
BF10511	4.0	3.0	0.4	1.8	1.5	1.0	0.5	60.0
BF10711	3.7	2.4	0.4	1.8	1.5	1.0	0.7	110.0

BF10811	7.1	5.1	0.5	1.8	1.5	1.0	1.5	120.0
BF11611	4.7	4.0	0.3	1.9	1.6	1.0	0.7	88.0
BF12711	4.3	3.0	/	/	1.5	0.9	0.8	100.0
BF12821	9.5	7.0	1.5	2.0	1.5	0.9	1.5	125.0
BF14611	6.5	3.5	0.4	2.0	1.5	1.0	2.0	60.0
BF15311	8.3	5.2	0.8	3.5	2.3	1.1	0.7	70.0
BF15711	10.5	4.5	/	/	1.5	0.9	1.0	100.0
BF15811	5.0	3.6	0.4	1.8	1.5	1.0	1.0	120.0
BF16511	2.5	1.9	0.7	1.8	1.6	1.0	0.6	50.0
BF16611	4.5	3.2	0.7	1.8	1.6	1.0	1.3	90.0
BF19101	5.5	4.0	0.8	2.0	1.5	0.9	0.7	80.0
BF19401	2.5	1.9	0.4	1.8	1.5	1.0	0.5	50.0
BF19701	9.5	7.0	/	/	3.0	2.3	1.5	180.0
BF19901	11.0	8.0	0.4	1.8	1.5	1.0	1.0	90.0
BF20201	3.6	3.1	0.4	1.8	1.5	1.0	1.0	120.0
BF20401	4.5	2.7	0.4	1.8	2.0	1.1	1.0	60.0