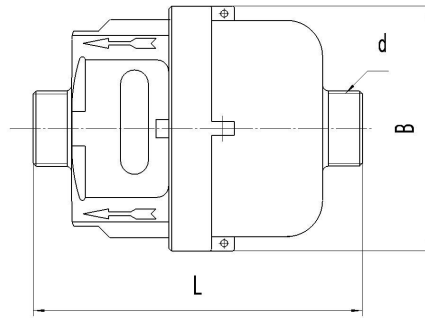


## LXHY-15~20 ROTARY PISTON LIQUID SEALED WATER METER



This type of water meter can be used for a remote reading transmission system as equipped with a built-in sensor.

### Feature:

- Volumetric rotary piston principle of measurement;
- LXHY-15 ~ 20 is no location limitation for installation. Accuracy is not to be affected wherever installed at a horizontal, vertical or inclined pipeline;
- Register is sealed with a special liquid to keep a clear reading in long term service;
- Mechanism use of high-quality material to ensure a stable characteristic;
- Accurate measurement with conformity to ISO 4064 class C.

### Note:

Technical data conform to International Standard ISO 4064.

### Application:

Measuring the volume of cold portable water passing through the pipeline.

### MAIN TECHNICAL SPECIFICATIONS

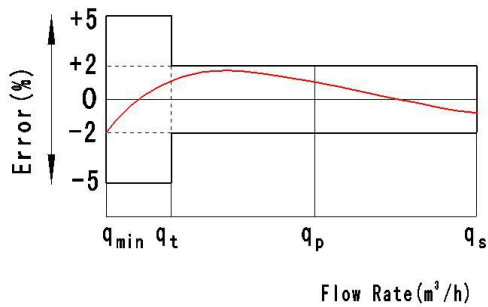
Type	Size (mm)	Class	$q_s$	$q_p$	$q_t$	$q_{min}$	Minimum Reading	Maximum Reading
			Overload Flow	Permanent Flow	Transitional Flow	Minimum Flow		
			m <sup>3</sup> /h		L/h		m <sup>3</sup>	
LXHY-15	15	C	3	1.5	22.5	15	0.0001	9,999
LXHY-20	20	C	5	2.5	37.5	25	0.0001	9,999

### DIMENSIONS

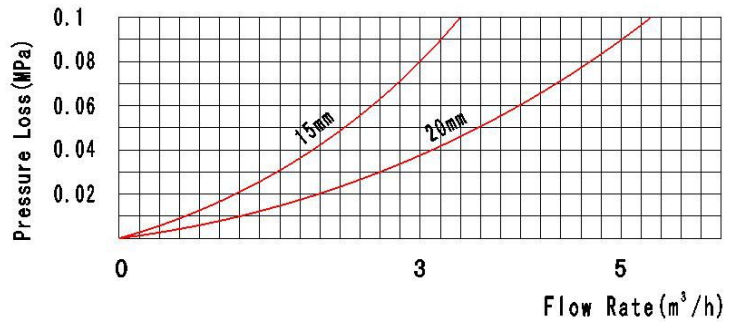
Type	Size	L Length	B Width	d Connecting Thread
	mm			
LXHY-15	15	115	85.2	G3/4B
LXHY-20	20	130	85.2	G1B

## LXHY-15~20 ROTARY PISTON LIQUID SEALED WATER METER

**Flow Error Curve**



**Pressure Loss Curve**



### LXHY-15~20 ROTARY PISTON LIQUID SEALED WATER METER

Code	Description	Material	QT
1	Hinge Pin	Brass	1
2	Lid	HDPE	1
3	Sealing Wire &	Brass & Lead	1
4	Upper Body	Brass	1
5	Slide	FRABS	1
6	Spring	Stainless steel	1
7	Clamp Support	FRABS	1
8	Register	Engineering	1
9	O-ring	Rubber	1
10	Reducing Gear	Engineering Plastic	1
11	Shaft	POM	1
12	Cover	Polystyrene	1
13	Gearing	Nylon	1
14	Piston	Assembly	1
15	Bushing	Nylon	1
16	Separate Plate	POM	1
17	Measuring	Polystyrene	1
18	Strainer	ABS	1
19	Check Valve	As	1
20	O-ring	Rubber	1
21	Lower Body	Brass	1
22	Coupling Gasket	Rubber	2
23	Coupling Tail	Brass	2
24	Coupling Nut	Brass	2

