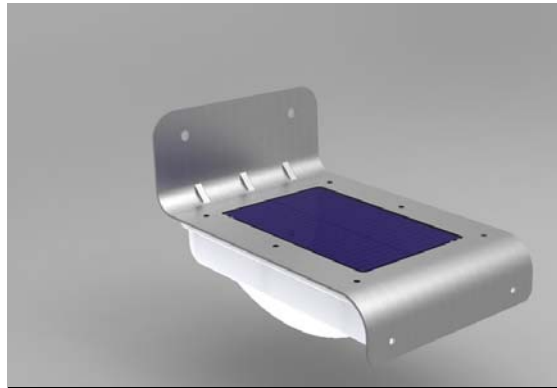


SPK ELECTRONICS CO., LTD.

Solar Motion Light

MODEL:SPK-SOLML1P

Great useful lighting for your garden,
street, aisle etc...
charge by free sunlight and light in dark
when people near!!
sensitive motion sensor , save energy !
Green power, Green lighting
Metal body, never fade
100% waterproof and heatproof.



Specification:

1. Solar panel: 0.55W, 17% efficiency
2. Li-ion battery: 3.7V 800mAh
3. Switch inside for saving power during shipment
4. LED: 16pcs, SMD 3528
5. Lumens: 100lm
6. LED span life: 50,000Hrs
7. Solar charging time: 8Hrs
8. Lighting mode: Dark/DIM/bright, DIM: weak lighting for saving power; Bright: motion activate for lighting
9. Auto identify day or night
10. Protect function: Over charging, over discharging, over current, short circuit
11. Advantage for electronic:
 - a) Constant voltage 4.2V charging type
 - b) Input current limited
 - c) Output current limited

Add : 10F,NO.510,SEC.5,CHUNG HSIAO E. RD, TAIPEI, TAIWAN

Tel : 02-2346-2323

Fax : 02-2346-3939

E-mail : spktw@ms34.hinet.net WEB:<http://www.spkecl.com>

SPK ELECTRONICS CO., LTD.

- d) Backflow current proof for solar cell
 - e) High efficiency
 - f) Famous brand component: MURATA, PANASONIC, ST, TOSHIBA, ETC
12. Li-ion battery span life: 500 circles
 13. solar panel span life: more than 5 years
 14. PIR information: distance: 5m, angle: 120° , power consumption: 50uA