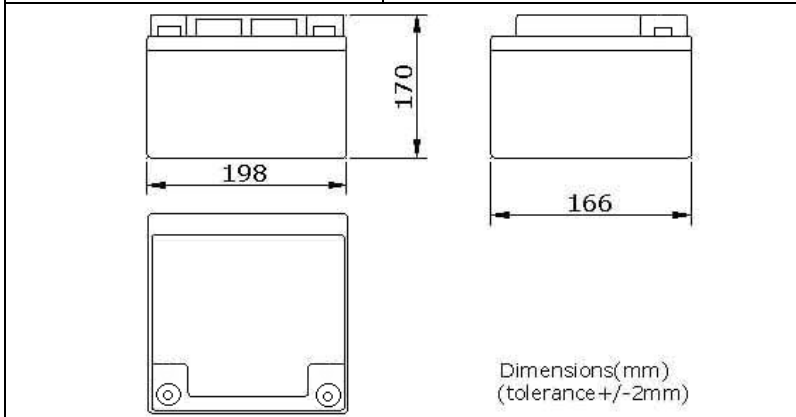


UNIPOWER

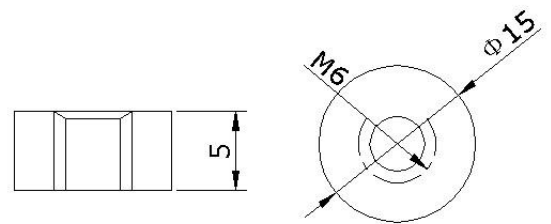
GEL38-12(12V38Ah)

PHYSICAL SPECIFICATION

Nominal Voltage Nominal Capacity (10HR)		12V 38Ah
Dimension	Length	198±2mm (7.80 inches)
	Width	166±2mm (6.53 inches)
	Container Height	170±2mm (6.69 inches)
	Total Height	170±2mm (6.69 inches)
Weight		Approx. 13.1Kg (28.85lbs)
Standard Terminal		Bolt-and-nut lead terminal Bolt Type: M6



Bolt-and-nut terminal
Bolt Type: M6



(in mm)

ELECTRICAL SPECIFICATION

Characteristics									
Capacity	<table border="1"> <tr> <td>10 hour rate (3.8A)</td> <td>38Ah</td> </tr> <tr> <td>5 hour rate (6.46A)</td> <td>32.3Ah</td> </tr> <tr> <td>3 hour rate (9.5A)</td> <td>28.5Ah</td> </tr> <tr> <td>1 hour rate (22.8A)</td> <td>22.8Ah</td> </tr> </table>	10 hour rate (3.8A)	38Ah	5 hour rate (6.46A)	32.3Ah	3 hour rate (9.5A)	28.5Ah	1 hour rate (22.8A)	22.8Ah
10 hour rate (3.8A)	38Ah								
5 hour rate (6.46A)	32.3Ah								
3 hour rate (9.5A)	28.5Ah								
1 hour rate (22.8A)	22.8Ah								
Capacity affected by temperature	<table border="1"> <tr> <td>40°C (104 °F)</td> <td>102%</td> </tr> <tr> <td>25°C (77 °F)</td> <td>100%</td> </tr> <tr> <td>0°C (32 °F)</td> <td>85%</td> </tr> </table>	40°C (104 °F)	102%	25°C (77 °F)	100%	0°C (32 °F)	85%		
40°C (104 °F)	102%								
25°C (77 °F)	100%								
0°C (32 °F)	85%								
Designed life	≥720 Cycles @ 50% DOD (25°C)								
Internal Resistance	Full charged battery (25°C, 77 °F) 10.1mΩ								
Constant Voltage Charge	Cycle	Initial Charging Current less than 9.5A Voltage 14.1~14.4V at 25°C (77 °F) Temperature Coefficient -5mV/°C							
	Standby	No limit on Initial Charging Current Voltage 13.5~13.8V at 25°C (77 °F) Temperature Coefficient -3.3mV/°C							

Discharge curves @ 25°C (77 ° F)

