

## C500 Series 2/2 Way, C5003 Series 3/2 Way Micro Electric Ball Valve (Open/Close Type)

### Features

1. General purpose and exclusively used for HVAC system
2. Valve body: Cast Brass (code: T)
3. Seal material : PTFE(code: P)
4. No limit for flow direction of medium
5. Applicable ambient temp: -15~75°C
6. 90° actuation time: AC/15S, DC/8S
7. No manual device, valve position non-visible, no signal output
8. Max pressure tolerance: 1.6Mpa
9. Leakage: Zero
10. Flow rate: After fully open, flow rate is equivalent to the same specified pipe
11. Equipped with position limit switch, fully open or fully close, power off immediately, energy-saving, safety guaranteed, long life span.
12. Voltage: AC220/AC110/AC24/AC12V 50/60Hz, tolerance ±10%, DC24 ±5%, customization accepted

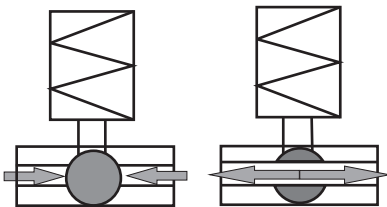


C500-20III02

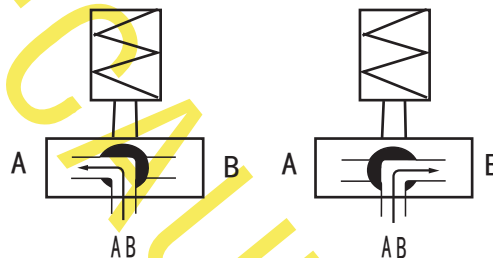


C5003-15III02-T

### Action Diagram-- 2 Way



### Action Diagram – 3 Way



Specification: when valve core is turning, always only one port is flowing ,port A or port B



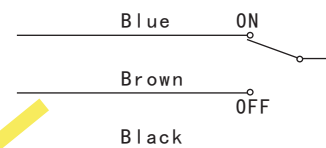
C5003-15III02-T (Side T)

### Parameter and Dimension

Unit:mm

Order Model	Connection Thread ZG	Orifice mm	Kv Value m <sup>3</sup> /h	Liquid, Gas		Applicable Medium Temp °C	Protection Grade	Power	Dimension	
				Min Pressure bar	Max Pressure bar				L×W×H (A×B×H)	W. T. kg
C500-15	1/2"	15	20	0	16	-9 150	IP 54	AC: 5VA DC: 3W	60×90×125	0.52
C500-20	3/4"	20	38						68×90×130	0.59
C500-25	1"	25	72						85×90×145	0.86
C500-32	1 1/4"	25	72						77×60×145	0.80
C5003-15	1/2"	15	20						60×90×150	0.55
C5003-20	3/4"	20	38						68×90×160	0.68
C5003-25	1"	25	72						85×90×170	1.00

### Wiring Diagram AC/DC



Note:1. For concrete wiring, please subject to the mark on the product you've received  
2. or B type drive wiring diagram, please refer to the manual  
3. C500-32 is reducing ball valve, real diameter is DN25

### Special Configuration

C500 (5003) -b: B type drive(actuator), multi-valves parallel connection which is controlled by one temp controller

Note: normal actuator cannot control multi-valve in parallel, otherwise cannot work synchronously. If parallel control is required, only B type drive( actuator) can be selected.