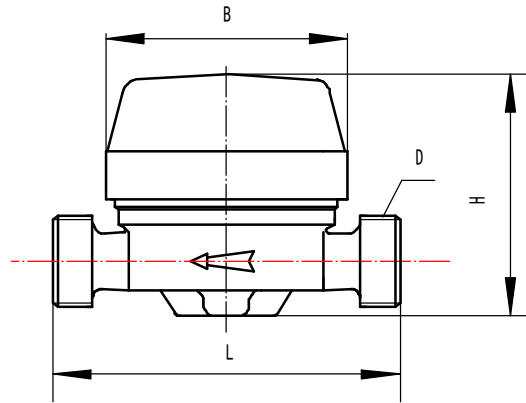


## LXDG-15~25 Single-jet, Vane Wheel, Dry-Dial Water Meter (Page1/2)



### Application:

--Measuring the volume of cold potable water passing through the pipeline.

### Feature:

- Single-jet, dry-dial, free rotating register, small in size and light in weight;
- Magnetic drive, Resistance to exterior magnet interference,
- keep the reading clear in a long term service;

### Note:

- Measuring accuracy conform to ISO 4064 class B standard..
- Available with different length on request. Available in hot water meter on request.

### Working condition:

- Water temperature:  $0.1^{\circ}\text{C} \sim 40^{\circ}\text{C}$  ( $0.1^{\circ}\text{C} \sim 90^{\circ}\text{C}$  for hot water meter)
- Water pressure :  $\leq 1.0\text{Mpa}$

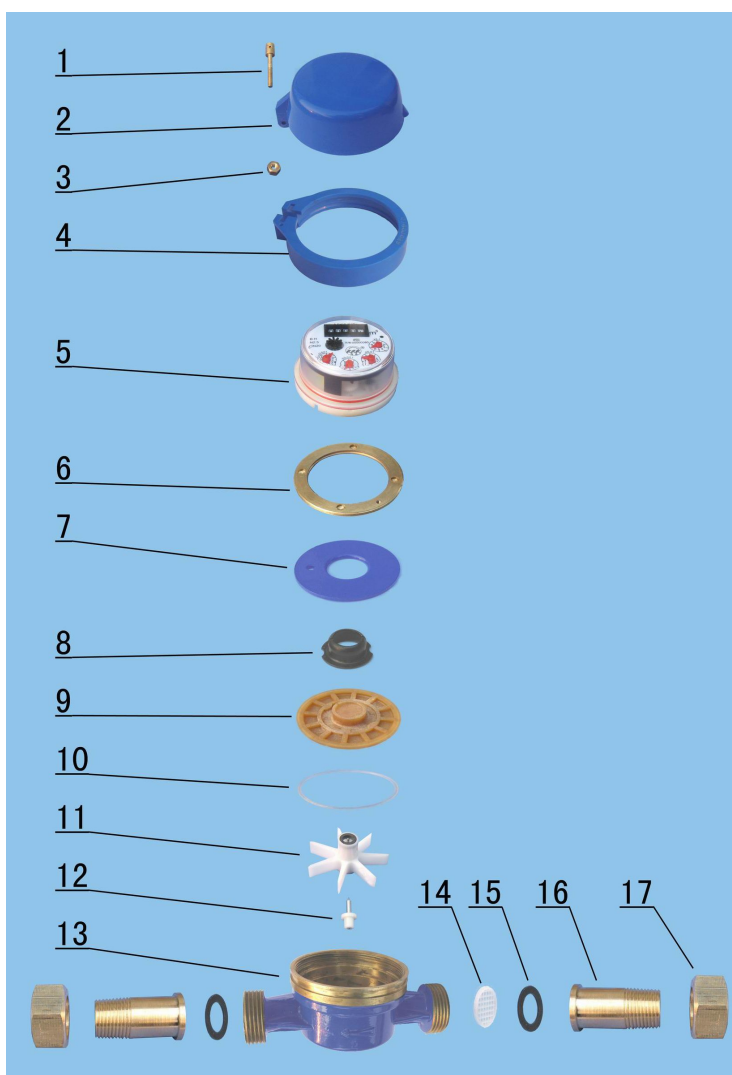
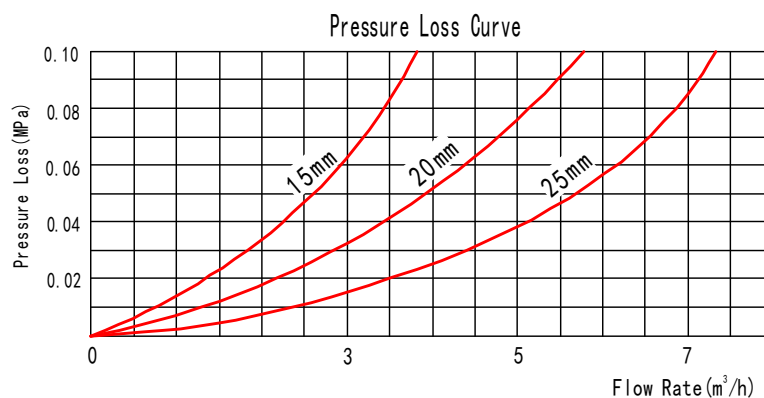
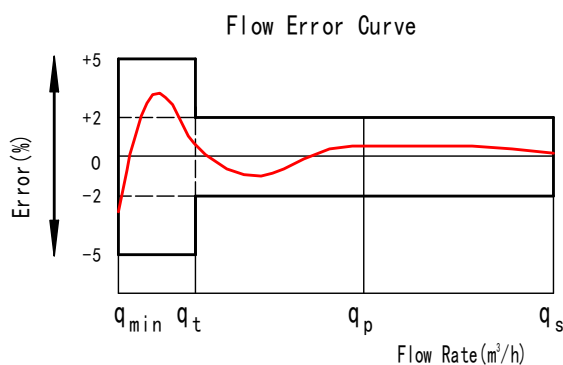
### Maximum Permissible Error:

- (1) in the lower zone from  $q_{\min}$  inclusive up to but excluding  $q_t$  is  $\pm 5\%$
  - (2) in the upper zone from  $q_t$  inclusive up to and including  $q_s$  is  $\pm 2\%$
- Hot water meter  $\pm 3\%$

### MAIN TECHNICAL SPECIFICATIONS

Type	Size (mm)	Class	$q_s$	$q_p$	$q_t$	$q_{\min}$	Minimum Reading	Maximum Reading
			Overload Flow	Permanent Flow	Transitional Flow	Minimum Flow		
			$\text{m}^3/\text{h}$		$\text{L/h}$		$\text{m}^3$	
LXDG-15	15	B	3	1.5	120	30	0.00005	99,999
LXDG-20	20	B	5	2.5	200	50	0.00005	99,999
LXDG-25A	25	B	7	3.5	280	70	0.00005	99,999

Type	Size	L Length	B Width	H Height	D Connecting Thread
	mm				
LXDG-15	15	110	82	89	G3/4B
LXDG-20	20	130	82	89	G1B
LXDG-25	25	130	82	89	G1 1/4B



### LXDG-15A~25A SINGLE-JET, VANE WHEEL, DRY-DIAL WATER METER

Code	Description	Material	QTY
1	Hinge Bolt	Brass	1
2	Lid	ABS	1
3	Hinge Nut	Brass	1
4	Retaining Ring	ABS	1
5	Sealed Register	Assembly	1
6	Fixing Ring	Brass	1
7	Enforcing Plate	Iron	1
8	Magnetic Shield Ring	Iron	1
9	Separating Plate	PPO	1
10	O-ring	Silicon Rubber	1
11	Complete Turbine	Assembly	1
12	Counter Pivot	Component	1
13	Body	Brass	1
14	Inlet Strainer	POM	1
15	Coupling gasket	Rubber	2
16	Coupling Tail Piece	Brass	2
17	Coupling Nut	Brass	2