

GT-201 – LTE/3G, LTE/2G, GNSS Portable Tracker with Dual-Power, APP & Web Support

RoHS
Compliant



17000mAh)



helpYou24

OpenGTS

GpsGate

Applications

- Fleet Management
- Vehicle security/anti-theft
- Law enforcement agent⁰, detective
- Personal care
 - Elders, children, lone workers,
 - People who exposed to potential dangers, such as social workers, standalone workers
- Amusement – worn by hunting dogs

Overview

GT-201 is designed to be a compact device with all necessary components built-inside, demonstrating ultra-high performance while keeping small dimension.

Thanks to the high efficiency GNSS and cellular modules/antennas, GT-201 could be used at almost anywhere in a vehicle, brought by people, or worn by hunting dogs.

Moreover, it's designed with the latest 4G LTE cellular technology while still providing 3G or 2G connectivity to ensure complete population and geographic coverage as LTE rolls out.

Features

- Based on latest LTE plus 3G or 2G coverage
- Sensitive GPS+GLONASS with AGPS support
- Dual-power supply
 - Internal 1540mAh Li-ion rechargeable battery
 - ◆ Built-in charging/protection circuit
 - External power (optional)
 - ◆ From 12V/24V vehicle battery with power adapter cable or
 - ◆ High-capacity battery pack (e.g.
- Compact & strong
 - No wiring-demand, all antennas built-inside
 - ◆ GPS + GLONASS antenna
 - ◆ 4G + 3G + 2G antenna
 - Drop-safe
 - Plug & play - SIM card-based auto APN select
- Worldwide LTE-band support
 - Australia/Asia
 - Europe
 - Japan
 - USA
- Easy waterproof by sealing the bottom interfaces
- Regular live position update could be enabled or disabled. Various report interval is available.
- Geo-fence with in/out options
 - Easy setting - click & drag on map
- Data buffering as there is no cellular coverage
 - Data stored in local memory
 - Automatically re-transmit as coverage is back

- Latest location query
 - A voice call will trigger a location update.²
 - APP can also send a SMS to get the location.
- Multi-language support – English, Japanese, Chinese and more

Notes.

⁰ Special functions for law enforcement agency available


¹ Fully charged new battery, 25 °C,

² It is not available now.

³ G-sensor, magnetometer support required

⁴ Smartphone required with support of Apple Push Notification Service (iOS) or GCM Service (Android)

Specifications

| | |
|------------------|---|
| Dimension (mm) | 91.5 x 54.3 x 17 |
| I/O |  <ol style="list-style-type: none"> 1. Power switch button x 1, 2. LED (blue) x 1, 3. Micro-SIM x 1, 4. Ear phone connector (Φ2.5) x 1, 5. RCY connector x 1 |
| Internal Battery | Rechargeable, Li-ion, 1500mAh; |
| Charging Time | 3 hours 20 minutes (via USB 3.0) |
| External Power | JST RCY connector - SYR-02T DC 3.4 ~ 4.4 V |
| Positioning | GPS/GLONASS/QZSS w/ AGPS |
| Cellular | <p>Model A: Telstra/APAC 4G LTE: Band 3,5,8,28; 3G WCDMA: Band 1,5,8</p> <p>Model E: EMEA, APAC 4G LTE: Band 1,3,8,20,28; 2G GPRS: Band 3,8</p> <p>Model U: AT&T, T-Mobile 4G LTE: Band 2,4,5,12; 3G WCDMA: Band 2,4</p> <p>Model V: Verizon/USA 4G LTE: Band 4,13</p> <p>Model J: Docomo/Japan 4G LTE: Band 1,18,19</p> |

| | |
|---|---|
| G-sensor | 3-axis, ±2g~±16g |
| Power Consumption (w/ Internal Battery) | OFF: 11uA Hibernate: 160uA Sleep: 300uA Idle: 2.3 ~ 3.5 mA Regular working: 50 ~ 250 mA |
| Capacity of Data Buffer (by Flash) | 16,384 records – i.e. 273 hours or 11 days if data is continuously sent once per minute |
| Watertight | Suitable protection at bottom I/O side allows it to achieve IPX6 |
| Weight | 88g |
| Temperature | Working: -20°C ~ 60 °C Storage: -20°C ~ 35 °C |

Major Functions

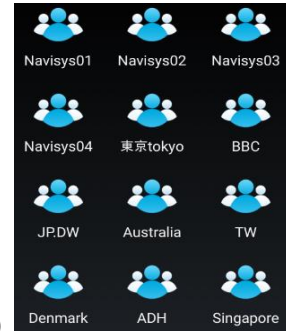
| | |
|-------------------------|---|
| Power ON/OFF | Toggle switch button by a paper clip Other power ON conditions: <ul style="list-style-type: none"> ● Connecting external power ● Disconnecting external power ● Charging internal battery |
| Blue LED | Wakeup from sleep: One blink Power ON: 5 blinks Power OFF: Steady ON then OFF (when LED OFF, power is also OFF) Charging: steady ON, done: OFF |
| Φ2.5 connector | Internal battery charging |
| RCY connector | External power input |
| Geo-Fence alert | Circular x 10, IN and/or OUT |
| Battery low alert | 15% battery capacity for both powers |
| Report interval | Time configurable when working in live/regular position report state |
| OTA (Over The Air) | Firmware upgrade Tracker setting/configuration |
| Position viewing | App, Web, SMS |
| Smart phone APP support | Android, iOS - Setup, live, history, event, etc. |

| | |
|----------------|--|
| | <ul style="list-style-type: none"> ● Push notification ● AR; Augmented reality³ ● Compass searching³ ● Navigation |
| Login account | <ul style="list-style-type: none"> ● 1 login account for each tracker ● QR-code scan login support ● Add your own login alias ● Add other trackers under your account with their permission ● No limit on number of trackers ● Organize trackers in groups ● No limit on number of groups |
| Language | English, Japanese, Chinese etc. |
| History | 30-day server log |
| Server Support | SDK for Windows/Linux OpenGTS |

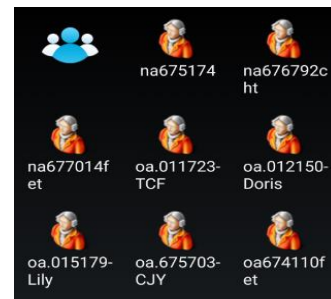
notification.

Example Application Scenario – Groups

- The helpYou24 APP allows creating unlimited number



of **groups** (or fleets) and unlimited number of **members** (vehicles) in one



group.

Smartphone APP Support

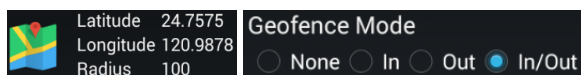
- An easy to use and powerful smartphone APP – **helpYou24** is ready for free download, for both **iOS** (8.1+) and **Android** (3.0+) devices.



- Enjoy all useful APP functions after scan the tracker's **QR-code**. Live or history at your fingertips.
- Remember to enable the **cloud notification** function - Get informed right away in case an event occurs.

Example Application Scenario – Position⁴

- Geo-fence notification informs you that your children/parents left/came home/school etc.



- Advanced scheduling provides more geo-fence reminding functions.
- Each login shows the current location of a tracker.
- Force a location update by awaking the tracker.
- If battery power goes low, one gets a battery low

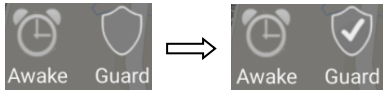
- To reorganize groups and their members by simply tapping on icons. More than 100 useful icons are at your choice for different members.
- Cloud notification for all members in all groups, one won't miss any critical information, E.g. 1237 unread alerts in following snapshot.



- There are more functions all aim to help one having one's **peace of mind**.

Example Application Scenario – Guard⁴

- It's inevitable that one has to leave her/his treasured asset (e.g. a car, a bike, motorcycles, etc.) outside. Can one get informed if someone else try to move your asset? Yes, the **Guard** function is the right answer. One or multiple people could be informed.
- Enable the **Guard** function on smartphone by just a tap on this function before you leave the asset.



- Disable the **Guard** function on smartphone by just a tap on this function before you move it by yourself.

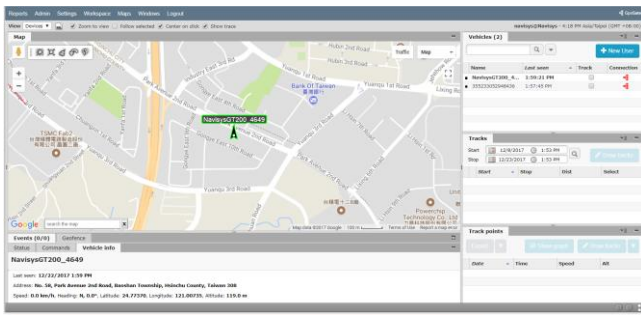
Detective/Vehicle Tracking⁴

- Move alert by cloud notification with siren
- 12/24V power adapter cable for vehicle use

OpenGTS Support



GpsGate Support



Ordering Information (sub-model list)

| | |
|---|---|
| A | Australia, Asia – Telstra; LTE+3G WCDMA |
| E | EMEA, Asia; LTE+2G GSM/GPRS/EDGE |
| J | Japan – Docomo; LTE |
| U | USA – AT&T, T-Mobile; LTE+3G WCDMA |
| V | USA – Verizon; LTE |

Standard Accessory

Charging cable -
Two ends: Ear phone connector (Φ2.5; to tracker) and type A USB connector (to power source)
Length: 50cm

Optional Accessory

Power adapter cable -
12/24, input range 5~30V, 35V transient tolerable
Output: 3.8V
Two ends: RCY connector (to tracker) and open wires (to vehicle power source)

17000 mAh battery pack with strong magnet

Package

- GT-201 body x 1
- Charging cable x 1
- Quick Start Guide x 1

*ODM is welcome.

*The final functions might be different for different customers. Please confirm your spec with our sales.

*This document is subject to change without notice.