



35W Single Output Switching Power Supply

30W SERIES

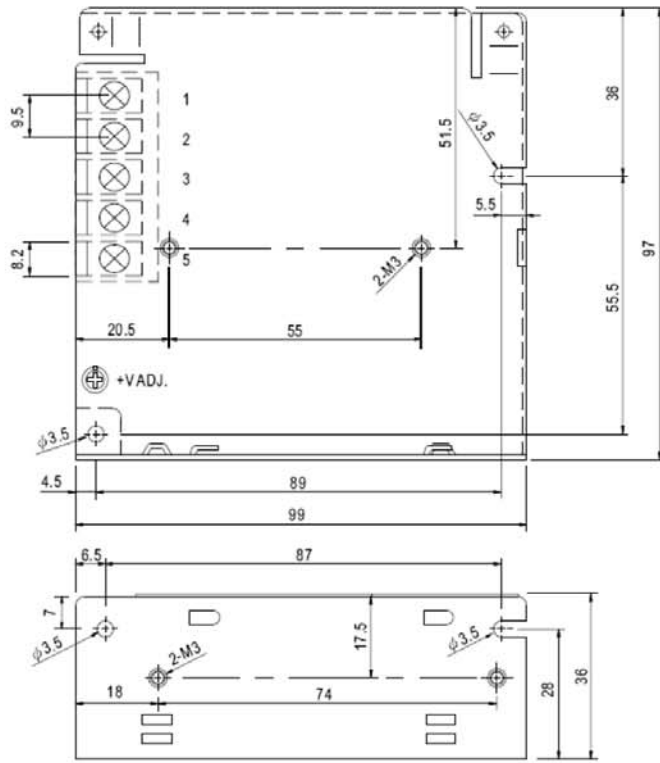
Features:

- * Universal AC input /Full range
- * Green mode design,no load<0.5W
- * High efficiency and high reliability
- * Built in EMI filter.low ripple noise
- * Protections: Short circuit / Overload / Over voltage
- * Output voltage $\pm 10\%$ adjustment
- * Cooling by free air convection
- * 100% full load burn-in test
- * 2 years warranty
- * Meet UL,CB,CE



SPECIFICATION

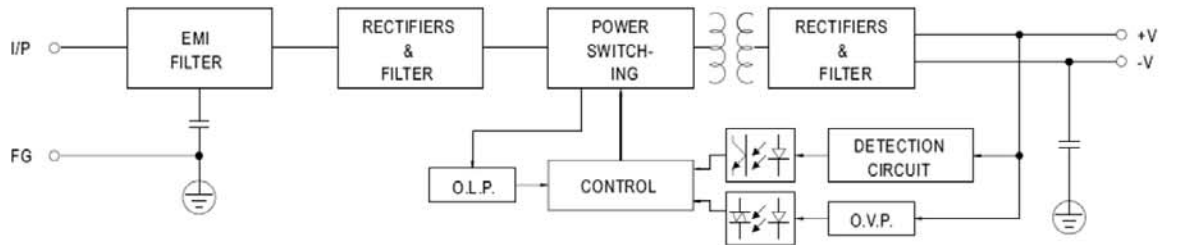
MODEL		3H-301XX05	3H-301XX12	3H-301XX15	3H-301XX24	3H-301XX48	
OUTPUT	DC VOLTAGE	5V	12V	15V	24V	48V	
	RATED CURRENT	6A	2.5A	2A	1.25A	0.625A	
	CURRENT RANGE	0~6A	0~2.5A	0~2A	0~1.25A	0~0.625A	
	RATED POWER	30W	30W	30W	30W	30W	
	RIPPLE & NOISE <small>Note.2</small>	50mVp-p	120mVp-p	150mVp-p	200mVp-p	240mVp-p	
	VOLTAGE ADJ. RANGE	4.75V~5.5V	10.8V~13.2V	13.5V~16.5V	21.6V~26.4V	43.2V~52.8V	
	VOLTAGE TOLERANCE <small>Note.3</small>	$\pm 2\%$	$\pm 1\%$	$\pm 1\%$	$\pm 1\%$	$\pm 1\%$	
	LINE REGULATION	$\pm 1\%$	$\pm 0.5\%$	$\pm 0.5\%$	$\pm 0.5\%$	$\pm 0.5\%$	
	LOAD REGULATION	$\pm 2\%$	$\pm 0.5\%$	$\pm 0.5\%$	$\pm 0.5\%$	$\pm 0.5\%$	
	SETUP TIME	1000ms/230VAC ; 2000ms/115VAC at full load					
RISE TIME	50ms at full load						
HOLD UP TIME	50ms/230VAC ; 10ms/115VAC at full load						
Green mode function	Power consumption at no load< 0.5W at 230VAC input						
INPUT	VOLTAGE RANGE	85 ~ 264VAC ; 120 ~ 370VDC					
	FREQUENCY RANGE	47~63Hz					
	EFFICIENCY	78%	82%	83%	84%	85%	
	AC CURRENT	0.7A/115VAC ; 0.4A/230VAC					
	INRUSH CURRENT	COLD START 30A/115VAC ; 60A/230VAC					
	LEAKAGE CURRENT	<3.5mA /240VAC					
PROTECTION	OVER LOAD	110~160% rated output power Protection type: Hiccup mode,recovers automatically after fault condition is removed					
	OVER VOLTAGE	7.0V MAX.	16.8V MAX.	21V MAX.	33.6V MAX.	67.2V MAX.	
		Protection type: Shut down and latch off , recover after re-start up.					
ENVIRONMENT	WORKING TEMP	-10 ~ +60°C (Refer to output load derating curve)					
	WORKING HUMIDITY	20% ~90% RH non-condensing					
	STORAGE TEMP,HUMIDITY	-20 ~ +85°C ; 10% ~95% RH					
	TEMP. COEFFICIENT	$\pm 0.03\% / ^\circ\text{C}$ (0 ~ 50°C)					
	VIBRATION	10~500Hz,2G 10min./1cycle,period for 60min. Each along X,Y,Z axes					
SAFETY & EMC	SAFETY STANDARDS	Meet UL1012,UL60950-1 ,TUV EN60950-1					
	WITHSTAND VOLTAGE	I/P-O/P:3KVAC I/P-FG:1.5KVAC O/P-FG:0.5KVAC					
	ISOLATION RESISTANCE	I/P-O/P,I/P-FG,O/P-FG:100M Ohms/500VDC					
	EMI CONDUCTION&RADIATION	Meet EN55022(CISPR22)Class B					
	HARMONIC CURRENT	Meet EN61000-3-2,-3					
	EMS IMMUNITY	Meet EN61000-4-2,3,4,5,6,8,11 ; ENV50204,EN55024,light industry level,criteria A					
OTHERS	MTBF	300K hrs min. MIL-HDBK-217F(25°C)					
	DIMENSION	99*97*36mm(L*W*H)					
	PACKING	TBD					
NOTE	<p>1.All parameters NOT specially mentioned are measured at 230VAC input, rated load and 25°C of ambient temperature.</p> <p>2.RIPPLE & NOISE are measured at 20MHZ of bandwidth by using a 12"twisted pair-wire terminated with a 0.1uf & 47uf parallel capacitor.</p> <p>3.Tolerance:includes set up tolerance,line regulation and load regulation.</p> <p>4.The power supply is considered a component which will be installed into a final equipment. The final equipment must be re-confirmed that it still meets EMC directives.</p>						



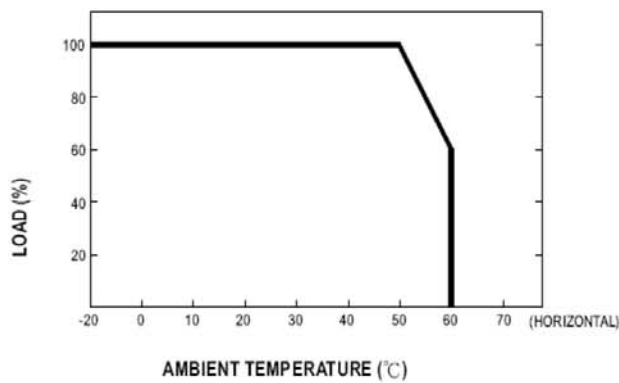
Terminal Pin. No Assignment

Pin No.	Assignment	Pin No.	Assignment
1	AC/L	4	DC OUTPUT -V
2	AC/N	5	DC OUTPUT +V
3	FG \perp		

■ Block Diagram



■ Derating Curve



■ Output Derating VS Input Voltage

