



60W Single Output Switching Power Supply

60W SERIES

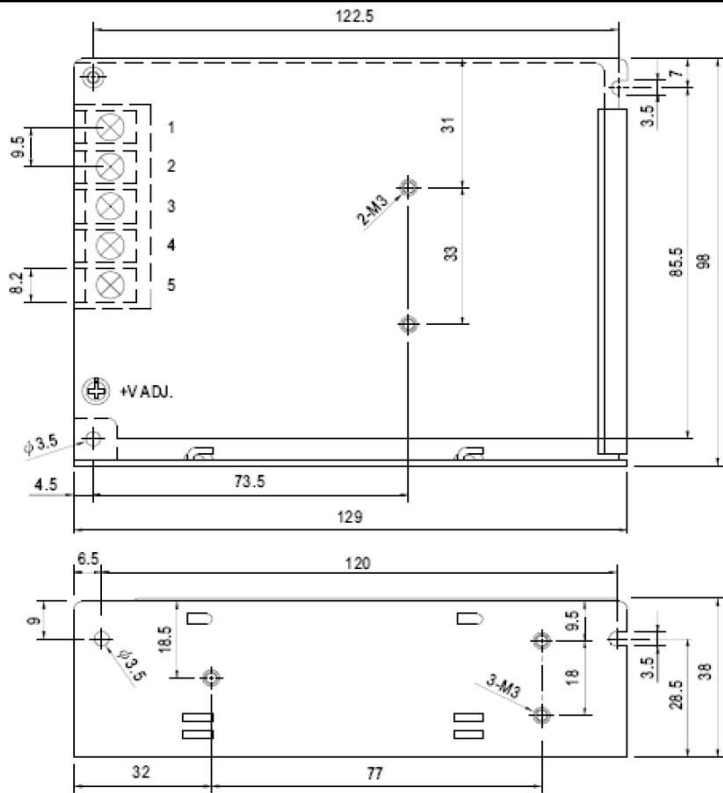
Features:

- * Universal AC input /Full range
- * Green mode design,no load<0.5W
- * High efficiency and high reliability
- * Built in EMI filter.low ripple noise
- * Protections: Short circuit / Overload / Over voltage
- * Output voltage $\pm 10\%$ adjustment
- * Cooling by free air convection
- * 100% full load burn-in test
- * 2 years warranty
- * Meet UL,CB,CE



SPECIFICATION

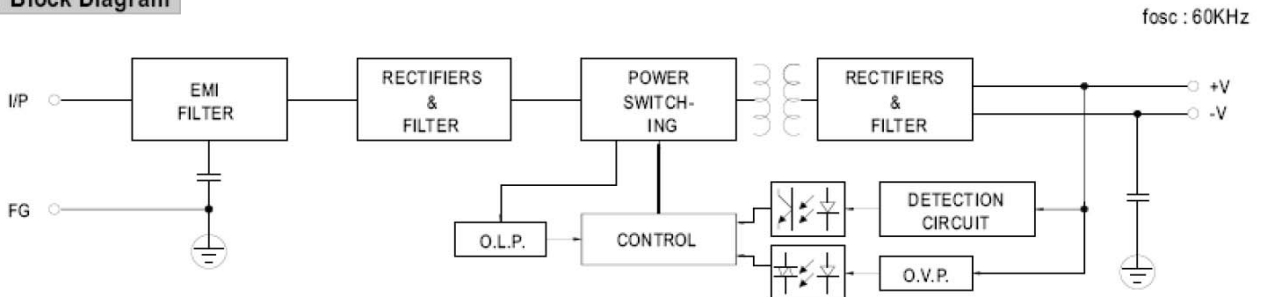
MODEL		3H-601XX05	3H-601XX12	3H-601XX15	3H-601XX24	3H-601XX48
OUTPUT	DC VOLTAGE	5V	12V	15V	24V	48V
	RATED CURRENT	10A	5A	4A	2.5A	1.25A
	CURRENT RANGE	0~10A	0~5A	0~4A	0~2.5A	0~1.25A
	RATED POWER	50W	60W	60W	60W	60W
	RIPPLE & NOISE <small>Note.2</small>	100mVp-p	120mVp-p	150mVp-p	150mVp-p	200mVp-p
	VOLTAGE ADJ. RANGE	4.75V~5.5V	10.8V~13.2V	13.5V~16.5V	21.6V~26.4V	43.2V~52.8V
	VOLTAGE TOLERANCE <small>Note.3</small>	$\pm 2\%$	$\pm 1\%$	$\pm 1\%$	$\pm 1\%$	$\pm 1\%$
	LINE REGULATION	$\pm 1\%$	$\pm 0.5\%$	$\pm 0.5\%$	$\pm 0.5\%$	$\pm 0.5\%$
	LOAD REGULATION	$\pm 2\%$	$\pm 0.5\%$	$\pm 0.5\%$	$\pm 0.5\%$	$\pm 0.5\%$
	SETUP TIME	1000ms/230VAC ; 2000ms/115VAC at full load				
RISE TIME	50ms at full load					
HOLD UP TIME	50ms/230VAC ; 10ms/115VAC at full load					
Green mode function	Power consumption at no load< 0.5W at 230VAC input					
INPUT	VOLTAGE RANGE	85 ~ 264VAC ; 120 ~ 370VDC				
	FREQUENCY RANGE	47~63Hz				
	EFFICIENCY	79%	84%	85%	86%	87%
	AC CURRENT	1.1A/115VAC ; 0.65A/230VAC				
	INRUSH CURRENT	COLD START 30A/115VAC ; 60A/230VAC				
	LEAKAGE CURRENT	<3.5mA /240VAC				
PROTECTION	OVER LOAD	110~160% rated output power Protection type: Hiccup mode,recovers automatically after fault condition is removed				
	OVER VOLTAGE	7.0V MAX.	16.8V MAX.	21V MAX.	33.6V MAX.	67.2V MAX.
ENVIRONMENT	WORKING TEMP	-10 ~ +60°C (Refer to output load derating curve)				
	WORKING HUMIDITY	20% ~90% RH non-condensing				
	STORAGE TEMP ,HUMIDITY	-20 ~ +85°C ; 10% ~95% RH				
	TEMP. COEFFICIENT	$\pm 0.03\%$ / °C (0 ~ 50°C)				
	VIBRATION	10~500Hz,2G 10min./1cycle,period for 60min. Each along X,Y,Z axes				
SAFETY & EMC	SAFETY STANDARDS	Meet UL1012,UL60950-1 ,TUV EN60950-1				
	WITHSTAND VOLTAGE	I/P-O/P:3KVAC I/P-FG:1.5KVAC O/P-FG:0.5KVAC				
	ISOLATION RESISTANCE	I/P-O/P,I/P-FG,O/P-FG:100M Ohms/500VDC				
	EMI CONDUCTION&RADIATION	Meet EN55022(CISPR22)Class B				
	HARMONIC CURRENT	Meet EN61000-3-2,-3				
	EMS IMMUNITY	Meet EN61000-4-2,3,4,5,6,8,11 ; ENV50204,EN55024,light industry level,criteria A				
OTHERS	MTBF	300K hrs min. MIL-HDBK-217F(25°C)				
	DIMENSION	129*98*38mm(L*W*H)				
	PACKING	TBD				
NOTE	<p>1.All parameters NOT specially mentioned are measured at 230VAC input,rated load and 25°C of ambient temperature.</p> <p>2.RIPPLE & NOISE are measured at 20MHZ of bandwidth by using a 12"twisted pair-wire terminated with a 0.1uf & 47uf parallel capacitor.</p> <p>3.Tolerance:includes set up tolerance,line regulation and load regulation.</p> <p>4.The power supply is considered a component which will be installed into a final equipment. The final equipment must be re-confirmed that it still meets EMC directives.</p>					



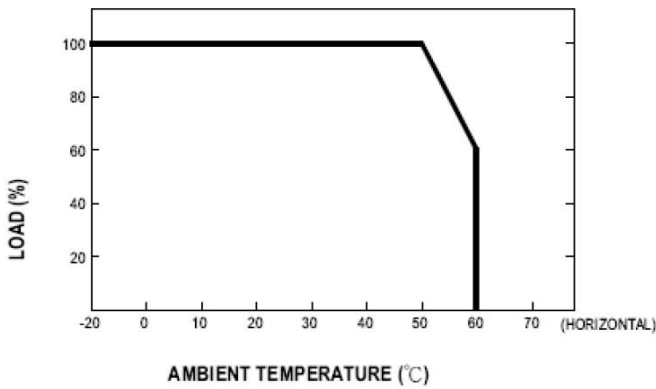
Terminal Pin. No Assignment

Pin No.	Assignment	Pin No.	Assignment
1	AC/L	4	DC OUTPUT -V
2	AC/N	5	DC OUTPUT +V
3	FG		

■ Block Diagram



■ Derating Curve



■ Output Derating VS Input Voltage

