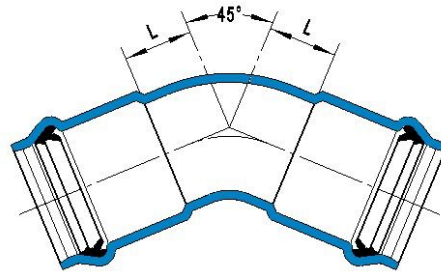
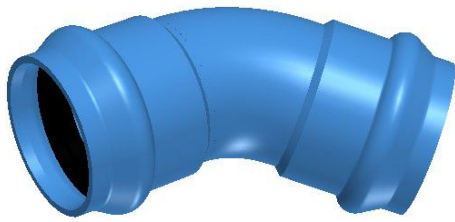


Double Sockets 45° Bend



BODY: Ductile iron grade 500-7/ 450-12 in accordance with ISO 1083.

GASKET: Rubber E.P.D.M. in accordance with EN 681.1

WORKING PRESSURE: 16 Bar or 250 PSI

FLUID TEMPERATURE: 0°C-50°C, excluding frost.

EXTERNAL COATINGS : zinc coating +bitumen painting/liquid epoxy painting/epoxy applied by FBE Or according to customers' requirements.

INTERNAL COATINGS : cement mortar lining/liquid epoxy painting/epoxy applied by FBE/according to customers' requirements.

REFERENCE RULES: Dimensions and testing in accordance with ISO 2531/EN 545.

USE:Used for jointing the PVC pipes, they can assembled by pushing the spigot through the gasket in the socket of the mating component.

OD	L	R	Mass (kg)	pattern
50	40	78	2.10	
63	40	78	2.79	y
75	40	78	3.55	y
90	50	102	4.95	y
110	60	126	6.78	y
125	65	138	8.29	y
140	65	138	9.90	y
160	70	150	12.54	y
180	70	150	14.82	
200	70	150	16.83	y
225	80	170	21.27	y
250	110	242	28.30	y
280	130	290	34.84	
315	135	302	43.27	y
355	170	386	60.45	
400	175	398	74.07	