

# 17" Video

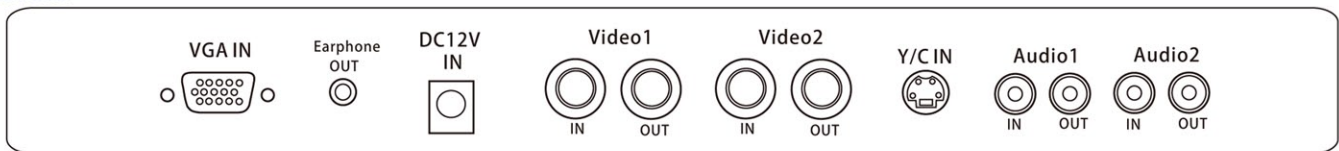
## Professional Video TFT LCD Monitor



### FEATURES

- Special Video Processor.
- NTSC/PAL Auto Switch.
- VESA Standard Bracket.
- Automatic Color Control and Color Killer.
- PIP Control Function (PC/Video).
- Screen protector(Anti-blur/ Image auto move).
- 3D De-interlace Technology.
- 3D Comb Filter Technology.
- Friendly OSD Menu.
- Sharpness Enhancement.
- Black Level Extension.
- With M-Star IC.
- Shortly Response Time Between Source Switching.
- Monitor Identification Setting Function.
- 3-D Video Noise Reduction.
- 10 Bit Display Color Processing.
- Aluminum Panel Frame ,Metal Case.
- Plastic Panel Frame ,Metal Case.(10.4" Option ONLY)

### CONNECTORS



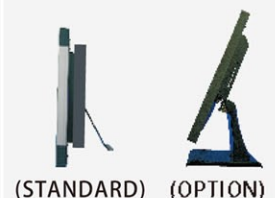
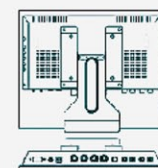
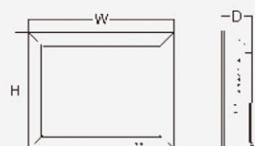
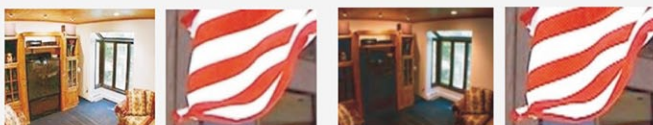
### SPECIFICATIONS

MODEL	CH-L171AV-1MDEL	CH-L171AV-1MDE
Operating System	NTSC-PAL Auto Switch	
LCD Panel	17" TFT	
Viewable Area (H/V-mm)	338 x 270	
Profile Ratio	4:3	
Max. Resolution (H/V)	1280 x 1024	
Display Colors	16.7M	
Brightness (nit)	250nit(LED B/L)	300nit
Contrast Ratio	1000:1	800:1
Response Time(Tr / Tf-ms)	3.5/1.5	1.2/3.8
View Angle (U/D/L/R)	75/85/85/85	80/80/80/80
Input Video Signal	1 x (Composite Video): 1.0-Vp-p, 75Ω, 1 x (S-Video): Y (1.0-Vp-p), C (0.286-Vp-p), 1 x (Analog RGB)	
Input Audio Signal	1 x RCA (L/R) 50-100-mVp-p, 1 x PC Audio IN (Phone Jack) (R/L)	
Input / Output Impedance	BNC(in)x1, BNC(out)x1, 4 P Min-Din x 1, D-Sub(in)x1	
Panel Frame	Aluminum	
Control	Source/Menu/Item/Adjust(UP/DOWN)/Power	
Remote Control	YES	
Video Connector	BNC(In)x2, 4P Mini-Din (In)x1, 15 Pin D-sub x1	
Audio Connector	RCA(In)x2, Ear Phone Out x1: Audio Speaker x2 (2W+2W)	
Environment	Operating : 0°C ~ 50°C / Humidity: 10% ~ 85%, Storage: -10°C ~ 60°C / Humidity: 10% ~ 85%	
Power Consumption	30W	
Power Supply	AC 90~260V, Global Switching Power Supply(12V 5A)	
Net Dimension (W x H x D)	420 (W) x 355(H) x 80(D)mm	
Net Weight	5kgs(11.0lbs)	
3D De-interlace Function	YES	
3D Comb Filter Function	YES	
PIP/POP Function	PC/Video	
Screen Protector	YES	

### INTERFACE

3D De-interlace Technology.

Non 3D De-interlace Technology.



(STANDARD) (OPTION)