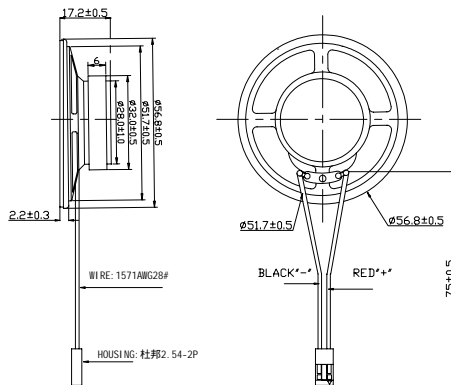


# XIAMEN HONCH INDUSTRIAL SUPPLIERS CO LTD

Tel : +86-592-5020537 Fax: +86-592-5020137 <http://www.honch-ind.com> rogeryu@honch-ind.com

1	Model	5717LP08+cable
2	Dimension	Outline Dimension Shall Be As Shown In Fig(1).
3	Weight	Approx 48 Grams.
4	Magnet	Materials Ferri te Size: 32*18*6
5	Impedance	8± 15% ohm At 1000Hz/1v.
6	Power Rating	Normal 0.5W. Maximum 1.0 W.
7	Lower Resonant Frequency	530Hz ± 20%
8	Output Sound Pressure Level (S.P.L)	97±3db/0.001Watt 0.01Meter. Average At1000, Hz. Measurement Method Shown In Fig(2).
9	Frequency Range	F0-6KHz. Average SPL-20db. Shown In Fig(3).
10	Distortion	5% Maximum At 1000Hz. 0.5W.
11	Abnormal Sound Test	Must Be Normal By 2.0 Volts. Sine Wave.
12	Polari ty	Diaphragm Shall More Forward When Apply a Posi tive DC Current To The “+” or “marked” Terminal .
13	Operating Temperature	-20°C to +50°C
14	Storage Temperature	-25°C to +55°C
15	Reli able Test	
15-1	Load Test	Must be normal after load test:white noise 0.5 W 24 hours.
15-2	Heat Test	Must be normal after 55±2 °C and relative humidity 20-25% 16hours And then room temperature 1 hours.
15-3	Cold Test	Must be normal after -25±2 °C 16hours and then room temperature 1 hours.
15-4	Humi di ty Test	Must be normal after 40±2 °C and relative humidity 90-95% 16hours And then room temperature 1 hours.

Fig. 1

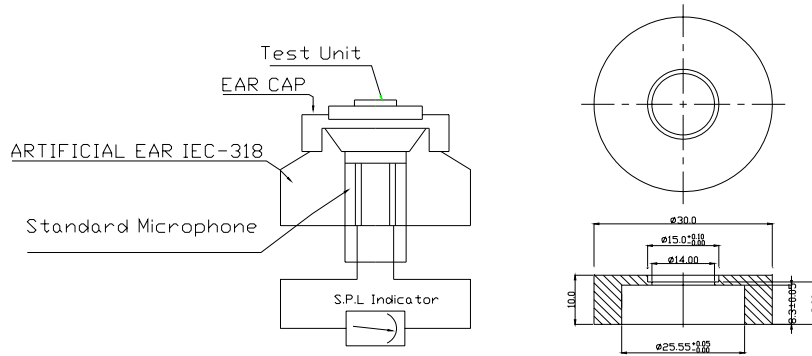


Unit:mm Tolerance: ±0.3

# XIAMEN HONCH INDUSTRIAL SUPPLIERS CO LTD

Tel: +86-592-5020537 Fax: +86-592-5020137 <http://www.honch-ind.com> rogeryu@honch-ind.com

Measurement Method Fig(2).



Frequency Response Fig(3).

05/15/2008 10:56
CRY6125Y 扬声器测试仪 V86
无框 滤波器1次

DCR= \_\_\_\_\_  $\Omega$       1KHz灵敏度 : 090.70 dB      ACZ: \_\_\_\_\_  $\Omega$       Qm: \_\_\_\_\_  
 Ueq= \_\_\_\_\_ dm<sup>3</sup> → 平均灵敏度 : 097.83 dB      Zm: \_\_\_\_\_  $\Omega$       Qe: \_\_\_\_\_  
 Dist.=010 cm      F0: \_\_\_\_\_ Hz      Qt: \_\_\_\_\_  
 型号:57170801  
 0 dB 参考值为 : 20.0  $\mu$ Pa      扫频速度 : 005 ms 中速      扫频模式 : 1/12 Oct

