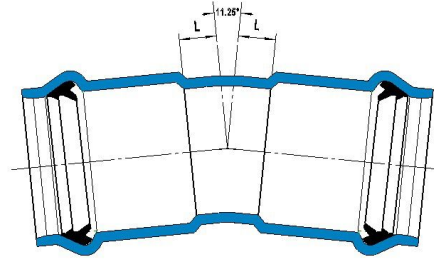
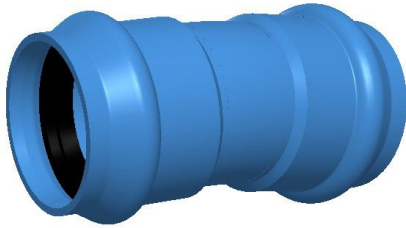


Double Sockets 11.25° Bend



BODY: Ductile iron grade 500-7/ 450-12 in accordance with ISO 1083.

GASKET: Rubber E.P.D.M. in accordance with EN 681.1

WORKING PRESSURE: 16 Bar or 250 PSI

FLUID TEMPERATURE: 0°C-50°C, excluding frost.

EXTERNAL COATINGS : zinc coating +bitumen painting/liquid epoxy painting/epoxy applied by FBE Or according to customers' requirements.

INTERNAL COATINGS : cement mortar lining/liquid epoxy painting/epoxy applied by FBE/according to customers' requirements.

REFERENCE RULES: Dimensions and testing in accordance with ISO 2531/EN 545.

USE: Used for jointing the PVC pipes, they can assembled by pushing the spigot through the gasket in the socket of the mating component.

OD	L	R	Mass (kg)	pattern
50	20	122	1.82	
63	20	122	2.43	y
75	25	172	3.23	y
90	25	172	4.26	y
110	30	224	5.73	y
125	30	224	6.87	
140	30	224	8.28	
160	30	224	10.27	y
180	30	224	12.21	
200	30	224	13.94	y
225	40	305	17.97	y
250	40	305	21.56	y
280	50	406	26.22	
315	55	457	33.77	y
355	60	508	43.45	
400	65	560	54.10	