

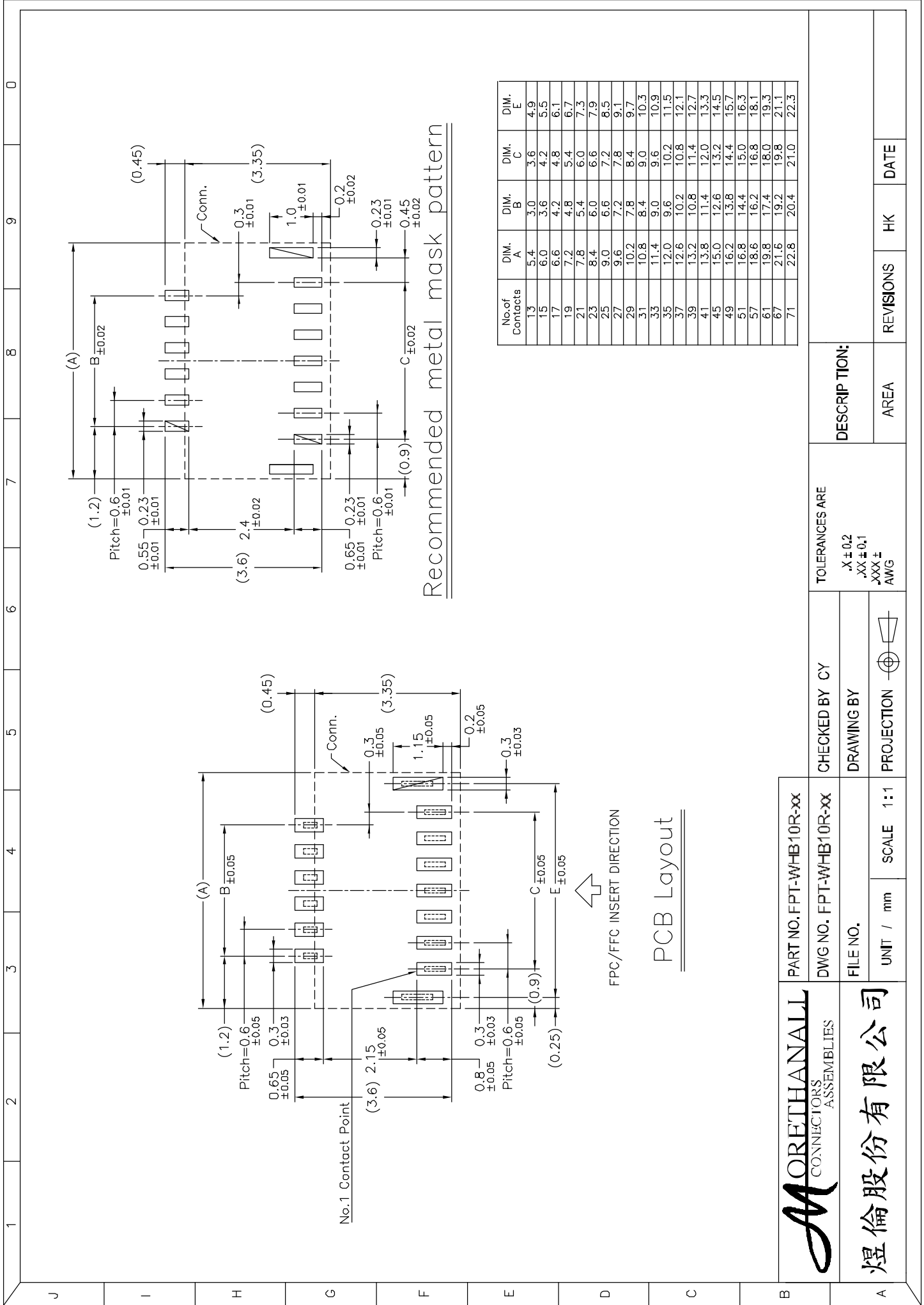
No. of Contacts	DIM. A	DIM. B	DIM. C	DIM. D	DIM. E
13	5.4	3.0	3.6	4.23	4.9
15	6.0	3.6	4.2	4.83	5.5
17	6.6	4.2	4.8	5.43	6.1
19	7.2	4.8	5.4	6.03	6.7
21	7.8	5.4	6.0	6.63	7.3
23	8.4	6.0	6.6	7.23	7.9
25	9.0	6.6	7.2	7.83	8.5
27	9.6	7.2	7.8	8.43	9.1
29	10.2	7.8	8.4	9.03	9.7
31	10.8	8.4	9.0	9.63	10.3
33	11.4	9.0	9.6	10.23	10.9
35	12.0	9.6	10.2	10.83	11.5
37	12.6	10.2	10.8	11.43	12.1
39	13.2	10.8	11.4	12.03	12.7
41	13.8	11.4	12.0	12.63	13.3
45	15.0	12.6	13.2	13.83	14.5
49	16.2	13.8	14.4	15.03	15.7
51	16.8	14.4	15.0	15.63	16.3
57	18.6	16.2	16.8	17.43	18.1
61	19.8	17.4	18.0	18.63	19.3
67	21.6	19.2	19.8	20.43	21.1
71	22.8	20.4	21.0	21.63	22.3

FPT-WHB10R-xx-LF  
LEADFREE  
RoHS Compliant

NOTE:  
1. MATERIAL:  
HOUSING: LCP (UL 94V-0)  
ACTUATOR: LCP (UL 94V-0)  
TERMINAL: PHOSPHOR BRONZE  
STOPPER: PHOSPHOR BRONZE  
2. PLATING:  
TERMINAL: SEE ORDERING INFORMATION  
STOPPER: TIN OVER NICKEL (LEAD FREE)

PART NO. FPT-WHB10R-xx		TOLERANCES ARE	
DWG NO. FPT-WHB10R-xx		.X ± 0.2 .XX ± 0.1 .XXX ± AWG	
FILE NO.		CHECKED BY CY	DRAWING BY
UNIT / mm	SCALE 1:1	PROJECTION	
PART NO. FPT-WHB10R-xx		DESCRIPTION: 0.3mm Pitch FPC Conn. E/O (H=1.0)	DATE
DWG NO. FPT-WHB10R-xx		AREA	REVISIONS
FILE NO.		HK	DATE
UNIT / mm		SCALE 1:1	
PROJECTION			
DRAWING BY			
CHECKED BY CY			
TOLERANCES ARE			
.X ± 0.2			
.XX ± 0.1			
.XXX ±			
AWG			

**MOORETHANALL**  
CONNECTORS  
ASSEMBLIES  
煜倫股份有限公司

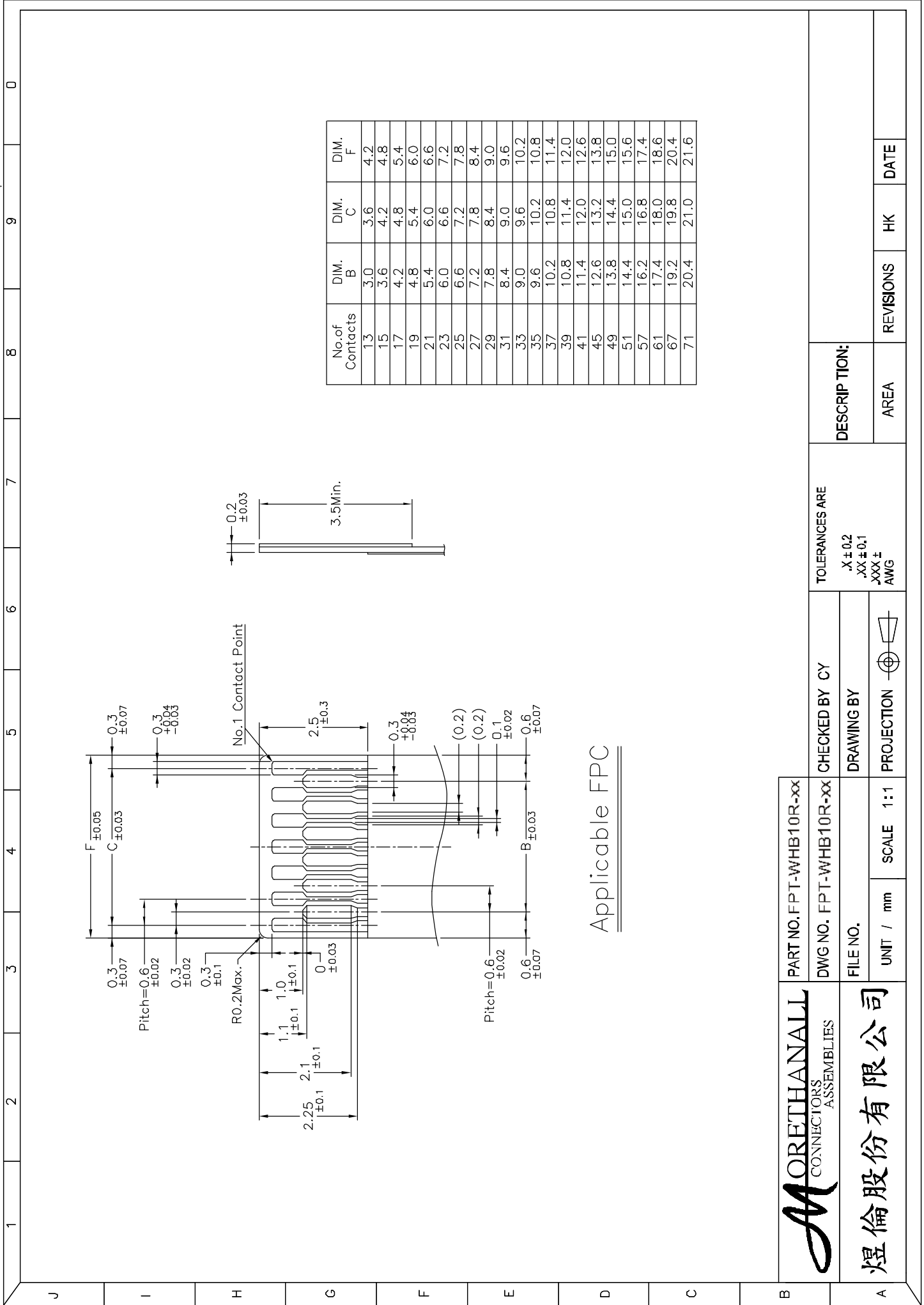


Recommended metal mask pattern

No. of Contacts	DIM. A	DIM. B	DIM. C	DIM. E
13	5.4	3.0	3.6	4.9
15	6.0	3.6	4.2	5.5
17	6.6	4.2	4.8	6.1
19	7.2	4.8	5.4	6.7
21	7.8	5.4	6.0	7.3
23	8.4	6.0	6.6	7.9
25	9.0	6.6	7.2	8.5
27	9.6	7.2	7.8	9.1
29	10.2	7.8	8.4	9.7
31	10.8	8.4	9.0	10.3
33	11.4	9.0	9.6	10.9
35	12.0	9.6	10.2	11.5
37	12.6	10.2	10.8	12.1
39	13.2	10.8	11.4	12.7
41	13.8	11.4	12.0	13.3
45	15.0	12.6	13.2	14.5
49	16.2	13.8	14.4	15.7
51	16.8	14.4	15.0	16.3
57	18.6	16.2	16.8	18.1
61	19.8	17.4	18.0	19.3
67	21.6	19.2	19.8	21.1
71	22.8	20.4	21.0	22.3

FPC/FFC INSERT DIRECTION  
  
PCB Layout

	PART NO. FPT-WHB10R-xx		CHECKED BY CY		TOLERANCES ARE .X ± 0.2 .XX ± 0.1 .XXX ± AWG		DESCRIPTION:		
	DWG NO. FPT-WHB10R-xx		DRAWING BY		AREA		REVISIONS		
FILE NO.		SCALE 1:1		PROJECTION		HK		DATE	
UNIT / mm									



No. of Contacts	DIM. B	DIM. C	DIM. F
13	3.0	3.6	4.2
15	3.6	4.2	4.8
17	4.2	4.8	5.4
19	4.8	5.4	6.0
21	5.4	6.0	6.6
23	6.0	6.6	7.2
25	6.6	7.2	7.8
27	7.2	7.8	8.4
29	7.8	8.4	9.0
31	8.4	9.0	9.6
33	9.0	9.6	10.2
35	9.6	10.2	10.8
37	10.2	10.8	11.4
39	10.8	11.4	12.0
41	11.4	12.0	12.6
45	12.6	13.2	13.8
49	13.8	14.4	15.0
51	14.4	15.0	15.6
57	16.2	16.8	17.4
61	17.4	18.0	18.6
67	19.2	19.8	20.4
71	20.4	21.0	21.6

Applicable FPC

**MORETHANALL**  
CONNECTORS  
ASSEMBLIES

煜倫股份有限公司

PART NO. FPT-WHB10R-xx

CHECKED BY CY

DRAWING BY



TOLERANCES ARE

- .X ± 0.2
- .XX ± 0.1
- .XXX ±
- AWG

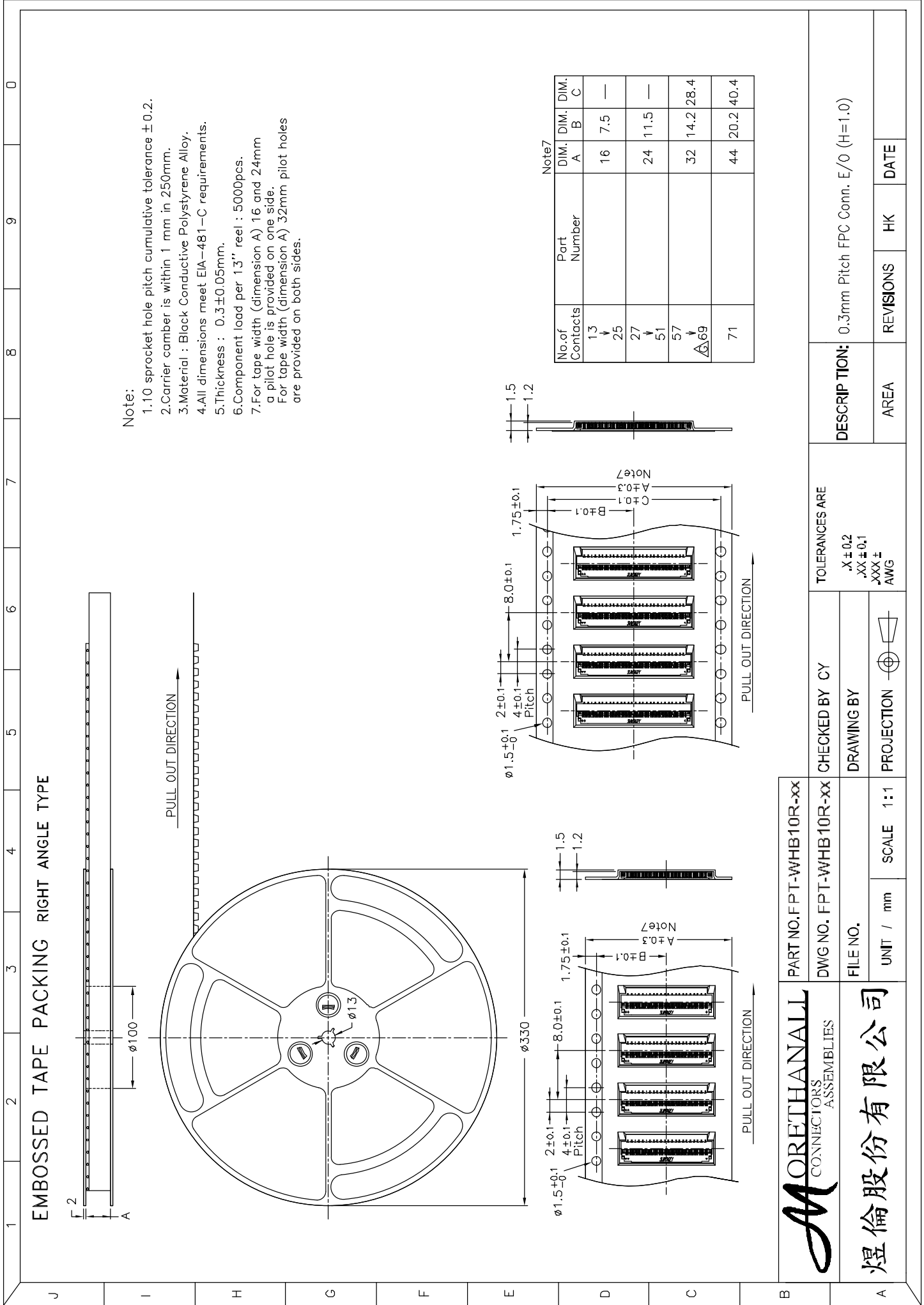
DESCRIPTION:

AREA

REVISIONS

HK

DATE



- Note:
- 1.10 sprocket hole pitch cumulative tolerance  $\pm 0.2$ .
  - 2.Carrier camber is within 1 mm in 250mm.
  - 3.Material : Black Conductive Polystyrene Alloy.
  - 4.All dimensions meet EIA-481-C requirements.
  - 5.Thickness :  $0.3 \pm 0.05$ mm.
  - 6.Component load per 13" reel : 5000pcs.
  - 7.For tape width (dimension A) 16 and 24mm a pilot hole is provided on one side.  
For tape width (dimension A) 32mm pilot holes are provided on both sides.

No. of Contacts	Part Number	DIM. A	DIM. B	DIM. C
13		16	7.5	—
25				
27		24	11.5	—
51				
57		32	14.2	28.4
69				
71		44	20.2	40.4

**EMBOSSD TAPE PACKING RIGHT ANGLE TYPE**

**MOORETHANALL**  
CONNECTORS ASSEMBLIES

煜倫股份有限公司

PART NO. FPT-WHB10R-XX  
DWG NO. FPT-WHB10R-XX  
FILE NO.

CHECKED BY CY  
DRAWING BY  
PROJECTION

SCALE 1:1  
UNIT / mm

TOLERANCES ARE  
X  $\pm 0.2$   
XX  $\pm 0.1$   
XXX  $\pm$   
AWG

DESCRIP TION: 0.3mm Pitch FPC Conn. E/O (H=1.0)

AREA REVISIONS HK DATE