

Primacy

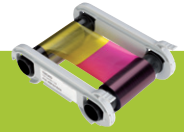
USER-FRIENDLY

- Easy access to all features
- 100-card feeder and hopper conveniently available at the front
- Monitoring of remaining cards at a glance
- Reject tray located at the back (30 cards)
- Supplied with Evolis Premium Suite®, for automated configuration
- A lightweight printer: only 4 kg (less than 9 lbs)



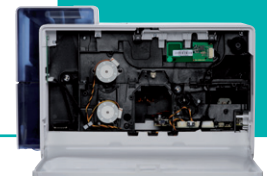
FIRST-CLASS PERFORMANCES

- Increased efficiency with an autonomy of 100 cards
- Color ribbon capacity (YMCKO): 250 cards
- Full flexibility: single/dual-sided, and encoding options
- Fast: 850 cards per hour in monochrome



HIGHLY MODULAR

- Configuration as per your requirements : single or dual-sided
- Encoders can be combined for advanced personalization



GENERAL FEATURES

- Single-sided or dual-sided printing module, edge to edge printing
- Color dye sublimation, monochrome thermal transfer
- 300 dpi print head (11.8 dots/mm)
- 16MB Memory (RAM)

PRINTING PERFORMANCES

- Single side:
 - Color (YMCKO): 190 - 210 cards /hour
 - Monochrome: 600 - 850 cards /hour
- Dual side (YMCKO-K): 140 cards /hour

CARD MANAGEMENT AND SPECIFICATIONS

- Input hopper capacity: 100 cards (0.76 mm - 30 mil)
- Output hopper capacity: 100 cards (0.76 mm - 30 mil)
- Reject tray: 30 cards (0.76 mm - 30 mil)
- Card thickness: 0.25 to 1.25 mm (10 to 50 mil), gauge adjustment
- Types of cards: All PVC, Composite PVC cards, PET, ABS¹⁾ and special varnished¹⁾ cards
- Card format ISO CR80 - ISO 7810 (53.98mm x 85.60 mm)

EVOLIS HIGH TRUST® RIBBONS - Need to buy additionally

To maximize the quality and durability of printed cards, the lifespan of the print head and the overall printer reliability, use Evolis High Trust® ribbons.

- Automatic identification and setting
- Delivered in a drop-in cassette for easy handling
- Ribbon saver for monochrome printing
- Ribbon capacity:
 - YMCKO: 250 prints / roll
 - YMCKO-K: 200 prints / roll
 - ½ YMCKO: 400 prints / roll
 - KO: 600 prints / roll
 - Monochrome ribbon: 1000 prints / roll²⁾
 - Hologram varnish: 400 prints / roll

INTERFACES

- USB 1.1 (compatible 2.0)
- Ethernet TCP-IP 10BaseT, 100BaseT (Traffic Led)

DISPLAY

- Printer LEDs
- Graphical notifications³⁾ from the printer: Empty input hopper alert, cleaning alerts, empty/low level ribbon alert

SOFTWARE - Need to buy additionally

- Delivered with Evolis Premium Suite® for Windows:
 - Printer driver
 - Evolis Print Center for printer administration and settings
 - Printer Manager for bi-directional graphical notification⁴⁾
 - Compatible with Windows: XP SP3; Vista 32/64, W7 32/64⁴⁾
- Delivered with eMedia CS Card Designer, Standard Edition, unlimited version (compatible with Windows™ 7 and Vista)
- Delivered with a driver for Mac OS X (from 10.5 onwards)
- Other OS: Linux upon request

WARRANTY

- 3-year warranty (printer and printhead)⁵⁾

SIZE AND WEIGHT

- Size: Height 247mm (9.72") x length 205mm (8.07") x width 381 mm (14.99")
- With reject tray: Height 247mm (9.72") x length 205mm (8.07") x width 481 mm (18.93")
- Weight: 4.02 kg (8.86 lbs)

SOUND (EVALUATED ACCORDING TO THE ISO 7779 STANDARD)

- Sound pressure in assistant positions LpAm (colour mode YMCKO)
- When operating: 48dB (A)
- In sleep mode: background noise level

SAFETY

- Support for Kensington® security lock
- Data encryption for magnetic encoding

PACKAGING CONTENT

- Printer
- CD-ROM with printer drivers, user manuals, and eMedia CS
- USB cable
- Reject tray
- Power supply and cord

OPTIONS & ACCESSORIES

- Colors available : Fire Red & Brilliant Blue
- Upgrade kit for dual-sided printing
- **Some modules need to be purchased separately.** Upgrade can be carried out on-site, by adding new modules:
 - Magnetic stripe encoder, smart contact station, smart encoding unit, contactless encoding unit

ENVIRONMENTAL FEATURES, CERTIFICATIONS AND STATEMENT OF COMPLIANCE

- Standby modes & reduced energy consumption
- CE, FCC, IEC, VCCI, CCC⁶⁾, KCO⁶⁾
- ErP 2009/125/CE, ENERGY STAR, ROHS

POWER

- Power supply: 100-240 Volts AC, 50-60 Hz, 1,8A
- Printer: 24 Volts DC, 3 A

ENVIRONMENT

- Min/max operating temperature: 15° / 30 °C (59° / 86 °F)
- Humidity: 20% to 65% non-condensing
- Min/max storage temperature: -5° / +70 °C (23° / 158 °F)
- Storage humidity: 20% to 70% non-condensing
- Operating ventilation: open air

RESIDENT FONTS

- Arial 100, Arial bold 100
- Barcode: Code 39, Code 128, EAN 13, 2/5 interleaved

¹ Under specific conditions / ² Depends on the Windows™ version / ³ Requires the .net 4.0 client profile version / ⁴ For older Windows versions, you can use the printer through the driver only (no Print Center, no Printer Manager) / ⁵ Warranty subject to observance of specific conditions and use of Evolis High Trust® ribbons / ⁶ Expected in December 2012