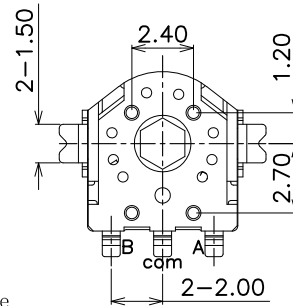
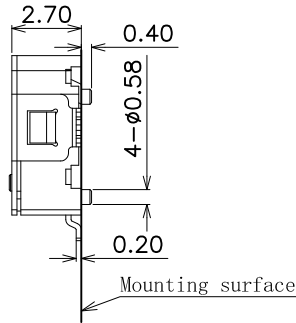
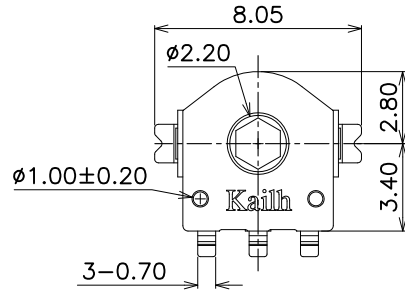
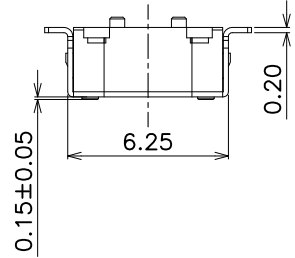
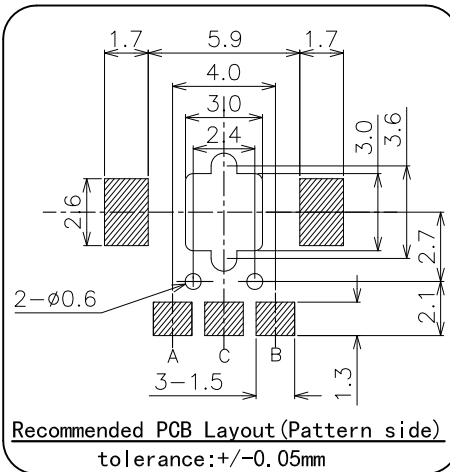
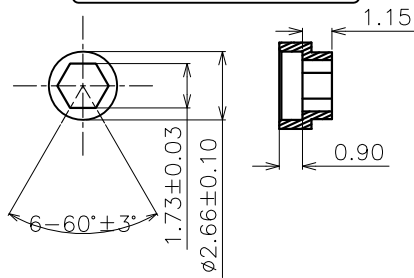


ABIDE BY ROHS

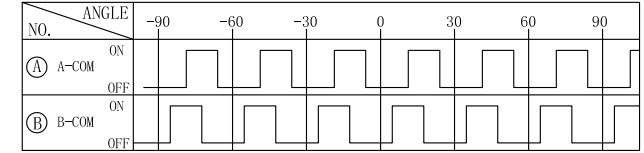
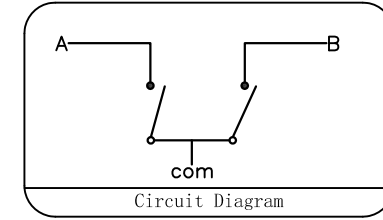
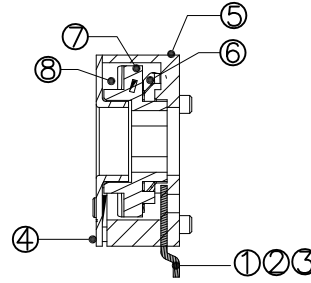


Shaft hole shape and dimension

Shaft hole position will be at random



Recommended PCB Layout (Pattern side)
tolerance: +/-0.05mm



Numbers of detent: 12
Pulse/Rotation: 12 Pulse/360° (reverse)

Specification :

- 1. Rated voltage: D. C. 5V
- 2. Maximum operating current (resistive load)
Each load :1mA
- 3. Resolution: 12 pulses/360° for each phase
- 4. Contact Resistance: 5Ω (Max)
- 5. Insulation resistance: 50MΩ (Min) DC50V
- 6. Dielectric strength: AC50V (50-60Hz) for 1 minute
- 7. Detent torque: 10-25 gf.cm
- 8. Life Test :100,000 Cycles

ITEM	PART NAME	TER.NO.	QTY.	MATERIAL	FINISHING	REMARK
8	Fixed Plate	—	1	Stainless Steel	—	—
7	Revolving Wheel	—	1	Nylon	Gray	UL 94HB
6	Contact	—	1	Copper Alloy	—	—
5	Base	—	1	Nylon	Black	UL 94HB
4	Shell	—	1	SPCC	Plating Tin	—
3	Terminal	3	1	Copper Alloy	Plating Silver	—
2	Terminal	2	1	Copper Alloy	Plating Silver	—
1	Terminal	1	1	Copper Alloy	Plating Silver	—

APPROVALS		DATE		东莞市凯华电子有限公司	
DRAWN	WUYU	2020.11.25		DONGGUAN CITY KAIHUA ELECTRONICS CO.,LTD	
CHECKED				TITLE:	Encoder (H=3.50mm/SMT)
APPROVALS				PART NO.	CEN653512A01
TOLERANCES ARE		30<L	±0.30	ANGLE	UNIT: mm
		10<L	±0.20		SCALE: 1:1
		5<L	±0.15		PROJ:
		L≤5	±0.10		DRAWING NO.
					SHEET 1 OF 1

备注：底座背面的压针孔★是根据产品模具成型要求而定的，其规格的大小与数量的多少对产品结构、功能及使用无任何影响。

ECN NO.	REV.	DATE.	DESCRIPTION.	CHANGE.	CHECK.	APPRO.
	AO		NEW			