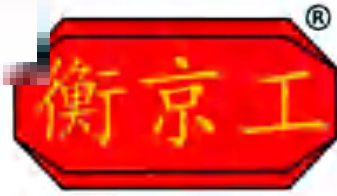


衡水京通工程橡胶有限公司

HENGSHUI JINGTONG RUBBER CO., LTD

【JINGTONG】



TECHNICAL DATA SHEET



– Elastomeric Expansion Joint Series



PHONE: +86-15731809416 TEL/FAX: +86-318-5227227

EMAIL: jingtong_nancy@jingtongchina.net

www.jingtongchina.net / www.jointwaterstop.com / <http://hsjtxj.en.alibaba.com>

ADD: NANWANGZHUANG VILLAGE, PENGDU TOWN, HENGSHUI CITY 053000, HEBEI PROVINCE, CHINA

【Bridge Elastomeric Expansion Joint】

▶ Description



Rubber expansion joints have a framework, bolted assembly segments, each 1m/1.83m/2m (other sizes can be made), and the junction with the deep mouth-groove. Rubber bridge expansion joints are mainly made of rubber, steel plate and angle iron. Steel plates are set in the rubber bridge expansion to strengthen the bearing capacity and they can slide freely along the angle iron to meet the expansion deformation of main grid. Internal stiffening plate to make such joint can withstand the load of various vehicles, with some vertical stiffness. Since rubber incompressibility, rubber plate specially shaped groove prevents telescopic joints swell up when

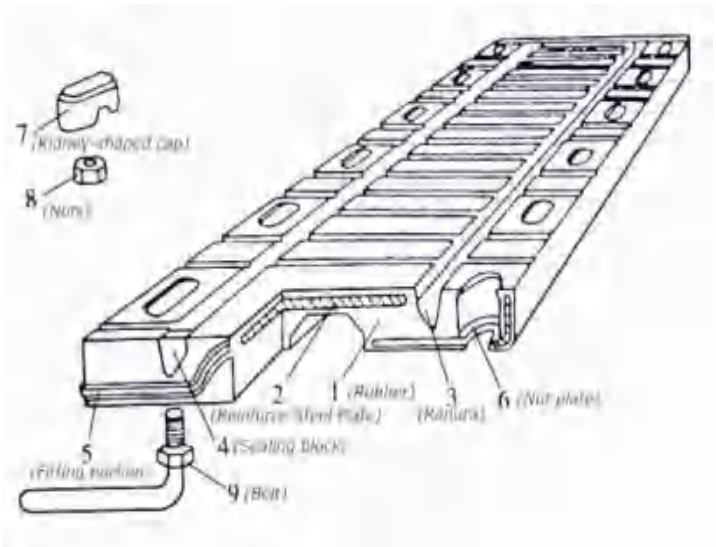
compressed. Because of the excellent seal ability and shock-absorbing effect of rubber, rubber bridge expansion joints do well in proofing water and reducing noise. The elasticity of rubber plates and its shear deformation in the telescopic channel helps the whole device to realize telescopic motion.

Normal Specifications:

30 Type 1000 × 230 × 35, 45 Type 1000 × 250 × 45, 50 Type 1000 × 270 × 42, 60 Type 1000 × 400 × 40 etc.

When this product is installed, the bottom surface of the bolt holes and joints per meter are filling adhesive coated, waterproof good.

This product is anti-aging, wear rubber processing, can withstand repeated loads of vehicles, long service life. Available for selection when they build the new bridge.



▶ Features

- Comfort

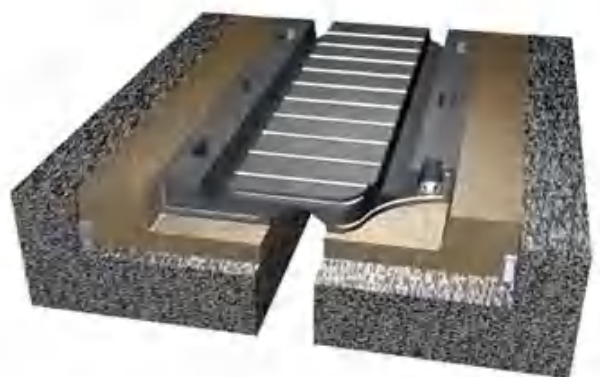
The user benefits in terms of comfort coming from the materials, designed specifically to soften the impact of vehicles wheels and flexibly absorb running surface irregularities.

- Safety

The upper face of the joint has non-skid grooves to offer users optimum safety.

- Flexibility

The Elastomeric joint is particularly capable of dealing with transversal and vertical movements as well as



rotations of the bearing structures. It could absorb all kinds of deformations and shaking. And its damping property is high and it's good for bridge shock absorption.

- Fast installation

The structure is simple, no need to have special stretch frame and anchoring steel bar. Construction is convenient and fast.

Elastomeric joints do not require space to be left in the structures and are fitted directly into the thickness of the revetment.

- Durability

Best sealing and waterproof property and anti-acid-base and corrosion.

All the metal parts are fully coated by an elastomer to guarantee outstanding resistance to corrosion.

It makes bridge smooth and seamless, and it's good for preserving, cleaning and moving snow.

- Economy

Low cost of construction, durable and remarkable economic benefit and social benefit.



 Property

Steel Clipped Washer

| No. | Item | Index |
|-----|---|--------------------|
| 1 | Hardness | 62±5 Shore A |
| 2 | Tensile Strength | 130Kg/cm2 min |
| 3 | Elongation at break | 400% min |
| 4 | Low temperature brittleness | -30℃ [Not brittle] |
| 5 | Ozone resistance (50pphm)20% Elongation 40℃×96h | No Cracks |
| 6 | Resistance to permanent set (70℃×24h) | 35% max |
| 7 | Oil Resistance | +18% |

Elastomeric Joint part property

| Item | | Neoprene Rubber (-25°C~ 60°C) | Natural Rubber (-35°C~ 60°C) | Neoprene Rubber (-40°C~ 60°C) |
|---|-------------------------|----------------------------------|---------------------------------|----------------------------------|
| Properties | | | | |
| Hardness (IRHD) | | 60±5 | 60±5 | 60±5 |
| Tensile Strength (Mpa) | | ≧ 15 | ≧ 16 | ≧ 14 |
| Elongation at break (%) | | ≧ 400 | ≧ 400 | ≧ 350 |
| Brittleness temperature (°C) | | ≧ -40 | ≧ -50 | ≧ -60 |
| Compression set constant (23±3°C ×24h) | | ≧ 20 | ≧ 20 | ≧ 20 |
| Resistant Ozone aging (25~ 50pphm) 20% Elongation 40°C ×96h | | No cracks | No cracks | No cracks |
| Hot air aging (Compared with previous unaged value occurred biggest change) | Test conditions (°C×h) | 70°C×96h | 70°C×96h | 70°C×96h |
| | Tensile Strength (%) | ± 15 | ± 15 | ± 10 |
| | Elongation at break (%) | ±25 | ±25 | ±20 |
| | Hardness change (IRHD) | 0~+10 | -5~+10 | 0~+10 |
| Salt water(23°C × 14d, %Concentration) | Volume Change (%) | ≧ +10 | ≧ +10 | ≧ +10 |
| | Hardness Change (IRHD) | ≧ +10 | ≧ +10 | ≧ +10 |
| Rubber and steel bonding peel strength(kN/m) | | >7 | >7 | >7 |
| oil resistance(No.1 Standard Oil, 23°C × 168h) | Volume Change (%) | -5~+10 | <+45 | <+45 |
| | Hardness Change (IRHD) | -10~+5 | <-25 | <-25 |
| Inside steel plate Yield Strength | | ≧235 | | |
| Inside steel plate Tensile Strength | | 360-510 | | |
| Inside steel plate Elongation at break | | ≧26 | | |



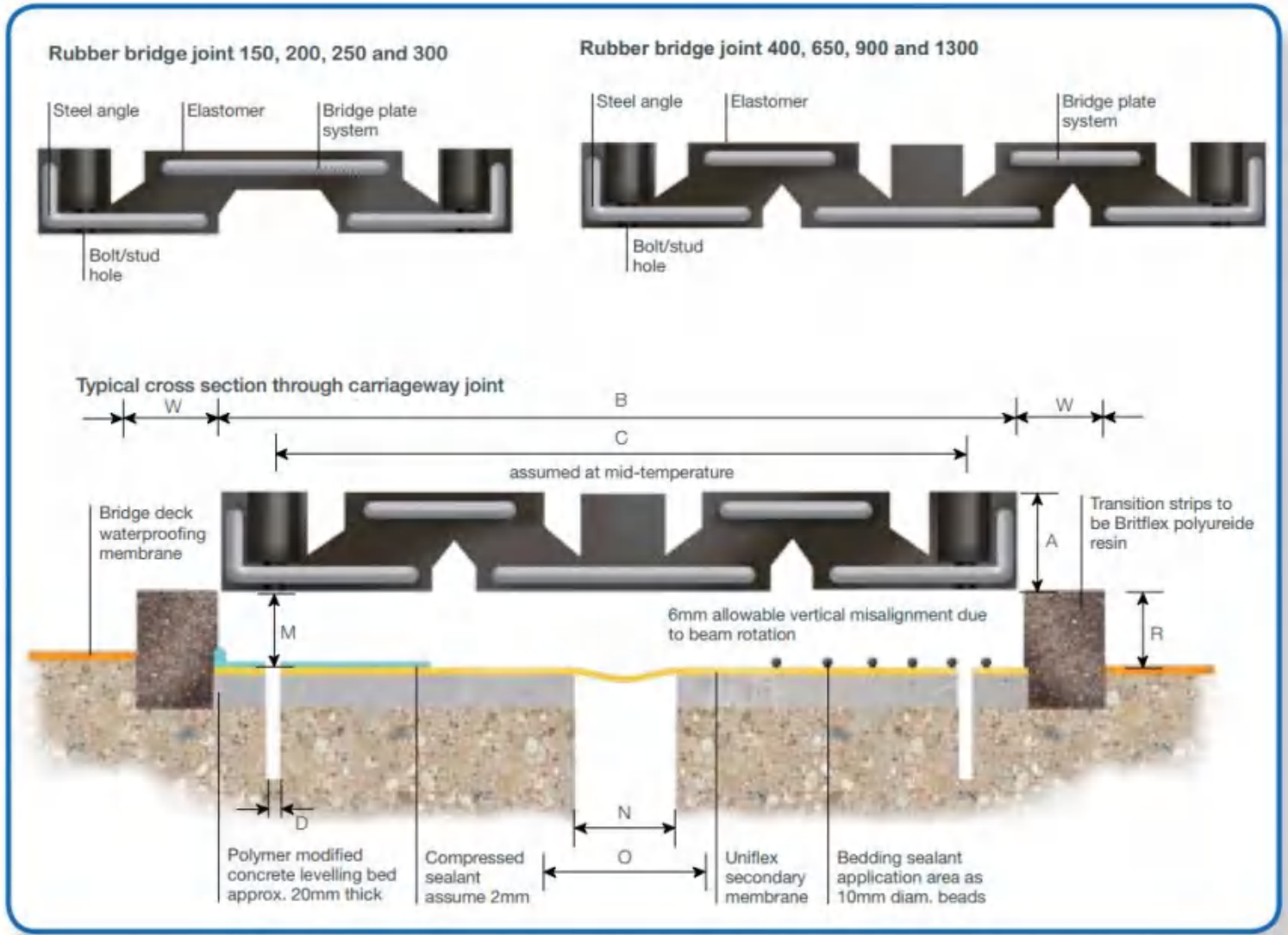
Rubber Cap
(Natural Rubber)



Nut & Bolt
(Grade 8.8 Zinc coated)



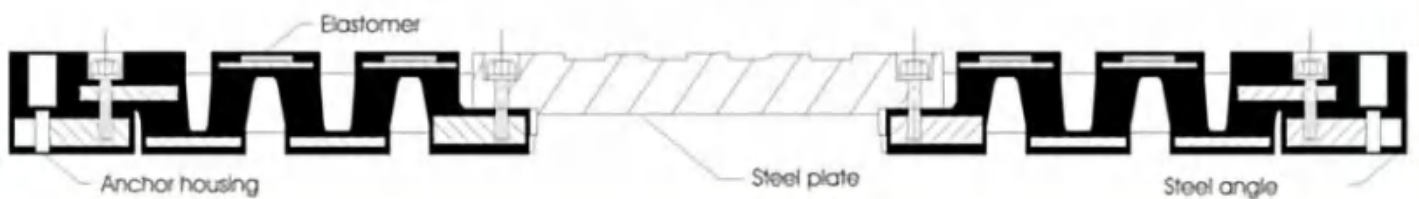
Clipped Washer
(Grade 8.8 Zinc coated)



Transflex Asimétrica 1600 and 2400:



Transflex 1600 and 2400:



HENGSHUI JINGTONG RUBBER CO., LTD – TDS

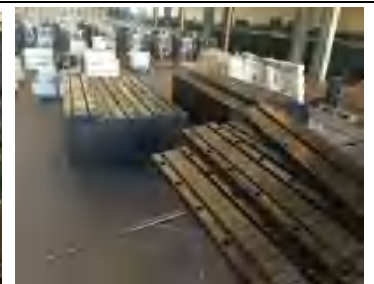
| Models | Movement | Length | Depth | Width | Weight | Stud diam. |
|---------------|-----------------|---------------|--------------|--------------|---------------|-------------------|
| | | L | A | B | | C |
| 150 | 50 mm | 1750mm | 35mm | 240mm | 25 Kg | 12 mm |
| 170 | 70 mm | 2000 mm | 35 mm | 272 mm | 42 Kg | 14mm |
| 200 | 80 mm | 1830mm | 40mm | 274mm | 45 Kg | 16 mm |
| 220 | 90 mm | 2000 mm | 32 mm | 290 mm | 44 Kg | 16mm |
| 250 | 110 mm | 1830mm | 46mm | 356mm | 62 Kg | 16 mm |
| 270 | 120 mm | 2000 mm | 55 mm | 390mm | 90 Kg | 16mm |
| 300 | 160 mm | 1830mm | 54mm | 432mm | 88 Kg | 16 mm |
| 350 | 100 mm | 1830mm | 66mm | 470mm | 120 Kg | 16 mm |
| 400 | 102 mm | 1830mm | 54mm | 590mm | 150 Kg | 16 mm |
| 650 | 165 mm | 1830mm | 75mm | 724mm | 260 Kg | 20 mm |
| 800 | 270 mm | 1830 mm | 73 mm | 888 mm | 258 Kg | 24mm |
| 900 | 270 mm | 1830mm | 93mm | 890mm | 375 Kg | 24 mm |
| 1000 | 330 mm | 1250 mm | 110 mm | 1115 mm | 330 Kg | 24mm |
| 1300 | 380 mm | 1220mm | 127mm | 1202mm | 438 Kg | 24 mm |

Any types can produce. Special drawing can be acceptable!

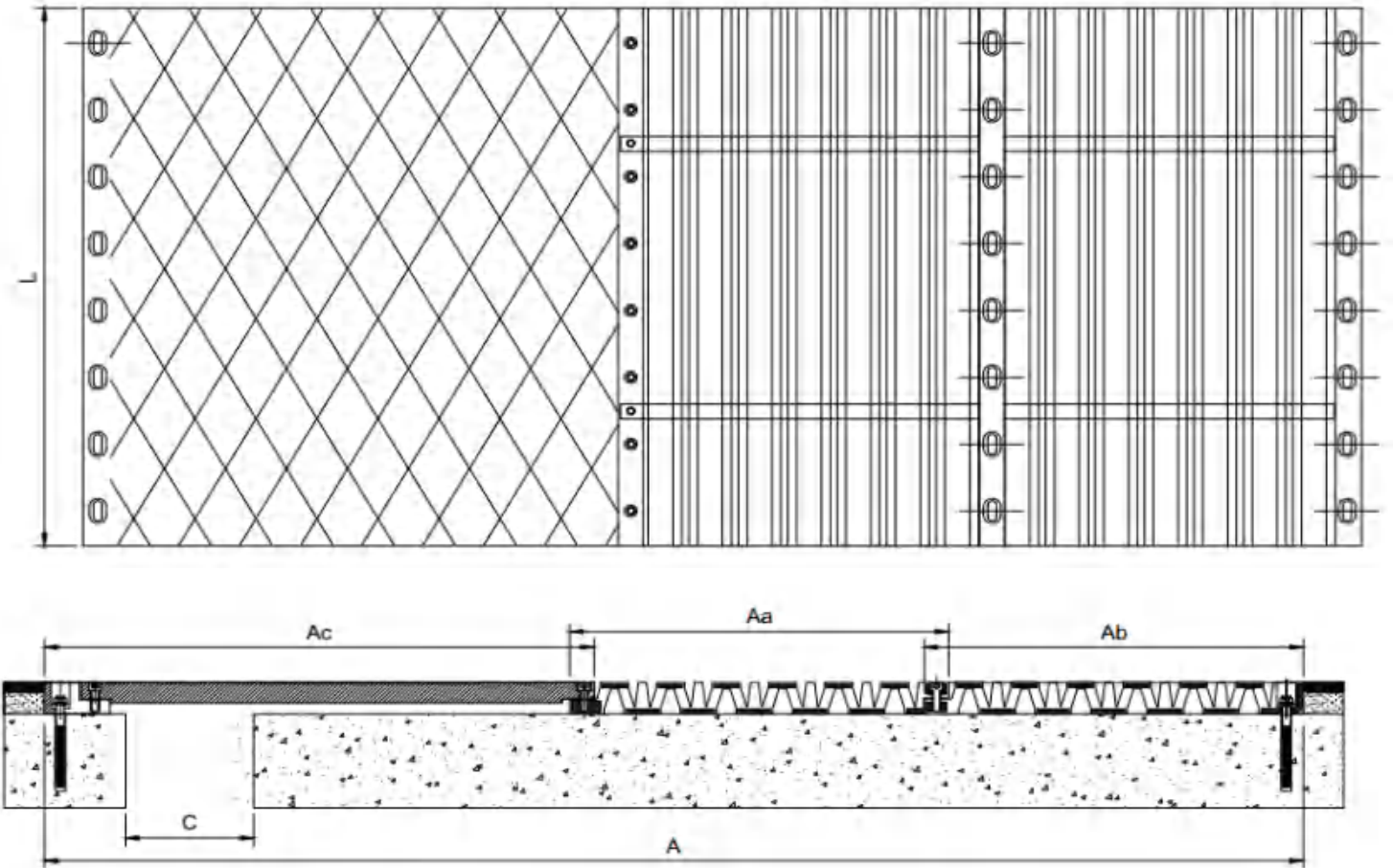
Molds in workshop that can produce directly as below:

| | | | | | | |
|-------|--------|---------|-------|---------|--------|------|
| 155 | 50 mm | 2000 mm | 40 mm | 256 mm | 56 Kg | 16mm |
| 200 | 80 mm | 2000 mm | 45 mm | 274 mm | 70 Kg | 16mm |
| 250 | 110 mm | 1200 mm | 50 mm | 356 mm | 38 Kg | 16mm |
| 270 | 120 mm | 2000 mm | 55 mm | 390 mm | 110 Kg | 16mm |
| 290 | 160 mm | 1200 mm | 54 mm | 430 mm | 59 Kg | 16mm |
| 300 | 160 mm | 2000 mm | 54 mm | 432 mm | 100 Kg | 20mm |
| 370 | 100 mm | 1000 mm | 54 mm | 550 mm | 64 Kg | 20mm |
| 1300 | 380 mm | 1830 mm | 96 mm | 1202 mm | 450 Kg | 24mm |
| 2800S | 600 mm | 1614mm | 85mm | 1095mm | 390 Kg | 24mm |

Still updating.....



▶ Other rubber expansion joints produced



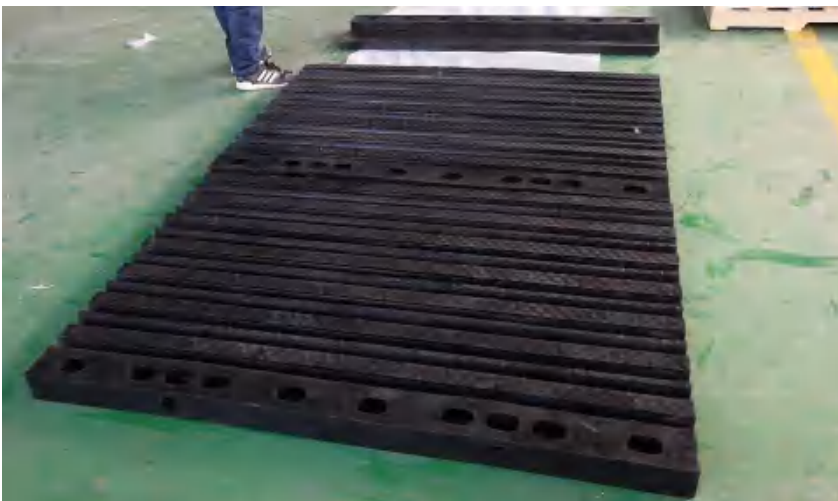
- 1600S: Long($\pm 175\text{mm}$); Transv ($\pm 100\text{mm}$)



- 2000S: Long($\pm 225\text{mm}$); Transv ($\pm 142\text{mm}$)



- 2400S: Long($\pm 225\text{mm}$); Transv ($\pm 142\text{mm}$)



1. Revetment sawing



2. Recess clearing



3. Levelling



4. Drilling



5. Elements installation



6. Finishing



Quality Guarantee

JINGTONG Elastomeric Expansion Joints have a Quality Guarantee 2 years from date of manufacture if kept in a dry and suitable store in the original packages. If stored at high temperatures and/or high humidity conditions the shelf life may be reduced to 6-12 months.

Hazards identification

Physical state: Solid

Odor: Light Raw material smell

Potential acute health effects:

Eyes/ Skin : May cause eye irritation. (redness).

Heated material can cause thermal burns resulting in pain, redness, blistering.

Ingestion : There is no known acute effect after over-exposure to this product.

No known significant effects or critical hazards. Avoid prolonged contact with eyes, skin and clothing.

Mark, Package, Transportation, Storage

1. Mark, Label

All packages should be marked with the following contents: product name, specifications and models, net quality, manufacturer name, site, date of production, implementation standards, etc.

2. Package, Transportation, Storage

✓ **Safety:**

This product is non-flammable and non-explosive. It can be transported, stored and stored according to general non-dangerous goods.

✓ **Transportation:**

During transportation and storage, sunshine and rain must be prevented, access to heat sources must be prohibited, and collision and extrusion must be prevented.

Delivery forms:

JINGTONG Elastomeric Expansion Joints are supplied ready-made in the shape and dimensions required for each project. Washers, Bolts, rubber caps etc. can be provided.

✓ **Storage:**

Storage should be stored in an adequate place, cool, dry and ventilated warehouse, raised from the ground, and in such a way as to be protected from shock, dust, humidity and direct sunlight When expansion joints are not directly installed upon supply from the date of production.



HENGSHUI JINGTONG RUBBER CO., LTD

衡水京通工程橡胶有限公司

Phone Number: +86-15731809416 / +86-18230181118

Tel/Fax: +86-318-5227227

VAT: 911311060657106281

Office: Room 1202,Huizhong square, Taocheng district, Hengshui City,053000, Hebei Province, China.

Factory: NanWangZhuang Village, Pengdu Town, BinHu District, HengShui city,053000, China.

Email: tradingNancy@outlook.com / jingtong_nancy@jingtongchina.net

Website: www.jingtongchina.net

Waterproof series: www.jointwaterstop.com

Bearing Series: www.bearing-pad.com

Bridge joints Series: www.bridgejoints.com

