

### SPECIFICATION

**A: MATERIAL:**

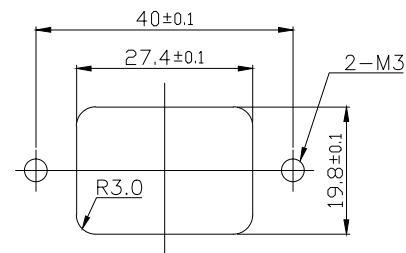
- 1.HOUSING: INLET:PBT / COVET:PVC UL 94V-0
- 2.TERMINAL: COPPER ALLOY,TIN PLATED

**B: CHARACTERISTICS:**

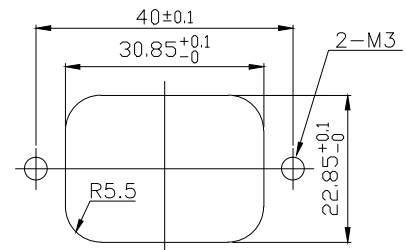
- 1.RATING: 15A 250V~ UL,CUL  
10A 250V~ ENEC & CCC
- 2.INSULATION RESISTANCE : 100MW MIN, AT 500V DC
- 3.ELECTRIC STRENGTH : AC 2,000V FOR ONE MINUTE

**C:APPROVALS:**

UL, CUL, ENEC & CCC



FOR FRONT MOUNTING USE  
PANEL CUT-OUT



FOR REAR MOUNTING USE  
PANEL CUT-OUT

E			
D			
C			
B			
A	2024.03.26	RELEASE	NEW REVISION
REV	DATE	DOCUMENT	DESCRIPTION

		PART NO.:	0707-1-CW1-C-UBK	NAME:	AC INLET 3P SOCKET
		MATERIAL:	SEE AVOBE	SPEC.:	IEC 60320-1,C14
		APPROVED	CHECKED	DESIGNER	NOTE:
		UNIT	SCALE	SHEET	JOB NO.:
		mm	1 : 1	1 of 1	S707-20XX

TOLERANCE UNLESS OTHERWISE MARKED  
DIMENSION: .000 : ±0.1  
.00 : ±0.2  
.0 : ±0.3  
ANGULAR: ±3°