

**2400-2500 MHz 180° H-POL**
**Model:PS2400-14-180H**
**Electrical Data**

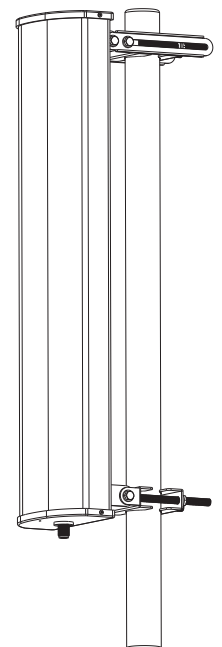
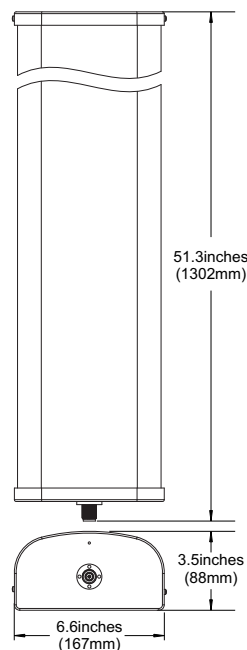
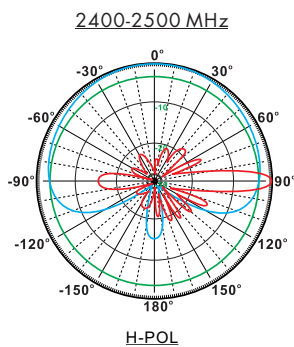
Frequency:	2400-2500 MHz
Gain:	14 dBi
VSWR:	<1.5:1
Polarization:	Horizontal
Horizontal Beamwidth :	180°
Vertical Beamwidth:	7.2°
Nominal Impedance:	50 Ohms
F/B Ratio:	>15 dB
Max Input Power:	100 W

**Mechanical Data**

Connector :	N Female
Dimensions:	1302*167*88mm
length*width*height	51.3*6.6*3.5in
Weight:	4.3kg/9.5lb
Radome Material:	UV Resistance PVC
Mounting Method:	Mast
Mast Size:	Ø40-Ø70mm
Rated Wind Velocity:	210km/h
Operating temperature:	-40~+65°C

**Shipment Data**

Packing Qty:	1pc/Carton
Carton Size:	1335*210*200mm
(length*width*height)	52.6*8.3*7.9in
Packing Weight:	4.9kg/10.8lb



Installation Guide

Model:PS2400-14-180H

