



1、Product introduction-OLEQ5 SERIES

- Housing for the lamp is made of high quality die-casting aluminum ; Surface electrostatic spraying treatment with good weathering resistance and high reliability ; Smooth surface design have excellent heat dissipation and reduce the wind resistance.
- Light distribution: use standard TYPE II - M lens, the transmittance reach up to 93%.
- Easy to install.
- Environmental Protection: All materials of lamps are lead-free and mercury-free;No harmful radiation to human health such as ultraviolet ray and infrared ray;No light pollution to the surrounding environment.

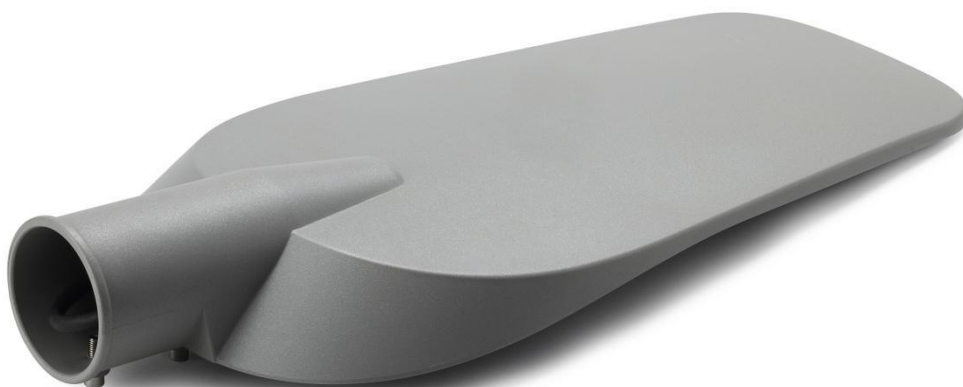
This series of lights is widely use in side walk, residential district, manufacturing district, plaza, park, school, villa, garden, tunnel and the bottom of the bridge,and so on.

2、Product Series

No.	Model	LED Chips	Power	Dimension(mm)
1	OLEQ520	32	20W	346*152*68
2	OLEQ530	46	30W	
3	OLEQ545	52	45W	
4	OLEQ560	87	60W	436*189*68
5	OLEQ575	94	75W	
6	OLEQ510	140	100W	534*229*78
7	OLEQ512	149	120W	

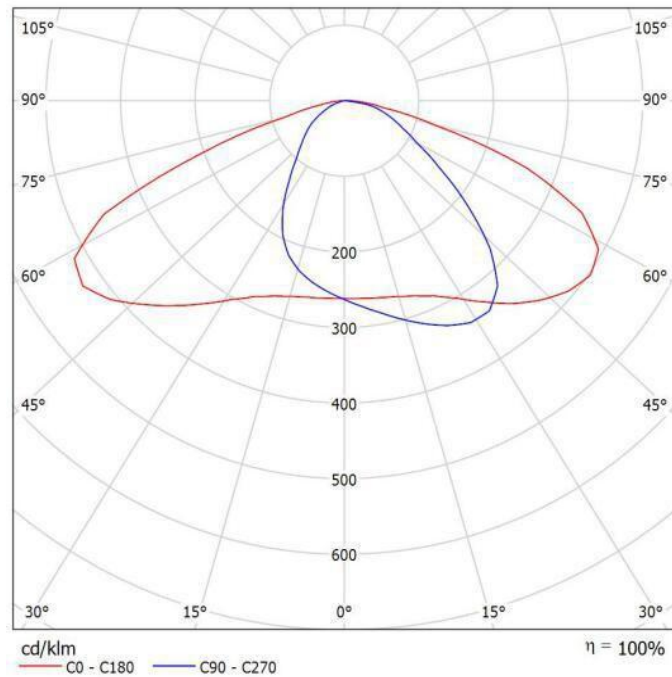
3、Technical Parameters

No.	Item	Nominal Value
1	Input Voltage	AC180-265V
2	Operating Frequency	50/60Hz
3	Power Factor	>0.9
4	CCT	2700K/3000K/4000K/5000K/6500K Optional
5	Luminous Efficiency	100lm/W
6	Ra	>70
7	Beam angel	150° (Maximum)
8	Light source	LED 2835
9	Protection Grade	IP65
10	Operating Ambient Temperature	-40℃ -+55℃
11	Storage Temperature	-45℃ -+60℃
12	Intelligent Control	/
13	LED Life Time	30000H
14	hole Size	Φ50 / Φ60
15	Housing Material	ADC #12
16	Housing Colour	Light Grey



4、Light distribution Curve

TYPE II-M

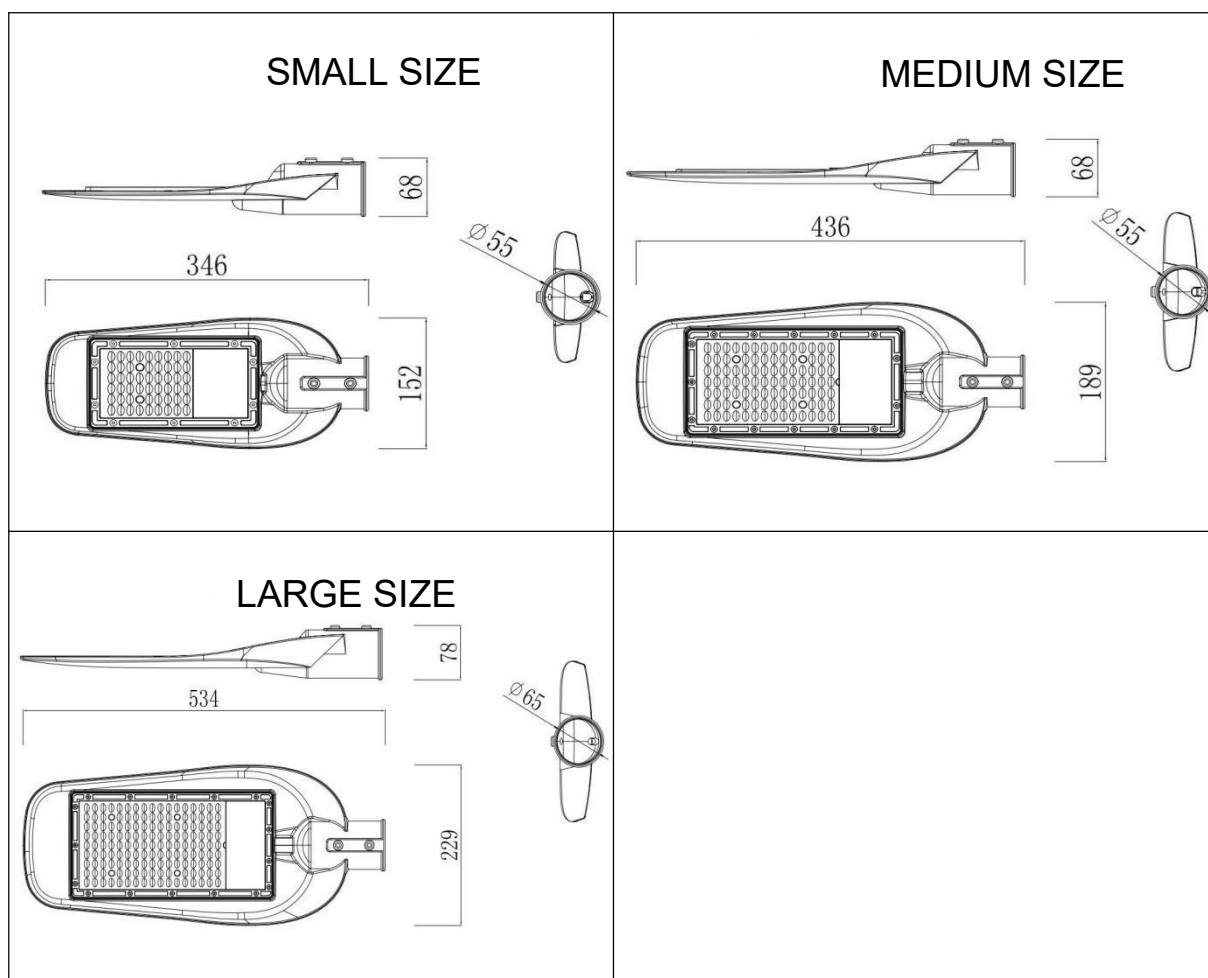


Remark: this light distribution Curve is for reference only, the parameters will be slightly different depend on the specification.

5、 Safety Performance

Operating Ambient Temperature	-40℃-+55℃
Storage Temperature	-45℃-+60℃
Dielectric Strength	1500VAC/10mA
Insulation Resistance	≥10MΩ 500VDC
Leakage Current	< 1mA @220VAC
Ground Resistance	<0.1Ω, 10A
Surge Protection	In 25℃±10℃ Temperature, L-N 5KV , LN-PE 2.5KV. (maximum)

6、 Dimension



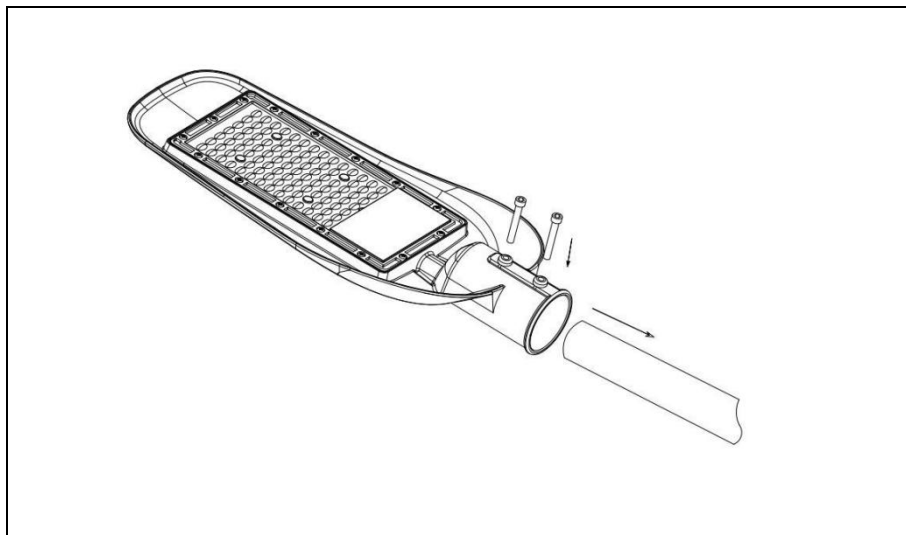
7、Packaging

Model	carton size (mm)	N.W. (kg)	G.W. (kg)
OLEQ520	480*365*355	12.96	15.5
OLEQ530		12.96	15.5
OLEQ545		12.96	15.5
OLEQ560	580*445*355	19.44	21.29
OLEQ575		19.44	21.29
OLEQ510	550*490*225	12.08	15.18
OLEQ512		12.11	15.2
remark: weight tolerance range ≤1kg			

8、 Install & Maintain

Installation Instructions:

- 1、 Mount lamp to the pole horizontally,suitable for $\phi 50/\phi 60\text{mm}$.
- 2、 Connect the wires.
- 3、 Adjust the lamp to horizontal after mounted,then locking the M8 hexagon socket head screw to fix the lamp on the pole.
- 4、 Turn on the power,check if the lamp is working normally or not.



Maintain Instructions:

- 1、 Power off firstly,then use screw driver to remove the M8 hexagon socket head screw and replace it.



9、Note For Use



Before using the product, please be sure to read the following notes carefully:

1. Warranty: 3 Years.
2. Open the package, check the product carefully and handle gently.
3. If product have any damage, please reserve the package and contact with our company in time.
4. Please do not try to use the damaged product.
5. Please use a power source within the indicated range to ensure that the product works normally.
6. Please follow the correct installation steps to install the product; and do not touch the light when it is working.
7. Please make sure the lamp is well grounded before installing.
8. In any case, the light can not be covered by thermal insulation blanket or something like similar material.
9. Please turn off the power (Disconnect both the L line and the N line) to keep you away from getting an electric shock when installing and removing.
10. Do not look at the LED light for a long time. High intensity light may cause eye damage.
11. Light shall be installed and maintained by a professional electrician.