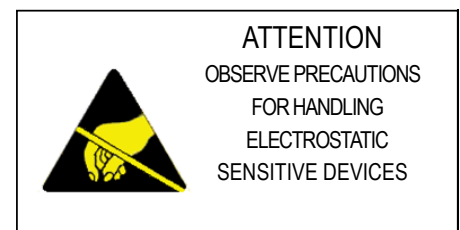
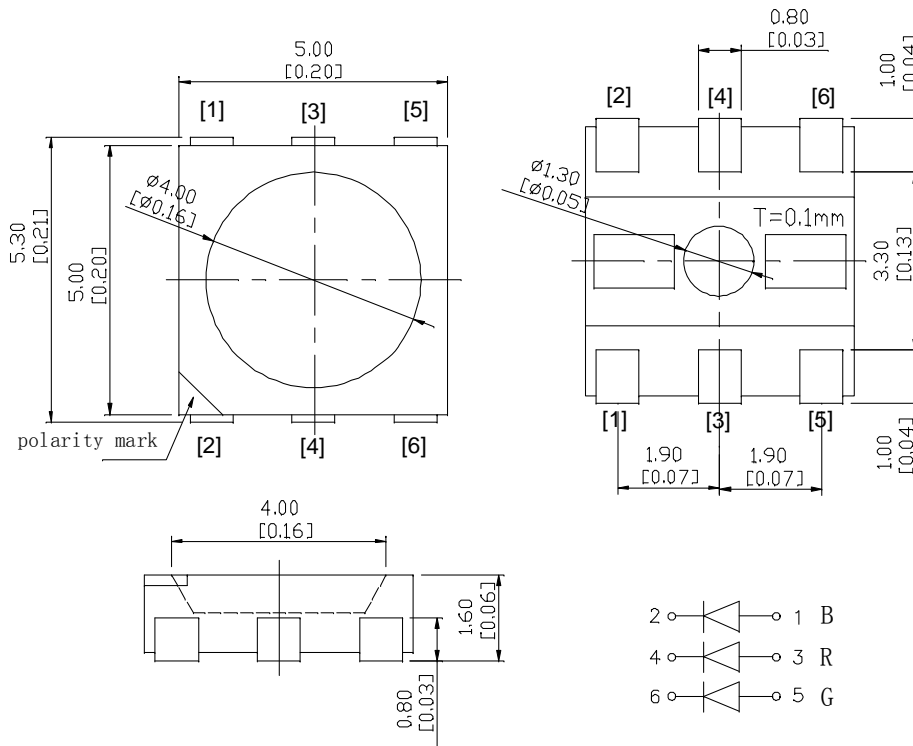


Feature

- ◆ Viewing angle: 120 deg
- ◆ The materials of the LED dice is InGaN, InGaP and AlGaInP
- ◆ 5.30mm×5.00mm×1.60mm
- ◆ RoHS compliant lead-free soldering compatible

Package Outline



NOTES:

1. All dimensions are in millimeters (inches);
2. Tolerances are ± 0.3 mm (0.012inch) unless otherwise noted.

Absolute maximum ratings at Ta=25°C

Parameter	Symbol	Value	Unit
Forward current per chip	If	30	mA
Reverse voltage	Vr	5	V
Operating temperature range	Top	-20 ~+85	°C
Storage temperature range	Tstg	-35 ~+85	°C
Pulse Forward Current	Ifp	100	mA
Electrostatic Discharge	ESD	1000(HBM)	V

Electro-optical characteristics at Ta=25°C

Parameter	Test Condition	Symbol	Value			Unit	
			Min.	Typ.	Max.		
Forward voltage	If=60mA	Vf	R	1.8	--	2.4	V
			G	2.8	--	3.4	V
			B	2.8	--	3.4	V
Dominant wavelength	If=60mA	λ_d	R	620	--	630	nm
			G	520	--	530	nm
			B	465	--	475	nm
Luminous intensity	If=60mA	Iv		1150	--	1450	mcd
				1450	--	1700	mcd
Viewing angle at 50% Iv	If=60mA	2 θ 1/2	--	120	--	Deg	
Reverse current	Vr=5V	Ir	--	--	10	μ A	

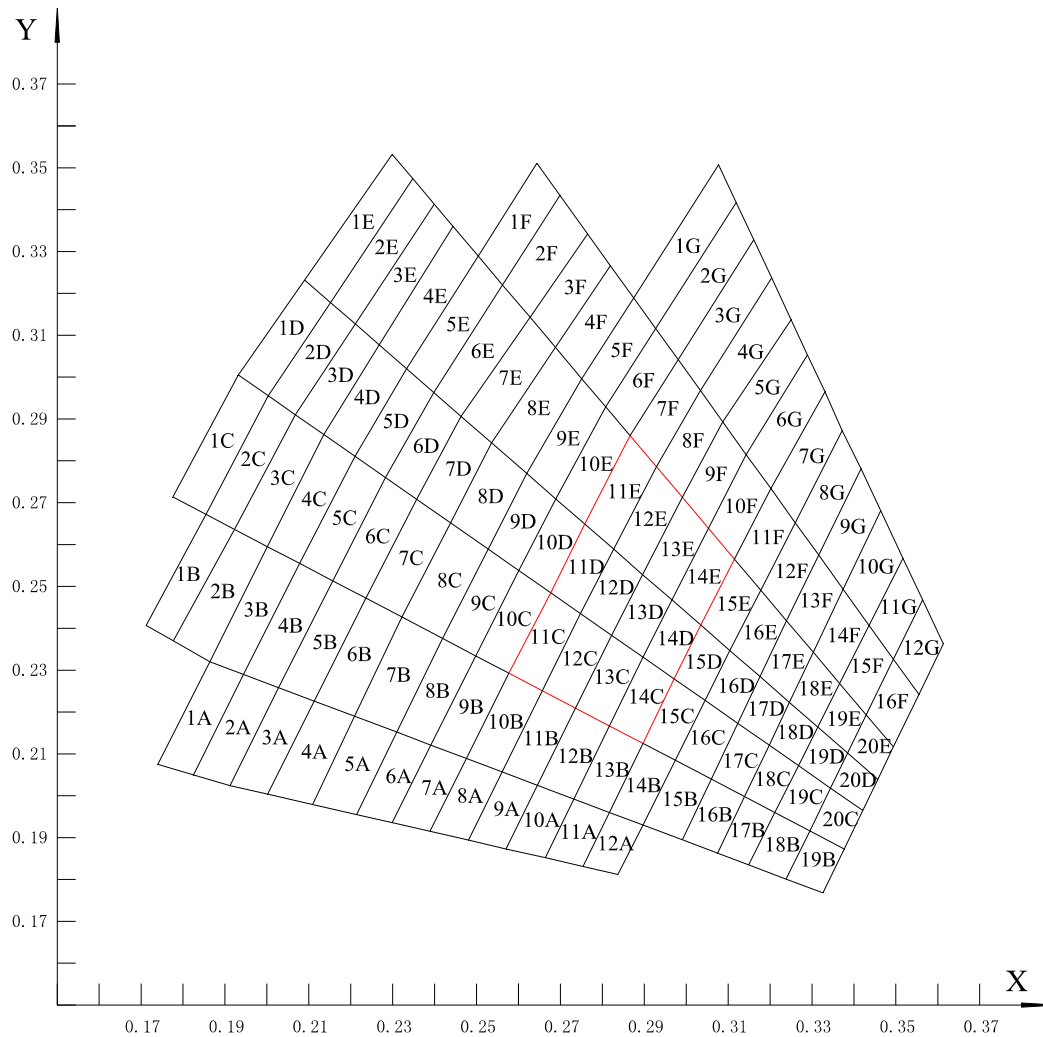
NOTE: (Tolerance: Iv \pm 10%, λ_d \pm 2nm, Vf \pm 0.05V, X, Y \pm 0.005)

IFP Conditions: Pulse Width \leq 10msec. and Duty \leq 1/10.

VF BIN:

BIN CODE	MIN	MAX	BIN CODE	MIN	MAX
B0	1.8	2.0	B1	1.8	1.9
			B2	1.9	2.0
C0	2.0	2.2	C1	2.0	2.1
			C2	2.1	2.2
D0	2.2	2.4	D1	2.2	2.3
			D2	2.3	2.4
E0	2.4	2.6	E1	2.4	2.5
			E2	2.5	2.6
F0	2.6	2.8	F1	2.6	2.7
			F2	2.7	2.8
G0	2.8	3.0	G1	2.8	2.9
			G2	2.9	3.0
H0	3.0	3.2	H1	3.0	3.1
			H2	3.1	3.2
I0	3.2	3.4	I1	3.2	3.3
			I2	3.3	3.4

Chromaticity Bin



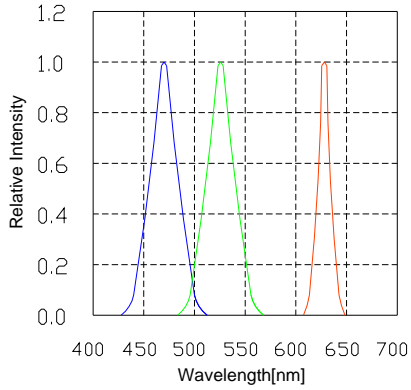
Bin data:

BIN CODE	CIE-X1	CIE-Y1	CIE-X2	CIE-Y2	CIE-X3	CIE-Y3	CIE-X4	CIE-Y4
11C	0.2657	0.2251	0.2577	0.2293	0.2677	0.2485	0.2748	0.2435
12C	0.2736	0.2209	0.2657	0.2251	0.2748	0.2435	0.2822	0.2383
13C	0.2817	0.2167	0.2736	0.2209	0.2822	0.2383	0.2897	0.2331
14C	0.2897	0.2125	0.2817	0.2167	0.2897	0.2331	0.2971	0.2279
11D	0.2748	0.2435	0.2677	0.2485	0.2758	0.2649	0.2827	0.2589
12D	0.2822	0.2383	0.2748	0.2435	0.2827	0.2589	0.2896	0.2528
13D	0.2897	0.2331	0.2822	0.2383	0.2896	0.2528	0.2966	0.2468
14D	0.2971	0.2279	0.2897	0.2331	0.2966	0.2468	0.3035	0.2408
11E	0.2827	0.2589	0.2758	0.2649	0.2866	0.2860	0.2929	0.2786
12E	0.2896	0.2528	0.2827	0.2589	0.2929	0.2786	0.2991	0.2713
13E	0.2966	0.2468	0.2896	0.2528	0.2991	0.2713	0.3053	0.2639
14E	0.3035	0.2408	0.2966	0.2468	0.3053	0.2639	0.3115	0.2565

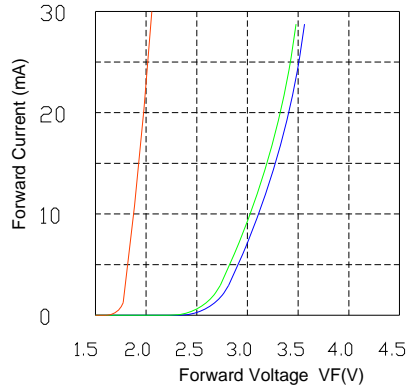
Typical optical characteristics curves

Spectral Distribution

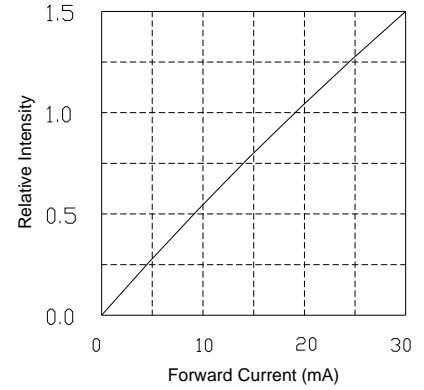
Relative Intensity vs. Wavelength (Ta=25°C)



Forward Current vs. Forward Voltage (Ta=25°C)

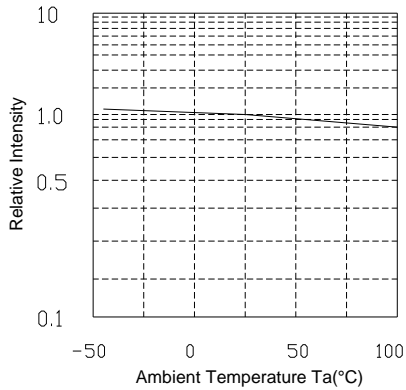


Relative Intensity vs. Forward Current (Ta=25°C)

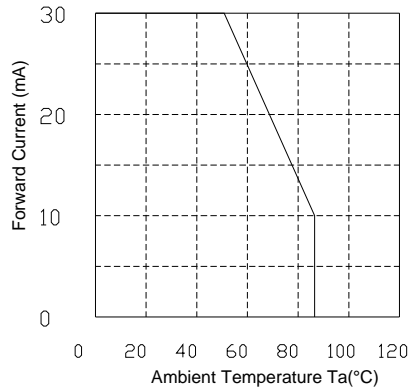


Derating

Relative Intensity vs. Ambient Temperature



Maximum Forward Current vs. Ambient Temperature



Forward Current vs. Dominate wavelength (Ta=25°C)

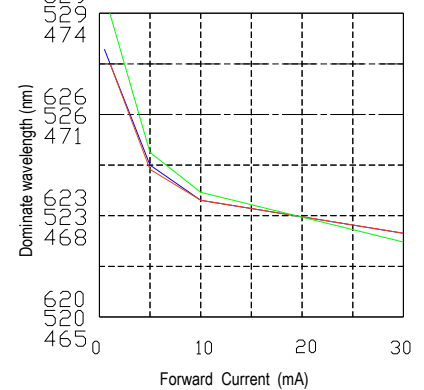


Diagram characteristics of radiation

